

The Window

World of Wonder

Shelly Sender reflects on 15 years of change at the Early Childhood Education Center

Esther's Moment

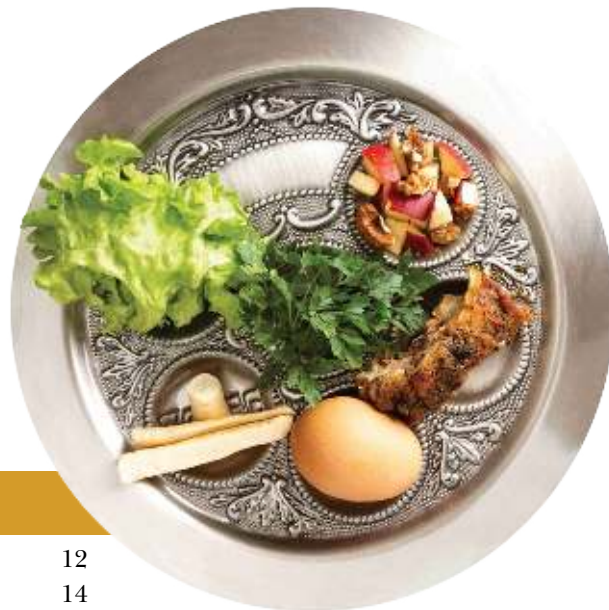
150th Annual Meeting
& Board Nominees

Heart to Table
at Passover

Meet the TE150
Celebrations Chairs



CONTENTS



PRAYER AND SPIRITUALITY

A Message from Rabbi David Stern	3
In the Torah	4
Rabbi Daniel Utley: Six Wonderful Years	5
Dangerous Religious Ideas: A Debrief with Rabbi Rachel Mikva	6

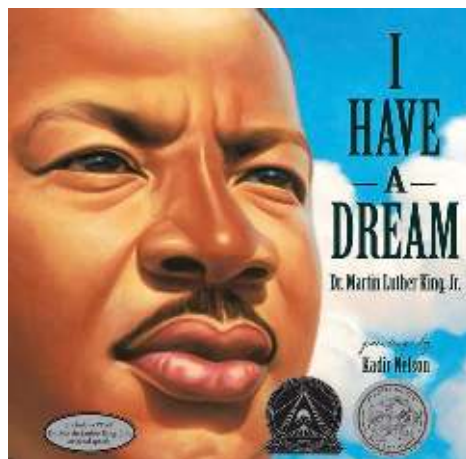


COMMUNITY

Celebration and Remembrance	12
All About Alexes	14
150th Annual Meeting and Board Elections April 6	15
Passover 5782	16
Nefesh Mountain Returns!	17

LEARNING

Freedom of Choice at YL+E	7
Fifteen Years at ECEC: A look back	8
A Place to Belong for William	10
Tribe Vibe: Passover	11



ISRAEL

Learning with Rabbi Philip Nadel and Congregation YOZMA	20
Two Trips in June: Sign Up Now!	20

THE FUTURE

Contributions	21
TE150 Celebrations Chairs bring decades of Temple commitment to their exciting new roles	24
Moms with a Mission for Annual Fund	27

JUSTICE

Five Books for Children	18
Interfaith Listening Campaign	19



**Temple
Emanu-El**

Founded in 1872
8500 Hillcrest Road | Dallas, Texas 75225
214.706.0000 | tedallas.org

Temple President
Beth Gold

Executive Director
Meredith J. Fried

Clergy
Rabbi David Stern
Rabbi Debra J. Robbins
Rabbi Kimberly Herzog Cohen
Rabbi Daniel Utley
Cantor Vicky Glikin
Cantor Leslie Niren

**Department of
Congregational Advancement**
Sandy Diamond, *Senior Director*

**Department of Education
& Engagement**
Rabbi Amy Rossel,
Senior Director

The Window
Connie Dufner, *Senior Director
of Communications*
Ann Wilson, *Graphic Designer*

A Truth-to-Power Moment for Esther — and All of Us

Esther had every reason to stay out of it. She was Queen of Persia, with all the attendant power and privilege. But she also knew, thanks to Vashti, that her favored status was tenuous, easily revocable upon the whim of King Ahashuerus. So when Mordechai asked her to intervene with the king to halt the planned destruction of the Jews of Shushan, Esther's first response is to decline: after all, to enter the king's inner court without having been summoned first was a capital crime. Who can blame her: better to play it safe amidst her embroidered pillows and fine perfumes.

But Mordechai pushes back: "Do not imagine that you, of all the Jews, will escape with your life by being in the king's palace." Then he adds the decisive question: "*U'mi yodea* — And who knows, perhaps you have attained to royal position for just such a crisis." And then Esther's second response: motivated by that question, and revealing the essence of courage, Esther risks her life to speak to the king about the threat to her people.

The Book of Esther is a lot of things: low comedy, bawdy burlesque, improbable political satire, the basis for all our welcome Purim silliness, and a strikingly accurate psychological portrayal of antisemitism. But it's also about moral courage. It's about that haunting prod

from Mordechai in Esther 4:14: "And who knows," and the lesson of Esther's two responses.

There is nothing in the story until the moment of Esther's courageous decision that would have predicted it. It was true in the palace of Persia, and it is true for us. Everything tips us towards inertia in the face of injustice: We don't know all the facts, people offer conflicting perspectives, my deeds won't make a difference, I don't have the bandwidth, why this issue over others, it's complicated, I'm overwhelmed. I do not place any judgement on those statements — at one time or another every social justice hero I know has made them.

Made them, and then moved past them. Because that is how we give Esther her due: to hear Mordechai's question as a challenge to us amidst our own comforts, and to brave the path to Esther's example.

When we look at the struggles of the hungry; the systemic obstacles poor people face to accessing health care and legal systems; the plight of Afghan refugees; the stubborn blight of sexism and racism; and the easy spread of fatal hatred towards Jews, Muslims and so many others; we might well understand Esther's first answer: "It's too much, it's futile, it's not worth the risk." But to honor Esther is not to stop there, and



Rabbi David Stern

instead to emulate what she does next: to speak truth to power, and move power to confront suffering. Yes, to sometimes feel frustration and inadequacy, but not to give them the last word. In the words of Jewish human rights activist Ruth Messinger: "Despair is not a strategy — we cannot retreat to the convenience of being overwhelmed."

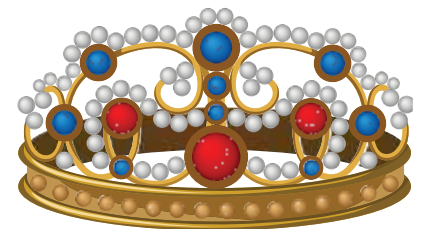
It's easy to stay quiet as white nationalism spreads its toxic messages of antisemitism and racism. It's easy to stay quiet as the refugees are turned away. It's easy to convince ourselves that the playing field is level, that all of my prerogatives have been earned and deserve to remain undisturbed. It's our first response, just as it was Esther's. But the Purim story wouldn't be worth much if it stopped there. And neither is ours.

continued on page 4

IT'S GOOD TO BE QUEEN

Curious about Queen Esther? Learn more of her story as well as modern Jewish history with this reading list compiled by Anjelica Ruiz, Director of Libraries and Archives. All of the books are available to check out from Temple by contacting Anjelica at aruiz@tedallas.org.

- The Seventh Handmaiden, by Judith Pransky
- The Girl from the Garden, by Parnaz Fortouan
- Man of My Time, by Dalia Sofer
- My Iran: Memories, Mysteries & Myths, by Isaac Yomtovian
- Concealed: Memoir of a Jewish-Iranian Daughter Caught Between the Chador and America, by Esther Amini
- Esther's Children : A Portrait of Iranian Jews, by Houman Sarshar
- Queen Esther: Star in Judea's Crown — A Dramatic Retelling of the Book of Esther, by Laura Long





In the Torah

Exodus concludes the first Shabbat of March with a biblical punch list of instructions to complete the mishkan, the movable sanctuary of the Jewish people. Leviticus arrives with its rituals and practices to bring order in a portable world.

Tightly closed buds open to profusion of blooms and trees burst into a blaze of green. In Jewish time, along comes Purim joy and triumph over persecution and the archetypal, up-from-slavery Passover story.

We move from Purim revelry to the strength and blessing of community in the Healing Service on March 18, an anchor, like Leviticus, in a world that can sometimes feel unstable.

We'll welcome Rabbi Philip Nadel of Congregation Yozma in Modi'in, Israel on March 26 and honor Temple's leadership during Board Installation Shabbat on April 8. At Passover, this year's theme of "heart to table" embodies Temple's legacy of letting all who are hungry find nourishment. And, we move from somber to joyous again at Yom HaZikaron and Yom HaAtzmaut.

Whether it's a complex legal tangle in the Torah, a tumultuous Texas spring storm, a photo op in a glorious patch of wildflowers, or a longed-for settling in your heart, may all your journeys bring blessing.

Weekly Torah Readings March/April 2022

All services are archived at live.tedallas.org.

March 4-5: P'kudei, Exodus 38:21-40:38

March 11-12: Shabbat Zachor (the second of five special Shabbatot before Pesach), Vayikra, Leviticus 1:1-5:26

March 18-19: Tzav, Leviticus 6:1-8:36

March 25-26: Shabbat Parah (the third of five special Shabbatot before Pesach), Sh'mini, Leviticus 9:1-11:47

April 1-2: Tazria, Leviticus 12:1-13:59

April 8-9: Shabbat HaGadol (the last of five special Shabbatot before Pesach), M'tzora, Leviticus 14:1-15:33

April 15-16: Pesach First Day, Exodus 12:21-12:51

April 22-23: Pesach VIII, Deuteronomy 14:22-16:17, Numbers 28:19-25

April 29-30: Acharei Mot, Leviticus 17:1-18:30

ADULTS-ONLY CELEBRATION

Wednesday, March 16 | 7PM | In person at Temple
Break out those 90s costumes and come party at Temple with drinks, snacks, music, and a Megillah reading complete with a mini-spiel written by our young adults!

Cost: \$18/person

Register: participate.tedallas.org/purimparty

Clergy message continued

Rabbi Aryeh Cohen describes the moment we move from critique to action as the *hineni* moment, when, like Esther, we not only declare what's wrong, but we declare ourselves. To paraphrase Rabbi Cohen's teaching, "The *hineni* moment is the move from "Wow, this is terrible, somebody should do something," to "I am one of the people who have to do something."

"The hineni moment is the move from 'Wow, this is terrible, somebody should do something,' to 'I am one of the people who have to do something.'"

It is the something that Magda Trocme, the Christian wife of a Christian pastor, did in southern France in 1940 when she first opened her door to a Jewish woman in need and began an organized effort that saved over 2,000 French Jewish lives during the Shoah. It is the something that Laymah Gbowee did in Liberia in 2002 when she began to organize thousands of women to create a peace movement that helped to end the Liberian civil war. It is the something that Golda Meir did when she led the State of Israel through perilous circumstances day after day.

We will all have our own something. The something could be making a donation, or attending a meeting, or clicking on a petition, or showing up in an elected official's office to advocate, or joining with others in organized concern: to fight for Jewish freedoms, for women's freedoms, for voting rights, for civil rights.

Rabbi Cohen calls it a *hineni* moment. We might call it the Esther moment, and the honor she deserves.



A Fond Farewell from Rabbi Daniel Utley

'Thank you for inviting us to grow with you.'

During our first year in Dallas, I quickly learned that Texas summer is incredibly hot. The leaves fall during winter (not fall!) and spring arrives in March practically before you blink. I've followed the progress of our family's life here through the changes in our majestic red oak tree in the center of our back yard: new buds in February, the drying leaves in August, and the lighter tones that appear in the bark in December as the trunk expands. Its steady presence reminds me that time and growth move ever forward.

Over the past six years, we've all grown: Our family of three became a family of five; relationships and connections have developed and intertwined; our Temple community and staff have created new programs, re-engaged our young people, welcomed new members, grown through diversity, and met challenges with deeper intention. And I've matured into a rabbi through your support, care and confidence in me. I will carry that with me as I embark on an exciting new chapter as Director of Mandel JCC's Camp Wise in Cleveland.

I am ever grateful for having had the opportunity to begin my rabbinate here in Dallas. Each day presents an opportunity for profound learning and joyful meaning while working alongside the unparalleled team of clergy, staff, and lay leadership at Temple. The roots of our work together represent a relationship committed to mutual growth. I've become a better teacher, preacher, caregiver and steward of this congregation by experiencing the Torah we've shared: our conversations, debates, and quest to understand Jewish text, but more importantly, our study of life. We'll never forget how the Temple family embraced



Rabbi Daniel Utley and Cohen Preble.

us as we welcomed new babies and weathered the pandemic's challenges. Our community has also become fertile ground for Rachel's creative innovations as a Jewish educator for families and as an organizer of ideas and spaces.

Life has changed and we have changed over six years. Kids run through Temple's hallways who once peered out at me from their infant carrier as we approached the open ark for a naming blessing. High school graduates whose b'nai mitzvah I had the honor of supporting will head to college this fall. Each Shabbat, as we remember loved ones, the sacred names we read now represent stories and memories for me as well. We've listened to each other, cried together, and sometimes just sat still in silent presence, holding the reality of our troubled world.

We've transformed our pathways to congregational prayer and connection through the challenges of the pandemic and arrived at the spring of 2022 with far greater tools at our disposal than we ever could have imagined. Each of these moments represents the result of steady dedication, learning, mentorship and openness to what lies ahead.

As Rachel, Eitan, Judah, Benji and I move to Cleveland at the end of May, we take so much with us in the form of memories, laughter, deep friendships, life and professional lessons, and a genuine sense of home in Dallas and at Temple that will endure.

Thank you for inviting us to grow with you. May we all go from strength to strength.



Rabbi Rachel Mikva

Out of the Danger Zone

HOW TO HARNESS RELIGION FOR GOOD OVER HARM

Temple welcomed Rabbi Rachel Mikva earlier this month for the Rabbi David Lefkowitz Memorial Lecture and a weekend of Shabbat learning.

Discussions centered around “Dangerous Religious Ideas,” the title of a course she’s taught for several years, the name of her book and a reality she’s encountered in a rich career in the rabbinate and in academic life: No matter how much potential a religious idea has for good, it can also cause harm.

We caught up with her before her visit to explore the landscape of religious ideas and a way to deal with the volatility that sometimes accompanies them.

Explain the nature of a dangerous religious idea.

Religion is very powerful. I compare it to electricity, something we can’t imagine our world without. So much of the way it’s used is for good, but in every form, you can name examples of where it has caused harm.

How to mitigate the harm?

The subtitle of the book is “The Deep Roots of Self-Critical Faith in Judaism, Christianity and Islam.” Even our most closely held religious ideas have dangerous power. The more we can be aware of that power and reframe the discussion around them, the more we can make them a source of blessing. Deeply rooted in all the traditions is an intellectual humility, the fact that we are instructed to apply that to our faith.

In conservative theological settings, people can be suspicious of self-critical faith because they think it’s a violation of faith. In more progressive settings, they assume their ideas aren’t dangerous, that they’ve done all the work. Progressives often don’t realize the importance of those tools until you recognize your religious ideas can be dangerous.

Examples in progressive Judaism?

I think there is a tendency in Reform congregations to engage in Orthodox bashing. It’s almost a sport, a rejection of what they consider parochial attitudes, oppression of women, and more. That is a harmful rejection of traditional theologies. How do we not look down our nose about those who feel they understand God’s truth? How do we see our religious differences without contempt?

Another idea: It’s very important to protect freedom of religion. At the same time, we recognize that today, people are using this claim to justify discrimination. We have to realize this value we hold dear can nonetheless be used for harm.

Are dangerous religious ideas here to stay, even with the tools of self-critical faith?

You can’t permanently remove all the dangers. You’re always having to deploy your tools. The power to do good and harm are totally wrapped up together. The question is, how can faith still animate your being, your spirit and life? That’s the shape of the challenge. We’re always on the path of being cognizant of the impact of our religious ideas and thoughts on other people.

A CENTURY OF BAT MITZVAH

The bat mitzvah turns 100 this month, commemorating the groundbreaking achievement of Judith Kaplan, the first American girl to have a bat mitzvah ceremony, on March 18, 1922. Judith was the daughter of Rabbi Mordechai Kaplan, the founder of Reconstructive Judaism.

Temple Emanu-El’s first bat mitzvah was Janice Brin, whose celebration was on March 27, 1965, at the Sisterhood Mother and Daughter Shabbat, according to “A Light in the

Prairie,” a history of Temple Emanu-El by former archivist Gerry Cristol.

Today, the lives of both young men and young women, as well as adults who choose to engage in the ritual in adulthood, are enriched by Temple’s wonderful journey toward Bnai Mitzvah. (See the current celebrants on p. 12)

Does the young woman in the photo look familiar? Of course she does! A young Debra Robbins became bat mitzvah on Dec. 6, 1975, with Rabbi Paul Citrin at Temple Israel in Boston.



Choose Your Adventure at YL+E

By Shira Stevenson, Director of Youth Engagement

Electives are an opportunity for our students to see that things that we do every day can be viewed through a Jewish lens. We offer electives like cooking, nature, theater and STEAM (science, technology, engineering, arts and math).

We have 325 students in 16 different electives spanning grades 3-9. Some of our newest electives are Krav Maga, a self defense system designed by the Israeli army, and Teva, a Jewish environmental education program. Some of our most popular repeat courses are art, theater, food, film and escape room.



THE BEST KIND OF POP QUIZ

Our students can answer these questions and more thanks to our electives.

Jewish Food: History and Culture (grades 7-9)

How might the popular Middle Eastern hummus be swept up in politics?

Hummus is seen as indigenous to the Middle East and is historically Mizrahi, or descended from Jews of North Africa and the Middle East. In a longstanding lawsuit, Lebanon claims that only hummus made in Lebanon can be called hummus. There has been no action on the lawsuit.

Theater (grades 3-6)

What might you say in a monologue if you were Abraham right after being asked to sacrifice Isaac?

(Excerpted from a student's response) OMG, I just had the strangest day ever. So, I had just gotten back from Target and God is, like, 'sacrifice to me.' OK, I tell him. You want a sheep again or like a Chick-fil-A sandwich. And he is like 'what, no! I want your fav son.' I CAN'T JUST DO THAT!

Escape Room (grades 5-9)

What Temple history tidbits do you learn while planning your exit from a Jewish escape room?

Temple's previous locations and the years we moved, how our rabbis have been involved in history, which Confirmation class gifted the Czech Torah scroll to Temple and more!



The SHELLY Chronicles

The ECEC's indomitable leader reflects on 15 wonderful years

This year marks Shelly Sender's 15th year at the helm of the Early Childhood Education Center. Under her leadership, ferrets, rabbits, chickens and fish are all in the family and nature infuses every minute of learning.

The school has grown from 118 to 334 children enrolled, and from around 30 to 100 educators. At least five educators have served for more than 18 years, while four, including Alla Feynberg of blessed memory, for more than 30 years.

At the heart of the transformation that has made Temple one of the city's most sought after early childhood destinations is Shelly's commitment to putting children at the center of everything she does.

"My passion for children comes when you value children and see them for who they are," she says. "Children are such capable beings. They really feel so valued when you respect them and meet them where they're at."

Temple's Senior Director of Early Childhood Education recently reflected on 15 years of innovation and excitement and, most importantly, hugs and smiles far too numerous to count.

What do you remember most about that summer of 2007?

When I arrived, everything was red, blue, yellow and green and covered in Con-Tact paper. I remember scraping furniture to see what was underneath. We put everything in the hallway as we decluttered. It looked like a garage sale! It was four years before we were able to cultivate more intelligent materials. During that time, we donated all plastic toys and started creating different Parents' Association committees to enhance fundraising efforts so we could raise money for new spaces.



What's different now?

Fall Festival, Havdalah on Monday mornings to bring the school together, the Nature Playscape, Bauer Garden outside Pollman Hall, the Family Engagement Space, the big fish tank, the chicken hutch and nature room, a living science lab.

We redesigned every classroom space and transformed them into gorgeous, natural and home-like environments. We hired a school nurse, are on the third cycle of NAEYC accreditation (National Association for the Education of Young Children). We brought back the kindergarten program and now have two classes.

What wonderful innovations for our children. How do you see these relationships growing?

There's a strong need for deep family engagement and involvement. We are a haven for people to come through with young children. I always say children are going to make their best friends in preschool. It's a beautiful thing to see the families coming out of our school having bar and bat mitzvahs together. By involving parents more deeply, we've also cultivated more Temple leadership.

Parents of young children have been through a tough time with Covid.

What are you seeing?

With Covid, parents needed an outlet. They need assistance. They need support, they need education. They are so hungry for it. We're thinking of starting a parenting center, not only for our ECEC families but for all of Temple.

We started Together Time (an hour-long session of play and connection three times a week for families) and 55 families registered! There's such a need and a thirst for it.

What are some priorities for helping your staff develop?

We've provided a lot of professional development opportunities to staff to help them become deeper-thinking educators. They've been to Italy to learn about the Reggio Emilia method we teach. I led a 40-educator trip to Israel three years ago with Early Childhood Educators of Reform Judaism so that we could teach about Israel and Judaism through an early childhood lens. Our educators have also been to Oklahoma, Colorado and California. We are opening their eyes to see the level we want to get to. It has been very inspiring. When you invest in your educators, they tend to stay longer.

What does it mean to be child-centered?

We don't solve problems or give them the answers. They become young researchers.

In the old days, kids would get a paper plate and decorate a lion. Now, it's much more individualized. Instead of giving them a toy that has a specific cause and effect, everything is open-ended. Five children can use the same toy and play with it in a different way.

You are in the exciting process to become an IB (International Baccalaureate) preschool. Why is that a game changer?

IB aligns with our Reggio and Jewish philosophy. It's very community centric, and so much of what we've created fits with IB. It's the perfect next step for us.

Nature seems to be where everything comes together for you.

We've always been nature-based, with lots of gardening, composting, digging in the dirt. Now we spend a lot of time outside. Covid pushed us to realize one of my dreams. Now we'll never go back!

I see that we'll continue to cultivate outside spaces in what are right now just open fields. We'll create more havens for everybody to enjoy. The journey never ends. We've been on a wonderful 15-year journey, but there's still so much more to do.

PRE-SCHOOL	ECEC
Bright colors	Neutral tones
Plastic toys	Wooden materials and loose parts
Teachers	Educators
Specialists	Atelieristas
Yearlong road maps	Following the children's interests
Processed snacks	Whole food snacks
Teacher-planned lessons	Invitations to explore
Playground	Nature Playscape
Stagnant indoor spaces	Free outdoor experiences
Events	Family engagement opportunities
Art room	Atelier
Pollman hallway	Piazza
Blank spaces	Family Engagement Space, Bauer Garden, Gan Shalom
No nature program	Nature room, chicken shade garden, two farm-to-table outdoor classrooms
Staff meetings	Staff development opportunities for growth



William's Happy Place

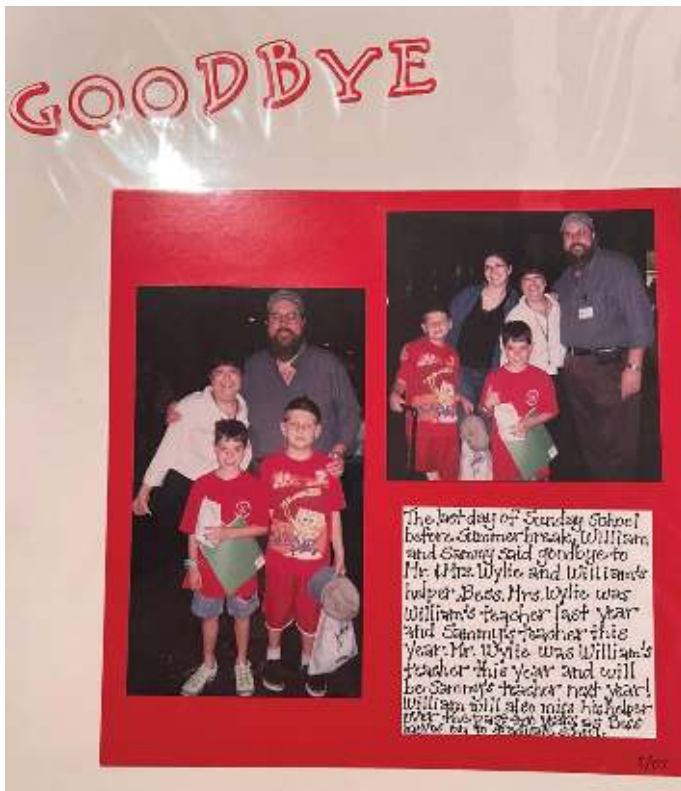
When Joan Weyser toured Temple's religious school to find a place for her son, William, who has autism, she didn't find the right class. The right class found her.

"I had read in the Texas Jewish Post that Temple was starting a program for special needs, and I met with Eileen Kreisler, founding director of Temple's Lomdim program." We toured the third-grade classes, and one of them was Shelly Wylie's class. Eileen explained that we were just looking at different classes, and Shelly said, 'I hope she chooses mine.'

"That was so sweet and so kind. As it turned out, that's the class I picked," she says.

William achieved full participation in religious school and had the benefit of helpers as he moved through the program. "They customized his bar mitzvah, made sure it was short and that he was able to read his portion," Joan says. Ultimately William became an assistant teacher in first grade.

When it came time for Confirmation, Rabbi Amy Rossel offered an alternative experience for William. "She said she had given it some thought and had decided to do a special ceremony with him and the community he had created in the first-grade classroom where he assisted. That was so much more meaningful for him. And once he was confirmed officially, they officially hired him and started to pay him."



Joan was so pleased with the program that she decided to teach in Religious School, now Youth Learning + Engagement, when she retired from DISD 10 years ago. "I wanted to give back to the program, so I became a Lomdim teacher too."

Now 25, William has come full circle. He's an assistant teacher in Shelly Wylie's third grade class.

LOMDIM, named after the Hebrew word for learners, follows the mainstream curriculum, including Hebrew, and is designed to meet the learning styles of all children. Our program includes children with dyslexia, processing differences, attention deficit hyperactivity disorder (ADHD), autism, and other special needs.

Contact: Colleen Kravulski, ckravulski@tedallas.org

A scrapbook page from the YL+E years in Shelly Wylie's class.

Seder-ific!

Amber Pierce is a Youth Learning+Engagement parent known for her creative and beautiful holiday celebrations with her family. Watch this space for ideas on how to put your own family's stamp on the holidays!



Amber Pierce with husband Sam Johnson, and sons Banner, Quinn and Knox Johnson.

Over the last two years, our Passover traditions have looked a little different. In lieu of the large get-togethers with extended family, we have been forced to create new ways of celebrating. Typically, our seder has always been relatively predictable, which I love because it makes the memories that much more special.

My Uncle Barry, for instance, could always be counted on for a special way of engaging the story of Passover. I think the kids' favorite part was when he first startled us with "hail" (mini Styrofoam balls) being flung across the room during the recitation of the 10 plagues. With the pull of a near-invisible fishing line tied to boxes hidden in the recessed part of the ceiling, a new tradition was born!

Since then, we never knew what spectacles would take place. Aunt Jacque added in snacks on the seder table one year, Mom added in costumes and puppets another year, and we've played a charades game to guess the plagues. Even during these past two years of being away from family on this special holiday, the fun continued in a new way. Here are a few things to try out this year.



Mini Matzo Ball Soup Shooters | rebeccalowin.com

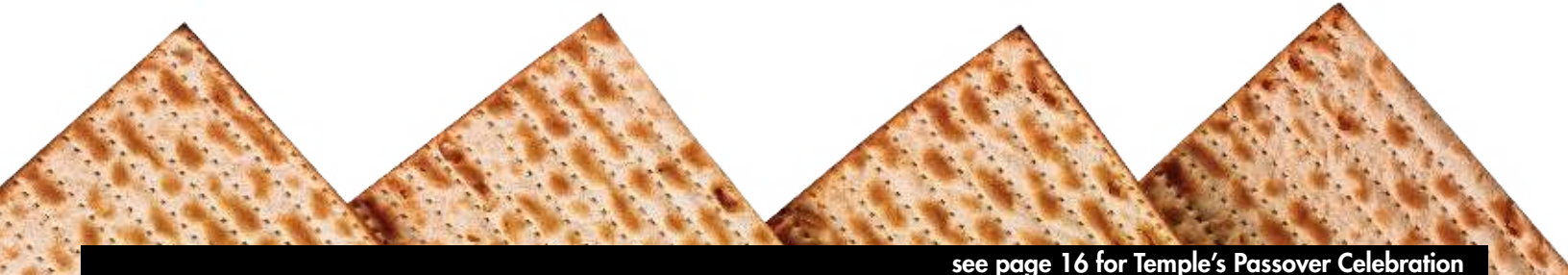
1 Assign various roles or parts of the Passover story to different guests at your seder table or on screen. They can either act out their parts during seder, or they can play a pre-recorded video.

2 Engage everyone in conversation by bringing Passover-inspired themes to modern times. For instance, discuss what plagues us now. If you're leading a virtual seder, go to padlet.com and create a user-friendly board for all to access. We got some pretty deep and creative answers last year.

3 Most elementary-aged kids and older are familiar with (very easy-to-create) Kahoot games. Create a Passover Kahoot game for everyone to participate in. These are easily shareable virtually or in-person. I'm happy to send you the link to our game last year and to our family video! Just email me: amber.pierce6@gmail.com

4 Put a new spin on the afikomen search! Make an adults-only search outdoors. Instead of awarding a prize to the person who finds it, consider a charitable donation in the winner's name.

5 At our house we love matzah pizza night! Try adding other unique variations of traditional foods to your seder or throughout the week. For instance, try a s'mores board with kosher-for-Passover ingredients using matzo instead of graham crackers. Or, try out Rebekah Lowin's recipe for Mini Matzo Ball Soup Shooters at rebeccalowin.com.



Celebration and Remembrance

BECOMING B'NAI MITZVAH



Spotlight: Rebekah Cooper

There was so much joy on Shabbat morning as Rebekah Cooper became bat mitzvah. Her friends from ECEC, pictured from left, Sadie Werner, Kendelyn Bassman, Allison Rench, Brielle Kommer, Lorelei and Nathan Pass, joined her to lead the motzi and the kiddush. “What a moment of pride, not only for the four generations of her family who were present but for our congregation and staff that a young person has built such strong connections in our community,” says Rabbi Debra Robbins.



Saul Rosen, April 2
Son of Yuh Min Chook and Michael Rosen
Lakehill Preparatory School
Tikkun Olam: Jewish Family Service



Eli Jolly Jones, April 23
Son of Jessica and Tyler Jones
Good Shepherd Episcopal School
Tikkun Olam: Family Gateway



Becket Von Concors, April 2
Son of Leslie and Baron Concors
St. Mark's School of Texas
Tikkun Olam: The Family Place and Crossroads Community Services



Ella Levin, April 23
Daughter of Lori and Matt Levin
Highland Park Middle School
Tikkun Olam: SPCA



Nathan Eli Pass, March 5
Son of Amy and Steven Pass
Parkhill Junior High
Tikkun Olam: VNA Meals on Wheels for Pets



Etella Dinaburg, March 12
Daughter of Elena and Simon Dinaburg
Lakehill Preparatory School
Tikkun Olam: Jewish Family Service, craft kits for kids



Grace Alason Helms, March 12
Daughter of Jennifer and John Helms
Greenhill School
Tikkun Olam: CHAI Community Homes for Adults



Henry Orlowski, March 26
Son of Tina and Marcus Orlowski
Ann and Nate Levine Academy
Tikkun Olam: Collecting games and stuffed animals for Children's Hospital



Griffin Green, April 9
Son of Ashley Greene and Jeffrey Green
Greenhill School
Tikkun Olam: Vogel Alcove



Sadie Nerenberg, April 30
Daughter of Amy and Rory Nerenberg
Highland Park Middle School
Tikkun Olam: Operation Kindness



Lorelei Abigail Pass, March 5
Daughter of Amy and Steven Pass
Parkhill Junior High
Tikkun Olam: Social justice projects at the Aaron Family Jewish Community Center



Mia Jade Jacobson, March 19
Daughter of Cynthia Huang and David Jacobson
Alcuin School
Tikkun Olam: Jewish Family Service, craft kits for kids



Gabe Frydman, March 26
Son of Regina and Aaron Frydman
Ann and Nate Levine Academy
Tikkun Olam: Collecting toys and games for Children's Medical Center



Benjamin David Lachar, March 26
Son of Whitney and Greg Lachar
Greenhill School
Tikkun Olam: Music and Memory, an organization that develops music therapy programs



Brielle Avery Kommer, April 9
Daughter of Neille and Lane Kommer
Parkhill Junior High
Tikkun Olam: Ronald McDonald House

BABY NAMINGS



Emmitt Emmanuel Betancourt
Son of Andrea and Anthony Betancourt



Sienna Eve Duran
Daughter of Stacey and Alex Duran
Sister of Lyla, Olivia and Mila



Averie Rose Preble
Daughter of Kellie and Jake Preble
Sister of Cohen Preble

CONVERSION



Natalie Shoemake

WEDDINGS



Maggie Glazier and Ben Falk

Genevieve Lukoff and Patrick Kline

NEW AND RETURNING MEMBERS

Bennett and Amanda Aaron
Ken, Brittney and Joey Annino
Robert Austein
Robert, Michael, Alexander
Kaplan, and Karen Belgiovine
Scott, Hayden and
Hannah Bender
Ally, Max and Zoe Benson

Nolan, Savanna and
Hunter Borden
Tim, Hannah and
Theodore Cassidy
Melanie, Daniel and Cole Crable
Samantha, Andrew and
Emilia Frank
Elliot, Jamie and Dan Gerson

Lorraine Friedman, Jared and
Cameron Goldstein
Brooke, Paul and Isabel
Guerrero
Alex, Alex and Meyer Korngut
Max Jaffe
Maddie Giese and
Christopher Wolf

Sharon Kagan
Debra Kress
Victoria Rose
Samantha, William, Audrey and
James Sheehan

IN MEMORIAM

Nurit Amit
Mother of Roni Amit and
Ohad Amit

Arnold Aronson
Father of Scott Aronson

Harrison Ball
Grandson of Kitzi Ball

Leni Bendorf
Mother of Fanny Watts, Robi
Bendorf and Allen Bendorf

Sharon Wildstein Bindler
Wife of Donn Bindler
Mother of Jill Bindler and
Robb Bindler

Joan Byerhoff
Mother of Anne Besser

Gordon Alan Cizon
Husband of Deidra Cizon
Stepfather of Todd Negley,
Brian Bihari and Ethan Klos

Charles Davidoff
Husband of Eileen Davidoff
Father of Bill Davidoff
Brother of Mark Davidoff and
Ronnie Davidoff

Stanley Engman
Father of Kim Chapman

James Faulkner
Father of David Faulkner

Richard Furst
Son of Margaret Furst
Father of Augie Furst and
Manie Furst
Brother of Robin Furst

Jean Garfield
Mother of Larry Garfield and
Raymond Garfield, Jr.

Lawrence Hermele
Father of Karen Levy

Elton Stanley Lipnick
Father of David Lipnick

Donald Lipp
Brother of Howard Lipp

Gary Mann
Father of David Mann

Robert Gerard Pollock
Father of Wendy Pollock
and Robert Pollock, Jr.

Don Rapport
Father of Kathy Rapport
and Robin Rapport

Joel Rubin
Brother of Joyce Maysall

Jolyn Rudelson
Mother of Justin Rudelson

Jessie Sackler
Mother of Dr. Marian Sackler
Sister of Deborah Anderson

Jerry Sandberg
Brother of Jeff Sandberg

Marilyn Schechter
Mother of David Schechter

Mona Schlachter
Mother of Shari Schlachter and
Marc Schlachter

Shirley Schnitzer
Mother of Gary Schnitzer, Julie
Schnitzer and Jeff Schnitzer

Jerry Skibell
Husband of Joan Skibell
Father of Jeff Skibell and
Mandy Hanu
Brother of Charles Skibell and
Sammy Skibell

Herschel Wilonsky
Husband of Margaret Wilonsky
Father of Robert Wilonsky and
Michael Wilonsky

Barbara Zale
Wife of Donald Zale
Mother of Julie Zale
Tobolowsky, Barry Zale and
Dana Zale Gerard
Sister of Sue Ring

All About Alexes

Every seven out of 19 years, an extra month is added to the Jewish calendar, a second month of Adar. It is said that joy increases in Adar, and when there's an Adar II, even more so!

At Temple, our joys are increased this month, by not one, but two couples with both partners having the same first name. The Alexes Horn and Korngut share what life is like on the double A-List.



Alex and Alex Korngut

Married two years, Temple members since December

Favorite moment of having a spouse with the same name:

When we are introduced to new people, it's always fun to see their reactions when they realize that both of us are Alex.

Any mixups?

Airport TSA agents always seem to double check our IDs.

Alex and Alex Horn

Married 4½ years, Temple members since 2016

The best part about Double A:

When people ask us what we call each other — and the ongoing nicknames that people come up with!

Any uh-ohs?

Temple clergy and lay leadership mix us up a lot when it comes to sending emails. We also had a funny moment at the dentist when the other Alex's files were pulled.



SHINE THE LIGHT ON MENTAL WELL-BEING

SUPPORT AND RESOURCES FOR SPIRITUAL AND MENTAL WELL-BEING

Grief Support on Zoom

March 8 and April 12 from 11:30AM to 1PM

For Zoom link, contact Meredith Pryzant, Director of Member Support, mpryzant@tedallas.org or 214.706.0000, ext. 122.

Jewish Family Service Support Groups

Our community partner, Jewish Family Service, helps adults, children and families navigate mental health challenges and coping skills through a variety of support groups. To learn more please visit these web pages: jfsdallas.org/services/children-teens/support-groups/ jfsdallas.org/services/adults/support-groups/

Substance Abuse Support for Friends and Families

Thursdays every week from 5:30-6:30PM on Zoom

Contact for info and Zoom link:

Freda Heald, fredaheald@yahoo.com

HERE FOR YOU

Temple clergy and staff are available to support our community members navigating mental and physical health issues. Please reach out to us for help if you, a friend or family member is experiencing a crisis or an ongoing issue.

NO BARRIERS

Finances should never be a barrier to participation in Temple life. Confidential financial assistance is available for most Temple events, tuition and dues. For more information, contact Meredith Pryzant, Director of Member Support, mpryzant@tedallas.org or 214.706.0000, ext. 122.

MARC STANLEY NAMED AMBASSADOR TO ARGENTINA



Temple member and longtime Jewish leader Marc Stanley was confirmed in January as the U.S. Ambassador to Argentina. Mazel tov to the entire Stanley family from your Temple family!

2022 ADL WALK AGAINST HATE

Sunday, April 3 at 9AM, PNC Plaza at American Airlines Temple Team Captain: Erica Strauss, Director of Social Justice and Special Projects, estrauss@tedallas.org. Register at walkagainsthate.org/dallas



150TH ANNUAL MEETING OF TEMPLE EMANU-EL

APRIL 6, 2022

Official Information and Nominations for Officers and Board of Trustees

The Nominating Committee consisted of Risa Gross, Chair; Macki Ellenbogen, Sara Gail, Jeff Kitner, Brandon Poland, Mike Rosen, Scott Rosuck, Rick Rosenberg, and Julie Weinberg. Serving as ex-officio to this committee were Beth Gold, President, and Bob Krakow, First Vice President. In accordance with Article VI, Section 10 of the by-laws of Congregation Temple Emanu-El, the Nominating Committee submits the following nominations for officers and trustees:

NEW SLATE

The following people are being proposed to serve as officers for a one-year term:

President

Beth Gold

First Vice President

Bob Krakow

Vice President

Sara Albert

Debbie Andres

Jeana Foxman

Sara Frankfurt Gail

Barry Greenberg

Jon Rollins

Secretary

Rachelle Weiss Crane

Treasurer

Greg Gerstenhaber

The following people are being proposed to serve for a first two-year term:

Eli Cohn-Wein

Ariana Cook

Betsy Kleinman

Josh Nichols

Jená Prystowsky

Steven Hicks-Safra

LE Wolovits

The following people are being proposed to serve for a second two-year term:

Nikki Gibson

Gayle Johansen

Josh Kahn

Hanne Klein

Allison Levy

Randy Ratner

Paige Sachs

Matthew Swerdlow

Tina Wasserman

CONTINUING BOARD OF TRUSTEES

The people listed below are not part of the slate because they are in the middle of their term. Their names are listed for your information only, and in order that you may get a full picture of the proposed board.

The following people have served the first year of their second two-year term:

Rachel Elkin

Macki Ellenbogen

Ann Zimmerman Gallant

Ladd Hirsch

Gary Kahn

Fonya Mondell

Brad Sham

The following people have served the first year of their first two-year term:

Alice Barnett

Lauryn Bloom

Mary Lee Broder

Liz Chalfant

Deidre Cizon

Katrina Gross

Nancy Rivin

Mike Rosen

Sally Rosenberg

Scott Rosuck

Linda Sheff

David Steinfield

Julie Weinberg

Peter Weinstock

Michelle Whitman

Linda Wimberly

Randy Winski

The following past presidents serve on the Board of Trustees:

Chris Cheniae

Robert Cohan

Bert Fischel

Larry Ginsburg

Suzi Greenman

Harold Kleinman

Robin Kosberg

Ronald Mankoff

Scott McCartney

Stanley Rabin

Bernard Raden

Frank Risch

Herbert Rosenthal

Mike Sims

Mark Zilbermann

APPOINTMENTS AND DEPARTING BOARD MEMBERS

The following appointments to the Board of Trustees have been made in accordance with Article IV, Section 7 of the by-laws by virtue of their congregational office:*

Brotherhood President

Xico R. Baruch Garcia

WRJ Co-Presidents

Sarith Abramowitz

Celia Saunders

Cemetery Committee Chair

Julie Bleicher

We thank the following members who so willingly and ably served the congregation and now depart the Board of Trustees:

Rhoni Golden

Paul Michaels

Elise Plaksen

Peggy Papert

Barbara Solomon

Diana Telesca

Rachel Wilson

*Changes in Board members are subject to organizational elections or presidential appointments taking place later in the year.

TEMPLE TIE-IN AT THE DALLAS MUSEUM OF ART

The Dallas Museum of Art is featuring the work of Mexican American sculptor Octavio Medellin in an exhibit that will run through January 2023. His work at Temple includes "The Promised Land," pictured far right, a brass and copper sculpture, installed on the exterior wall east of Linz Hall and as you approach the doors to the Olan Sanctuary entrance. Medellin also fabricated the shining silver gold, blue, green and blue mosaics that form the candelabra on the Olan Sanctuary ark wall.



At left: "Spirit and Form," Genoveva of Brabante, 1949, direct carving in Honduras red mahogany, Courtesy of Dallas Museum of Art

Heart to Table

PASSOVER 2022/5782 | FIRST SEDER APRIL 15

As we retell the story from enslavement to freedom, we embrace the diverse voices of our community, enjoy the tastes of the season, check in with one another on our well-being and renew our commitment to hunger relief. We who were once strangers reach out to those escaping persecution, and lift our voices in prayer and song.

Prepare and Connect

Passover Connection Lunch

Saturday, March 26 | 12-1:30PM

Following Shabbat Services, we'll have a chance to share a light lunch. In anticipation of Passover, we encourage you to make new connections and touch base to make sure everyone gathered has a place to go for seder.

JCRC Interfaith Seder:

Sharing Universal Values

Tuesday, March 29 | 6:30PM

Shearith Israel, 9401 Douglas Ave.

The eighth annual interfaith seder will feature Rabbi Andrew Paley of Temple Shalom and Pastor Bryan Carter of Concord Church.

Dayenu & Delicious: A Passover exploration of food, with Cantor in the Kitch Leslie Niren

Wednesday, March 30

Savor a multicultural Passover exploration of food, ritual and customs around the table, led by Cantor in the Kitch Leslie Niren. This special event will feature conversation about Passover traditions, story-sharing and recipes from a variety of countries and cultures that represent our congregation. Guaranteed to get your creative seder juices flowing!

Prayer

Friday, April 15 | 5PM on Zoom

We welcome Shabbat before the Passover seder with Cantor Leslie Niren.

Saturday, April 16

Chever Torah | 9AM on Zoom

Shabbat and Festival service | 10:30AM

Lefkowitz Chapel and online

Friday, April 22

Festival service with yizkor | 10:30AM

Stern Chapel, TE Live and Facebook Live

Mental Well-Being

Just as we celebrate freedom from physical bondage, Passover is also a time to reflect on the mental and emotional grip of loneliness and depression. The Blue Dove Foundation offers wonderful resources for Jewish mental wellness. thebluedovefoundation.org

Register for all events at tedallas.org/passover

Links for online services will be distributed in the Thursday email before the holiday.

LET ALL WHO ARE HUNGRY COME AND EAT

Here are three ways to help our neighbors this season. Please donate funds, non-perishable foods and items needed for resettlement to the efforts below.

Passover Hunger Relief

Financial donations are accepted at participate.tedallas.org/hunger-relief-donation



Donate to Vickery Meadow Food Pantry

We will be collecting items from March 28 to April 24 to give to the Vickery Meadow Food Pantry. You may drop off

your items at Temple. The most needed items are: cooking oil, flour, coffee, sugar, chicken ramen noodle soup, orange juice in plastic bottles, Covid face masks, toilet paper, toothpaste, toothbrushes, shampoo, hand sanitizer, liquid and bar soap

Afghan Refugee Needs

Send a check to Temple's Disaster Relief Fund and mark it for Afghan Resettlement or fill out this form: participate.tedallas.org/afghan-refugee-volunteer-form

BLUEGRASS ON THE BIMAH

NEFESH MOUNTAIN • MAY 6-7



American Bluegrass with a Jewish perspective!



Celebrate Israel's Independence Day with Nefesh Mountain, one of today's formative boundary-pushing Bluegrass/Americana bands. Nefesh Mountain returns for an unforgettable weekend of Jewish spirit and soul, combined with American roots music. Don't miss Dani Zasloff, Eric Lindberg and their incredible band.

"Refreshingly eclectic. A master class in string music. Nefesh Mountain preaches peace, understanding, and acceptance with musical muscle."

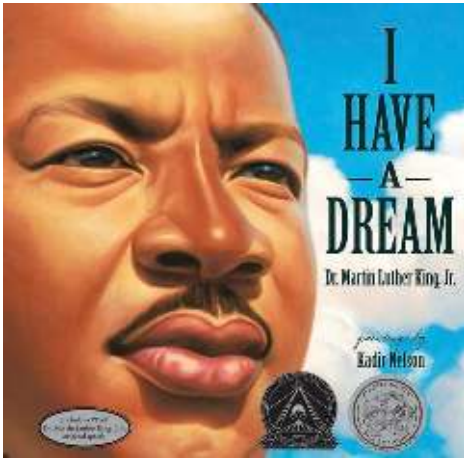
—Rolling Stone



And Justice For All

Five children’s books shed light on peaceful protests, individual rights and civic engagement.

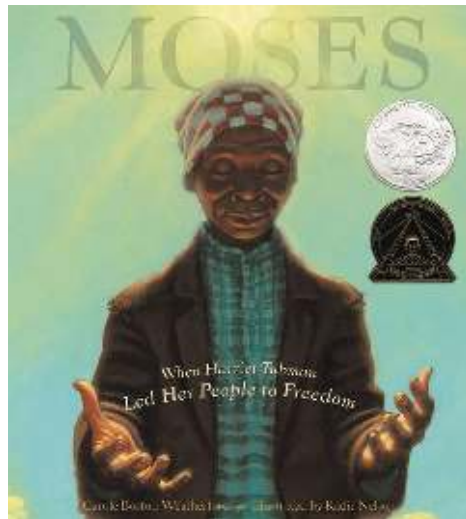
COMPILED BY JEANNE ZAMUTT, LIBRARIAN FOR THE ECEC AND YL+E.



I Have a Dream

by Dr. Martin Luther King, Jr.

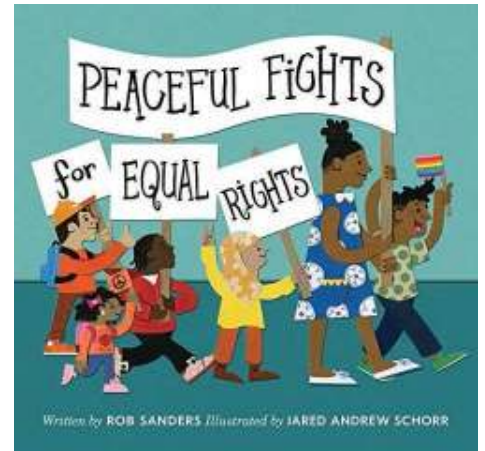
Read Dr. King’s timeless “I Have a Dream” speech for his inspiring message of freedom, equality, and peace.



Moses: When Harriet Tubman Led Her People to Freedom

by Carole Boston Weatherford

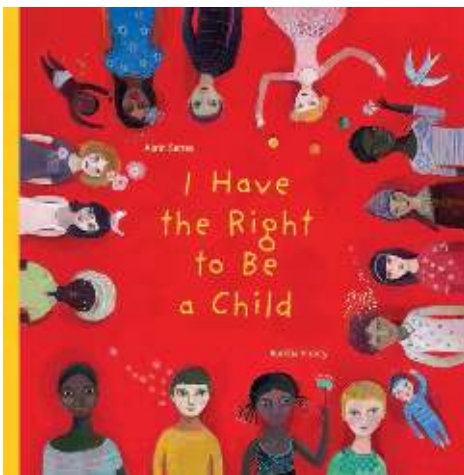
Learn the story of Harriet Tubman, a courageous woman who was born into slavery and escaped. She earned the name Moses for her heroic role in freeing enslaved people through the Underground Railroad.



Peaceful Fights for Equal Rights

by Rob Sanders

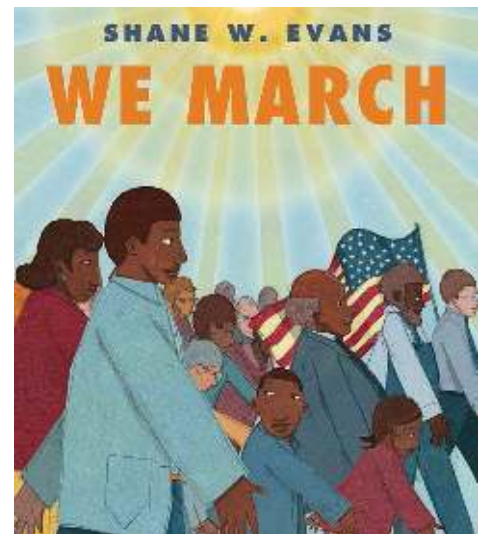
Explore the ideas of resistance and activism in this introduction to civic engagement and peaceful protest.



I Have the Right to Be a Child

by Alain Serres

This book describes what it means to be a child with rights — from the right to food, water and shelter, to the right to go to school, to the right to be free from violence, to the right to breathe clean air, and much more.



We March

by Shane W. Evans

An award-winning illustrator and author paints a vivid picture of the March on Washington in 1963, the day Martin Luther King, Jr. delivered the “I Have a Dream” speech.

Here to Listen

Temple Emanu-El has launched a listening campaign on mental well-being, in partnership with Dallas Area Interfaith.

Groups of eight to 10 people will come together in person or online to ask questions that we hope will spark meaningful and empowering conversations as we move toward building collective action. The stories we share and questions we ask will help shape not only our Temple story, but that of the faith community in Dallas. The campaign will continue through May 25.

“This is a way to respond to the brokenness of our world,” says Rabbi Kimberly Herzog Cohen. “At every turn, there are levels of uncertainty and anxiety. Where is our heart center in the fire, the spark that can bring us together to affect change within ourselves and beyond ourselves.”

Rabbi Herzog Cohen says the group hopes to reach at least 200 people in a variety of settings, from an open call at Temple to individual house meetings.

For more information or to attend a listening campaign meeting, contact Erica Strauss, Director of Social Justice and Special Projects, at estrauss@tedallas.org.



The Questions

- 1. Where/when are you feeling the most pressure and stress right now in your life?**
- 2. Do you feel supported by others, by community?**
- 3. Where do you find strength?**



2022 RACIAL EQUITY NOW COHORT

Temple Emanu-El has been selected as one of 10 nonprofit organizations to participate in the 2022 Racial Equity NOW cohort.

The cohort is a 10-month experience that provides racial equity training, coaching, case study presentations, policy review and development and a community history tour. Temple joins the Dallas Museum of Art, Promise House and Big Brothers Big Sisters, among others, in the cohort.

“This exciting partnership will help infuse our internal antiracism accountability and action work in the coming months,” said Alexandra Horn, Director of Congregational Engagement.

Welcome back, Rabbi Philip Nadel



Our friend from Congregation YOZMA in Modi'in will return to Temple Emanu-El on March 25-26 for a variety of exciting learning and worship experiences.

Shabbat Evening Service

March 25 at 6:15PM, Stern Chapel

Rabbi Nadel will deliver the sermon and introduce us to the new prayer book of the Israel Reform Movement, Tfilat Haadam, a prayer for humanity.

Connections and Culture: A Conversation Among Friends

Chever Torah March 26 at 9AM, online

On Shabbat morning, we will be sharing in a new model of relationship building in Israel. At Chever Torah from 9 to 10AM, members of Temple and members of Congregation YOZMA will learn online together. Rabbi Nadel will facilitate a conversation around traditional and modern approaches to family and marriage in Israeli society through the short Moroccan film, "Blessed." Afterward, our congregations will join together in Zoom breakout rooms for conversation and connection about the film.



SAVE THE DATES

Save the dates for the annual observances of Yom HaShoah, Holocaust Memorial Day; Yom HaZikaron, Israel Remembrance Day and Yom HaAtzmaut.

Watch for details of Temple and community commemorations for Yom HaShoah and Yom HaZikaron and will infuse aspects of Israeli culture, food and art into its events at Yom HaAtzmaut.

Yom HaShoah
April 27-28

Yom HaZikaron
May 3-4

Yom HaAtzmaut
May 4-5



Temple Journeys

Israel
June 15-26, 2022



Multigenerational Trip led by Rabbi David Stern

For all ages and stages

Contact: Rabbi Amy Rossel,
arossel@tedallas.org

Register:

www.tfaforms.com/4961489



Food, Culture and Art led by Cantor Leslie Niren

Contact: lniren@tedallas.org

Register: viasabra.com/trip/leslie-niren-temple-emanu-el-dallas-june-2022



Gifts of Memory, Honor and Gratitude



OUR CONGREGATION

Dora Aronson Helping Hands Fund

Distributions by Rabbi David Stern to individuals in need of financial assistance, particularly in dire situations

Memory of William Byron Branscum

by Howard Freed

Memory of Bernard W. Fischman

by Lawrence Fischman

Memory of Irwin Grossman

by Irma Grossman
by Julie & David Kronick

Memory of Stanley H. Litman

by Susan & Joel Litman & Family

Memory of Art Pay

by Debbie & Alan Postel

Memory of Barbara Zale

by Nancy & Len Berry

by Artyce Colen

by Betty "Bootsie" Golden

by Marilyn C. Golman

by Irma Grossman

by Gayle Johansen

by Sister & Joel Steinberg

by Sandy Tobias

Appreciation of Rabbi David Stern

by Kathy Rapport

Susan Salom Clergy Good Works Fund

Distributions to charitable organizations, individuals in need or community causes by Temple's clergy

Memory of Gerald Barnes

by Lisa & Steve Lieberman

Memory of Ronald Blum

by The Blum Family

Memory of Andrew Bramley

by Ruth Andres

Memory of Madaline Broude

by Mike, Rachel, Mara & Tobin

Levy and Jean & Suzanne

Karotkin

Memory of Julius Buxbaum

by The Alexis Family

Memory of Irene Cohen

by Marilyn Fiedelman

Memory of Jerry Ely

by Richard Ely

Memory of Ron Fiedelman

by Marilyn Fiedelman

Memory of Marcia Fitzmaurice

by Melinda Raso Kirstein & Phil

Kirstein

by Bobbi & Jerry Wells

Memory of Judith Frank

by Terry & Jeff Levinger

Memory of Sheldon Frankel

by Ettie & Melvin Weinberg

by Regina, Micah, & Shira

Ziegler

Memory of Debbie Freed

by Joy & Jeff Phillips

Memory of Will Friedman

by Lotty & Peter Casillas

Memory of Jean Garfield

by Julie & Michael Lowenberg

Memory of Charles Gartner

by Gigi Gartner

Memory of Louise Gartner

by Gigi Gartner

Memory of Gail Goldstein

by The Roff Family

Memory of Claire Greenberg

by Marilyn Fiedelman

Memory of Sandra Hollander

by Marilyn Fiedelman

Memory of Beth F. Kahn

by Gary Kahn

Memory of Florence Levy

by Mike, Rachel, Mara &

Tobin Levy and Jean &

Suzanne Karotkin

Memory of Harry Levy

by Mike, Rachel, Mara & Tobin

Levy and Jean & Suzanne

Karotkin

Memory of Meyer Levy

by Mike, Rachel, Mara & Tobin

Levy and Jean & Suzanne

Karotkin

Memory of Donald Lipp

by Lotty & Peter Casillas

by Bobbie & David Repp

Memory of Don Rapport

by Ruth Andres

Memory of Richard E. Rosenthal

by Nancy Rosenthal

Memory of Sandie Rosenthal

by Nancy Rosenthal

Memory of Marilyn Schechter

by Gayle Johansen

Memory of Shirley Schnitzer

by The Family of Shirley

Schnitzer

Memory of Louis Sonnentheil

by Joanne & Steve Levy

Memory of Vic Trubitt

by Sherilee & Richard Trubitt

Memory of Nellie Waranch

by The Alexis Family

Memory of Sandra Stein Weil

by Ruth Andres

by Lynn & Bob Behrendt

by Marilyn Fiedelman

by Anita Yudin

Memory of Herschel Wilonsky

by Lotty & Peter Casillas

by Mr. & Mrs. William

Engelberg & Adrienne

Svidlow

by Frances & Alan Harris

by Bobbi & Jerry Wells

Memory of Barbara Zale

by Joyce & Selly Belofsky

by Jackie and Jerry Bendorf

by Karen Bradshaw &

Fred Shapiro

by Eunice & Marvin Gerard

by Cathey & Jim Greenfield

by Gary Kahn

by Hanne Klein

by Leslie & Steven Levin

by Elise Power & David Becker

by Peachy Rudberg

by Frada & Alan Sandler

by Ashley & Jeff Skibell

by Doty & Lew Weinstein

Appreciation of Cantor Vicky Gilkin

by Margaret Wilonsky

Appreciation of Rabbi Kimberly Herzog Cohen

by The Leni Bendorf Family

by Nancy & Ron Pope

Appreciation of Sora Lei Newman

by Ruth Andres

Appreciation of Rabbi Debra Robbins

by Carolyn Blum

by Sarah & Michael Fisher

Appreciation of Rabbi David Stern

by Christell & Michael Baum

by Bonnie & Monte Hurst

by Margaret Wilonsky

by The Young Presidents' Organization —

Dallas Chapter

Appreciation of Rabbi Daniel Utley

by Sara & Mark Albert

As a Contribution

by Pauline Graivier

by Caroline Kaye

by Suzanne & Bill Utley

Honor of Rabbi Kimberly Herzog Cohen

by Stacey & Alex Duran

by Jessica Maxa & Cameron

McElyea

Honor of Rabbi Debra Robbins

by Arlene & Michael Glazer

by Karen & James Reisman

by Marcia & Arthur Rubinett

Honor of Rabbi David Stern

by Marcia & Arthur Rubinett

Honor of Rabbi Daniel Utley

by Joyce E. Kelly

Marriage of Courtney Reisman & Kevin Haines

by Karen & James Reisman

Marriage of Lauren Glick & Nathan Levick

by Marcia & Arthur Rubinett

Naming of Sienna Duran

by Stacey & Alex Duran

Naming of Grayson Pope McElyea

by Jessica Maxa & Cameron

McElyea

Naming of Bryce Steinberg

by Judy & Robb Steinberg

Speedy Recovery of Macki Ellenbogen

by Marcia R. Grossfeld

Anne & Sam Kesner Caring Congregation Fund

Assistance for Temple members through all phases of life including hospitalization, elder care, military service, mental health challenges and grief

Memory of Lois Bernstien

by Paula & Norm Feldman

Memory of Stanley Engman

by Debbie & Marc Andres

Memory of Harry Feldman

by Paula & Norm Feldman

Memory of Sidney Goldstein

by Barbara Miller

Memory of Helen Grossfeld

by Bonnie & Michael Grossfeld

Memory of Gary Mann

by Melissa & Matt Rubel

Memory of Paul McIntosh

by Ellen McIntosh

Memory of Norma Skibell

by Joan & Jerry Skibell, z"l

Memory of Arthur H. Stern

by Helen Stern

Memory of Sandra Stein Weil

by Myra & Bert Fischel

by Lenora & Jerry Levin

by Irene & Bernard Raden

Memory of Barbara Zale

by Debbie & Marc Andres

by Carolyn Blum

by Phyllis & Jerry Prager

by Marilyn & Jack Rubin

As a Contribution

by Kathy & Randy Catoe

Birthday of Ira Silverman

by Bonnie & Michael Grossfeld



OUR TEMPLE AND CEMETERY

Rose Marion and Lee H. Berg Building Fund

Upkeep and maintenance of our historic building

Memory of Gerald Barnes

by Jeffrey Landsman

Memory of Joan Beck

by Jay Beck

Memory of Lawrence Burk

by Joan & Lawrence Katz

Memory of Morris Cohen

by Helaine Trachtenberg

Memory of Neal Cowin

by Marjorie Cowin

Memory of Mel Crohn

by Helaine Trachtenberg

Memory of Charles Davidoff

by Audrey & Stanton Unell

Memory of Rose Friedman

by Gigi Gartner

Memory of Will Friedman

by Linkie Seltzer, Robert Seltzer,

Adrienne Lithman & Cathy

Negrel

Memory of Richard Furst

by Rowena & Dave Galerston

Memory of Jean Garfield

by Bobbi & Richard Massman

Memory of Alvin Goodstein

by Richard Rome

Memory of Claire Greenberg

by Cindee & Michael Gold

Memory of Bette Katz

by Sheri & William Cobb

Memory of Ed Katz

by Sheri & William Cobb

Memory of Steve Katz

by Sheri & William Cobb

Memory of Adam Samuel Kleinman

by Harold Kleinman

Memory of Abraham Stanley Kochman

by Shirley Kochman

Memory of Becky Robinson

by Carol & Barry Sobol

Memory of Judy Rome

by Richard Rome

Memory of Erich Rosenbaum

by Helaine Trachtenberg

Memory of Esther Rosenbaum

by Helaine Trachtenberg

Memory of Jessie Sackler

by Marian S

by Ruth & Andrew Suzman
by Helaine Trachtenberg
by Audrey & Stanton Unell

As a Contribution

by Joyce & Ira Fritz
by Felicia & David Morris
Birthday of Susan Chazanov
by Marti, Chad & Jackie
Herman

Honor of Jean Eisenberg
by John Eisenberg

Temple Emanu-El Cemetery Endowment Fund

*Distribution from the Temple's
foundation supporting the
maintenance and improvement
of the cemetery grounds*

Memory of Howard Moss
by Terri Hornberger
Appreciation of Jeff Friedman
by Janice Moss

Rabbi Gerald J. Klein Memorial Cemetery Fund

*Beautification and
improvements of the Temple
Emanu-El Cemetery*
Memory of Hannah Trillo
by The Trillo Family

Rabbi Gerald J. Klein Garden Fund

*Maintenance of the Klein
Garden*
Memory of Minette Berman
by Toni & Morey Silverman
Memory of Max Drilling
by Joan Essensfeld
Memory of Mike Levy
by Joanne & Steve Levy
Memory of Lois Okon
by Tricia & Matt Gold
Memory of Arnold Rieter
by Carol & Larry Tobias
Memory of Dorothy Schlang
by Mel Ayer & Katie O'Halloran
Memory of Shirley Schnitzer
by Cynthia & Greg DeMars
Memory of Marilyn Vogel
by Marguerite Burtis &
Peter Vogel
Memory of Barbara Zale
by Sandy & Dan Gorman

Alex F. Weisberg Library Fund *Purchases of Judaic books, publications and entertainment media*

Memory of Jessie Sackler
by Harriet Fein & Nancy
Riseman



GENERAL

Temple Emanu-El General Operating Fund

*Support of Temple's general
programs and events*

Memory of Gerald Barnes
by Tom Portwood
**Memory of James Edward
Bartfield**

by Sarah & Steve Bartfield
Memory of Libby Bender
by Dianne & Michael Bender

Memory of Lawrence Burk
by Rita & Mitchell Rasansky
by Penny Willhite

Memory of Judith Frank
by Jan & Tom Timmons

Memory of Sheldon Frankel
by Eunice & Marvin Gerard

Memory of Richard E. Freed
by Diane & Gary Freed

Memory of Herman Friedman
by Natalie Friedman

Memory of Jean Garfield
by David Steinhart

by Phyllis & Ronald Steinhart
**Memory of Mollie
Solomon Klein**

by Sister & Joel Steinberg
Memory of Louis Malow

by Barbara & Richard Toronto
Memory of Gary Mann

by Susan & Abbye Silver
Memory of James Roth

by Natalie Frankel
Memory of Jolyn Rudelson

by Jan & Tom Timmons
Memory of Oscar J. Steinberg

by Sister & Joel Steinberg
Memory of Walter Steirn

by Wendy & Stephen Lieman
Memory of Roz Weiner

by Vera & Larry Reinstein
Memory of Herschel Wilonsky

by Sheila & Richard Lerer
Memory of Barbara Zale

by Mary Lee & Michael Broder
by Patsy Fagadau

by Peter Fonberg
by Helen & Jerry Frank

by Shirley & Sonny Landsberg
by Cameron, Jane & Sammy
Larkin

by Stephanie & Daniel Prescott
by Judi & Randy Ratner

by Andrea & Ben Statman
by Phyllis & Ron Steinhart

by Jackie & Steve Waldman
**Appreciation of Rabbi Debra
Robbins**

by Nicole & Kevin Cooper

Birthday of Susan Chazanov
by Gayle & Jeffrey Borovay

Temple Emanu-El

Endowment Fund

*Distribution from the Temple's
foundation supporting
Temple's programs*

Memory of Sheldon Frankel
by Sharon Roth

**Memory of Lawrence
Hermele**

by Sheryl & Gordon Bogen
Memory of Barbara Rabin

by Nancy & Hank Rothfeder
Memory of Mona Schlacter

by Lindsay & Jeffrey Steinberg
Memory of Arnold Schwartz

by Bobbi & Richard Massman
Memory of Sandra Stein Weil

by Leslye & Glenn Geller
Memory of Barbara Zale

by Becca & Allen Bodzy
by William B. Marks

by Lindsay & Jeffrey Steinberg
**Appreciation of The Jill Stone
Community Garden**

by Sylvia & Marshall Engell
Birthday of Mary Lee Broder

by Sue & Bernie Apter
Honor of Barbara Zale

by Rose & Bill Lumry



MUSIC AND PRAYER

Music Fund

*Enhancement of Temple music
programs*

**Memory of Jeffrey
Blumenthal**

by Ginny & Mark Dameron
Memory of Ron Fiedelman

by Ellen & Arnie Marks
Memory of Jennie D. Katz

by Marlene Glasser
Memory of Roslyn Meadow

by Janet & Mitch Jacobs
Memory of Sam Szor

by Nancy & Jerry Szor
Memory of Sandra Stein Weil

by Gayle Johansen
**Appreciation of Cantor
Vicky Glikin**

by Brad Blumenthal
**Appreciation of Cantor
Leslie Niren**

by Brad Blumenthal
by Sarah & Michael Fisher

by Kathy Rapport
As a Contribution

by Kathy & Randy Catoe
Bar Mitzvah of Jake Kerstine

by The Kerstine Family



ADULT PROGRAMS

AtiD (Young Adults)

*Support of Jewish engagement
of young adults in their 20s
and 30s*

Memory of Toby Lederman
by Donna & Mike Winemiller,
JoAnn, Robert, & Morgan
Tobey

Henry D. Schlinger Ethics Symposium Endowment Fund

*Support for the ethics
symposium*
Memory of Melvin S. Aronoff
By Norma Schlinger

Katherine F. Baum Adult Education Fund

*Support for adult education
programs*
Memory of Chick-Sung Chook
by Carol & Leonard Lebowitz
Memory of Joseph A. Epstein
by Joanne & Don Epstein
Memory of Barbara Zale
by Rita Kahn
by Betsy & Jeff Robinson



SOCIAL JUSTICE

Hunger Relief Projects

*Collection of funds for hunger
relief throughout the year,
especially during High Holy
Days and Passover*

Memory of Inge Bosse
by Donna & Jeff Bosse

Memory of Ann Singer Cohen
by Harriet Cohen

Memory of Warren Cohen
by Joyce & Joe Rosenfield

Memory of Charles Davidoff
by Lisa & Jim Albert

**Memory of William E.
Friedman**

by Karen & Shelby Wyl
**Memory of Dorothy & David
Philip Kaufman**

by Terry & Jeff Levinger
Memory of Leslie Kottwitz

by Susan & Michael Kottwitz
Memory of Toby Lederman

by Susan & Daryl Beck
Memory of Barbara Levy

by Helen Feldman
Memory of Marvin Meadow

by Janet & Mitch Jacobs

Memory of Jolyn Rudelson

by Dorothy Borschow
by Faye & Howard Polakoff

Memory of Irene Warshaw
by Lynne Bogart

Memory of Sandra Stein Weil
by Joyce & Joe Rosenfield

by May Sebel
Memory of Herschel Wilonsky

by Dorothy Borschow
by Ann & Michael Gallant

by Joyce & Joe Rosenfield
by Lori Stahl

Memory of Barbara Zale
by Lisa & Jim Albert

by May Sebel
by The Teichman Family

**Anniversary of Bonnie &
Michael Grossfeld**

by Sally Pian & Ira Silverman
Appreciation of Evelyn Fox

by Dorothy Borschow
**Appreciation of Rabbi
Kimberly Herzog Cohen**

by Sharon Kagan
As a Contribution

by Betty Jo & David Bell
by Kathy & Randy Catoe

by Roz Katz
**Speedy Recovery of
Ronnie Cohen**

by Joyce & Joe Rosenfield
**Speedy Recovery of Macki
Ellenbogen**

by Joyce & Joe Rosenfield
**Speedy Recovery of
Nelda Golden**

by Mary Ann Lustig

by Rob, Melissa, Sabrina &
Chelsea Stone

Memory of Sandra Stein Weil
by Suzi & Jack Greenman

by Stacy & Stuart Simon
Memory of Herschel Wilonsky

by Suzi & Jack Greenman
by Rosie Stromberg

Memory of Barbara Zale
by Annette Corman

by Tricia & Matt Gold
**Anniversary of Bonnie &
Michael Grossfeld**

by Marcia R. Grossfeld
**Appreciation of Nina Cortell
& Bob Fine**

by Randi & Mike Smerud
As a Contribution

by Risa & Marc Kesselman
Birthday of May Sebel

by Jeri & Leland Dushkin

Priscilla R. Stern Memorial Literacy Fund

*Support of literacy projects
in the general and Jewish
communities*

Memory of Ruth Albert
by Nancy & Tony Kaufman

**Memory of Gerald W.
Bernstien**

by Lynn & Mark Bernstien
Memory of Lois Bernstien

by Lynn & Mark Bernstien
Memory of Stanley Engman

by Ruthie & Alan Shor
Memory of Will Friedman

by The Richard Albert Family
Memory of Claire Greenberg

by Nancy & Tony Kaufman
Memory of Anne Kaufman

by Nancy & Tony Kaufman
Memory of Louie Kissner

by Ettie & Melvin Weinberg
Memory of Esther Rosmarin

by Suellen & A. J. Rosmarin
Memory of Jolyn Rudelson

by Ettie & Melvin Weinberg
Memory of Sandra Stein Weil

by Joni & Bob Cohen
Memory of Barbara Zale

by Lynn & Bob Behrendt &
Michele Allman

by Sherrie & Jeff Klein
by OriAnn Phillips & Scott
McCartney

by Suellen & A. J. Rosmarin
by Ruthie & Alan Shor

Birthday of Marc Andres
by Ruthie & Alan Shor

Birthday of Jim Gold
by Ruthie & Alan Shor

Birthday of Michael Horowitz
by Ruthie & Alan Shor

Birthday of Carol Levy
by Ruthie & Alan Shor
Birthday of Mark Masinter
by Ruthie & Alan Shor
Birthday of Lori Ordiway
by Ruthie & Alan Shor

Social Justice Fund for Youth Education

Support of worthwhile educational causes for youth in need

Memory of Myron Ball
by Kitzi Ball
Memory of Peggy Jane Cohen Bennett
by Janet & Mitch Jacobs
Memory of Claire Greenberg
by Lotty Brodsky & Bobby Lyle
Memory of Elizabeth Greenman
by Suzi & Jack Greenman
Memory of Sol Mondell
by Cynthia & Allen Mondell
Memory of Barbara Rabin
by Lotty Brodsky & Bobby Lyle
Memory of Jerry Sandberg
by Susan Schy
Memory of Sandra Stein Weil
by Sharon & Irwin Kasser
by Lotty Brodsky & Bobby Lyle

Memory of Barbara Zale
by Shirley Tobolowsky
Birthday of Frieda Hudspeth
by Maddy & Mark Unterberg



YOUTH AND EARLY CHILDHOOD EDUCATION

William P. Budner Youth Library Fund

Purchases of Judaic books and publications for students

Memory of Barbara Bubis
by Jan Watson
Memory of Miriam Dorfman
by Roz & Art Kaplan
Memory of Henry N. Meyer
by Lynn & Bob Behrendt

Early Childhood Education Center (ECEC) Fund

Support of ECEC programs

Memory of Ronald Blum
by Carolyn Blum
Memory of Avelina Barbara Lipnick
by Kathy & David Lipnick
Memory of Gary Mann
by Gayle Johansen

Memory of Eva H. Rosenstock
by Toby Gruber
Memory of Barbara Zale
by Marcy & Michael Grossman
by Alyson, Joe, Katie, Becca & Lexi Ray
As a Contribution
by Joanna & Zachary Dreyfuss
Bat Mitzvah of Talia Fisher
by Sarah & Michael Fisher

Gina Rosenfield Levy Greene Family Camp Scholarship Fund

Financial assistance to families for Greene Family Camp

Memory of Arnold Aronson
by Phyllis & Phil Stoup
Memory of Rosalie Brown Bloom
by Jacque & Freddy Roberts
Memory of Jacob Herschel Bloom
by Jacque & Freddy Roberts
Memory of Annette Leff Rosenfield
by Phyllis & Phil Stoup
Memory of Mitzi Wells
by Bobbi & Jerry Wells
Memory of Herschel Wilonsky
by Phyllis & Phil Stoup
Speedy Recovery of Macki Ellenbogen

by Phyllis & Phil Stoup
Paul Lande Summer Camp Scholarship Fund
Scholarships for children to attend Jewish summer camp
Memory of Jolyn Rudelson
by Mindy & Rick Cohen

Metz Youth Fund
Scholarships for Jewish activities sponsored by Temple or other Jewish organizations

Memory of David Mayerson
by Bobbi & Jerry Wells
Memory of Adam Steinberg
by Karla & Larry Steinberg
Memory of Mitzi Wells
by Bobbi & Jerry Wells

David B. Shalom Religious Education Fund

Financial assistance for religious education for Temple members

Memory of Barbara Zale
by Amy & Richard Blum

Martin and Charlotte Weiss Religious School Fund

Scholarships for YL+E fees, books and additional expenses

Memory of Amelia Cristol Andres
by Carol & Robert Hirsh

by Shelley & Richard Hirsh
Memory of Betty Chaikner
by Lynn & Jay Staub

Youth Scholarship Fund
Financial assistance to families for participation in youth programs

Memory of James Faulkner
by Robin Kosberg & Mark Washofsky

Memory of Frances Porris
by Mindy & Rick Cohen

Memory of Eugenia Vulakh
by Ella Borodyansky

Memory of Sandra Stein Weil
by Robin Kosberg & Mark Washofsky

Conversion of Tina Orlowski
by Robin Kosberg & Mark Washofsky

Conversion of Tina Orlowski
by Robin Kosberg & Mark Washofsky



WRJ

Freda Gail Stern Social Justice Fund

Support of social action projects consistent with WRJ's mission

As a Contribution
by OriAnn Phillips

YES Fund of Sisterhood
Support of the Youth, Education and Service programs of Women of Reform Judaism

Memory of Jerome G. Franklin

by Marlene Franklin
Memory of Sanford Franklin

by Marlene Franklin
Memory of Jolyn Rudelson

by Miriam Cohen
by Phyllis & Marty Mills

Memory of Jessie Sackler
by Phyllis & Marty Mills

Memory of Eddie Segal
by Phyllis & Marty Mills

As a Contribution
by OriAnn Phillips

Yolanda Clark Youth Scholarship Fund

Provision of scholarships for immersive Jewish youth learning experiences

As a Contribution
by Rachel Chaput

by Deidra Cizon
by Bette Morchower

by OriAnn Phillips

CREATING
possibilities
TOGETHER 2021-2022
ANNUAL FUND

Please join our Temple family in generously supporting The Annual Fund, Temple's most important annual fundraising initiative. Let's continue Creating Possibilities Together today.

Make your gift today! tedallas.org/annualfund

The Dream Big Team



Nina Cortell, Bob Fine and Leslie and Bob Krakow



Ensuring
Our Future

TE150 celebration chairs Nina Cortell, Bob Fine and Leslie and Bob Krakow are building the blueprints for a magnificent 15 months of celebration and community.

Their personal histories range from being a convert to Judaism and child of German Jewish parents who fled Nazi Germany to fourth-generation Temple member and native New Yorker.

Whatever important initiatives Temple has been involved in over the past four decades, chances are that Nina Cortell and Bob Fine, and Leslie and Bob Krakow have been involved.

They've taught in religious school, participated on clergy searches, cultivated new Temple leadership, served as Temple officers, raised money and planned major celebrations. Close to their hearts are their families' journeys through preschool, b'nai mitzvah and Confirmation, and, for Nina and Bob, being a multigenerational ECEC family!

About Nina and Bob

Nina is a lifelong member of Temple and the daughter of German Jewish parents who escaped Nazi Germany. Bob's Temple journey began when he converted to Judaism in 1976 with Rabbi Gerald Klein of blessed memory.

Nina, a former Temple officer, helped develop an alternative Shabbat service in the '90s and served on a team in the early 2000s that laid the foundation for envisioning the Temple building of today. Bob chaired the then-named Preschool Committee and oversaw the transformation of the school that planted the seeds for the prominence of the Early Childhood Education Center today. He also served on the search committee for Rabbi Sheldon Zimmerman and has enjoyed seeing the embrace of Jews by Choice into the highest ranks of Temple leadership. He has been a leader in Temple's practice of The Conversation Project.

The two couples are chairing the celebrations for TE150, an exciting 15 months of special events and new initiatives that will launch this fall. They are working with an awesome group of co-chairs who will be introduced in later editions of the Window.

Temple is so grateful for the extraordinary and enduring leadership of Nina, Bob, Leslie and Bob. They shared their reflections on the months ahead with the Window, and we at Temple are eager to come together as a community to experience the exciting results of their planning and hard work.

About Leslie and Bob

Leslie is a native Dallasite and fourth-generation Temple member whose great-grandfather, Ludwig Philipson, was a Temple president. Bob grew up in suburban New York and moved to Dallas in 1981. Their volunteer commitment intensified about 10 years ago when they chaired the then-called Annual Campaign. Leslie served on the Nominating Committee and planned the celebration for the opening of Stern Chapel, and Bob served on the Engagement Task Force and is currently Temple's First Vice President.

In their professional lives, Leslie has worked for many years as both a volunteer and professional educator. Bob has been a practicing attorney for more than 40 years, nearly all of that time with Gibson, Dunn & Crutcher. Leslie and Bob were married by Rabbi David Stern in 1996, the same week that he became senior rabbi! They have two sons, Ben, 24, and Eli, 21.

What is the mission of the celebration and community experience of TE150?

The sesquicentennial celebration will encompass a 15-month long series of special events, projects and activities that will provide a joyous opportunity for us to celebrate our past, reflect the best of who we are, and inspire our future. Our planning is focused on our core values — social justice, community engagement, learning, worship, and Israel — with our goal being to enhance connections, honor our diversity, and make an impact in our community.

What can we expect to experience in each of the broad areas of the celebration portfolio?

Documenting Our History: This committee's goal is to both honor our history and inspire our future through the lessons and achievements of our remarkable past. The committee seeks to create a living archive that will include, among other things, a multimedia timeline; an interactive map that will show significant connections among the city of Dallas and Temple; a beautiful photo exhibit of members and staff; and a visual feature showing a year in the life of our community garden.

Torah and Worship: All of our celebrations will be illuminated with the richness of our sacred Torah and the power of communal prayer.

Anchor Events: Although there will be special events and programming throughout the 15 months, a dedicated group of lay volunteers is busy planning three major anchor components of TE150. The first anchor, in October of this year, will be a celebration focused on Jewish values and justice related to food, including working to eradicate hunger and welcoming others to our tables. It will kick off with a very special Sukkot Shabbat service and dinner on Oct. 14. Beginning that night and continuing for the next several weeks, we will enjoy delicious food that reflects the great diversity of our rich Ashkenazi and Sephardic cultures. We also will have the opportunity to learn about and discuss many food-related issues, including health and nutrition, food insecurity, and sustainability. We will celebrate our own devoted gardeners and engage with the broader community beyond our walls.

The second major anchor is a celebration of the arts in the spring of 2023, and its power to build understanding among people, while also connecting us to the past. It will include partnerships with a number of leading local arts organizations in Dallas. We will of course celebrate our wonderful Temple Emanuel music heritage and plans are under way for an immersive community art experience that will tell our story in an exciting and fresh way.

Our final anchor celebration will occur in the Fall of 2023, when we will rededicate ourselves to our core values and collectively envision the future of Temple.

Social Justice: Temple's legacy of social justice will infuse all our efforts, and be deeply embedded in the anchor events and the Documenting Our History project. We are also working on an exciting initiative that we'll be able to share more details on in the months to come.

Such an amazing start! Tell us briefly about the process of pulling together these fabulous ideas.

The planning has been a years-long process that has included brainstorming amongst a wide array of Temple members, clergy and staff. We were asked to "dream big," and we did! More recently, the programming has been guided by our magnificent committee chairs who have brought new ideas, creativity, and excitement to the process. Under their leadership, enhanced by the committee members they have engaged, we have gone from the drawing board to plans for implementation — it is an exciting time! We are eager to see all of the hard work of so many come to fruition in the months ahead and be enjoyed by our Temple community.

What has been your favorite part of the TE150 journey so far?

Nina and Bob: The opportunity to work with so many inspiring, talented Temple members in a joint mission to honor, and bring to life, Temple's rich history, so that we may inspire and ensure Temple's future.

Leslie and Bob: The TE150 planning reflects the very things that make Temple a magnificent congregation with such a rich history—highly committed and talented lay volunteers generously giving of their time and working in close collaboration with our incredible staff and clergy. It has been great to see the work progress, and we are beyond excited to see the celebration unfold.

A to Z Awesome

ELIZABETH ASEN AND SOPHIE ZUCKERMAN
GIVE THUMBS UP TO THE TEMPLE EMANU-EL ANNUAL FUND

They're both young moms with plenty of responsibilities in their lives. For Elizabeth Fields Asen and Sophie Levy Zuckerman, the commitment to Temple runs deep. The only answer that ever occurred to them when considering Temple leadership was an enthusiastic yes!

Elizabeth Fields Asen

'TEMPLE WAS ALWAYS A CONSTANT IN MY LIFE.'

Elizabeth grew up at Temple and moved back in 2020, after living in the northeast for 11 years. She and her husband, Josh, are the parents of Lily.

What is your connection to Temple?

I grew up at Temple. My parents, grandparents, and great-grandparents all modeled the importance of giving back and playing an active role in the shaping and development of Temple.

Why did you say yes to the Annual Fund?

I moved back to Dallas in 2020 after living in the northeast for 11 years. Going to Temple has been like coming home. The programs and activities I do with my daughter at Temple have served as a way for us both to make friendships and feel a part of a community. We go to Temple one to two days a week to play, sing, worship, and socialize in the Together Time program. We both leave feeling energized and fulfilled. These feelings of excitement propel me to give back to the place that my family loves.

Why do you think it's so important for people in their 20s and 30s to support Temple Emanu-El?

When I reflect upon my childhood, Temple was always a constant in my life. I want my daughter to experience the same feelings of belonging and embrace that I felt and continue to feel when we participate in Temple programming. I think that young adulthood is a great time to start to dip your toes in supporting organizations.



Sophie Levy Zuckerman

'NOW IT'S OUR TURN...'

Sophie is a lifelong Temple member. She and her husband, Eric, are the parents of two sons. She works for her family business, NCH Corporation and shares seasonal recipes on her website (sophoodie.com)

How did you get involved at Temple?

Mary Lee [Broder] called me . As a lifelong congregant, I grew up enjoying all that Temple had to offer and now I love being on the other side of things by helping.

What made you say yes to the Annual Fund?

I can be super shy when it comes to asking for money, but I realized this is a rewarding way to step out of my comfort zone. Also, who can say no to Mary Lee and Nikki Gibson?

Why do you think it's so important for people in their 20s and 30s to support Temple Emanu-El?

Most of us have grown up receiving so much love, care, and attention from Temple whether it be from religious school, attending children's services, or making memories on the annual Temple youth ski trip. As young adults, it's a place to find friends as we navigate young adulthood in our 20s and having a wonderful place to send our littlest ones. Now it's our turn to ensure that the ship keeps running smoothly.



The Window (USPS #017-824) is published six times per year by Temple Emanu-El Congregation, 8500 Hillcrest Road, Dallas, TX 75225-4204. Periodicals Postage Paid at Dallas, Texas.

POSTMASTER, send address changes to:
Temple Emanu-El Window
8500 Hillcrest Road
Dallas, Texas 75225-4204.

PERIODICALS
Time Sensitive Material



...and the youth shall see visions,
And our hopes shall rise up to the sky.
We must live for today;
we must build for tomorrow.
Give us time, give us strength,
give us life.

Debbie Friedman