

The Window

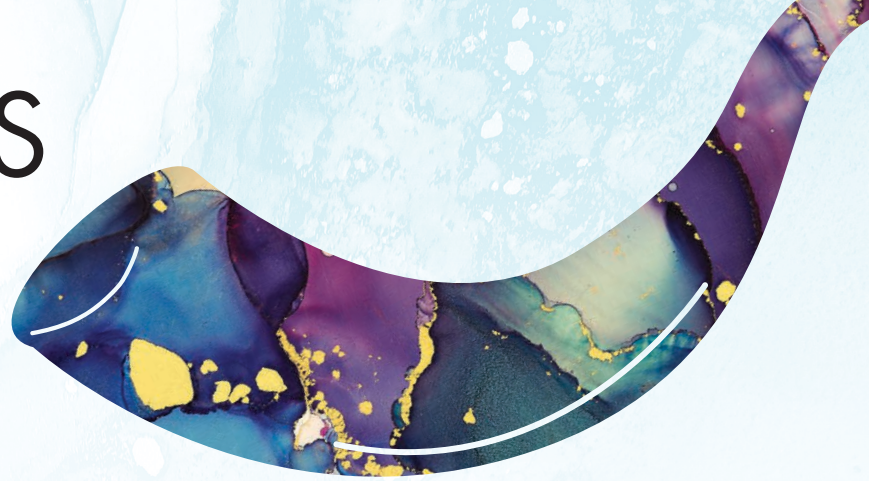
In the ZONE

Exciting Changes for
High Holy Days

Reel Deal: Cinema Emanu-El

Fun in the Sun at Camp

CONTENTS



PRAYER AND SPIRITUALITY

A Message from Rabbi David Stern	3
Interested in Mussar?	4
Welcoming New Members	4
In the Torah	4
Tishah B'Av	4
High Holy Days 5785	5



SOCIAL JUSTICE

Youth Learning + Engagement	19
Tzedakah Report	



LEARNING

Reflections from our Heads of School	20
Fun in the Sun	22



ISRAEL

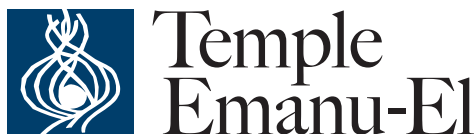
Waving the Blue & White	23
-------------------------	----



COMMUNITY

Voices of Sh'ma Emanu-El	9
ATiD Burgers & Beer	9
Cinema Emanu-El Returns	10
Celebration and Remembrance	12
New Member Spotlight	15
Tributes	16

About the cover: Adam Ordway is living his best life at Camp Emanu-El!



Founded in 1872
8500 Hillcrest Road | Dallas, Texas 75225
214.706.0000 | tedallas.org

Temple President
Bob Krakow

Executive Director
Meredith J. Fried

Clergy
Rabbi David E. Stern
Rabbi Debra J. Robbins
Cantor Vicky Glikin
Rabbi Amy Rossel
Rabbi Kimberly Herzog Cohen
Cantor Leslie Niren
Rabbi Michael Lewis

Department of
Congregational Advancement
Sandy Diamond, Senior Director

The Window
Connie Dufner, Senior Director
of Communications
Ann Wilson, graphic designer
Livia Stevenson, writer
Ilana Paikoff, contributing writer

Blessings for Beauty and Hope in a Flawed World



Rabbi David Stern

Our rich Jewish tradition overflows with blessings. Tractate Berakhot of the Babylonian Talmud (500 C.E.) is a particular treasure trove of instruction for gratitude: blessings to be said over foods, flowers, fragrances, oils, spices, animals, deeds, people, natural phenomena and more. From rainbows to oceans, Torah

scholars to kings, monkeys to elephants, beautiful people to not-so-beautiful people, the Talmud has a blessing for it.

Two of my favorites from Tractate Berakhot have to do with beauty and blossoms. The blessing for a beautiful creation, whether a person, an animal, or a tree, is “Blessed are You, Adonai our God, *shehkacha lo b’olamo* — Whose world has such beauty in it” (BT Berakhot 58b). It gives us a simple way of acknowledging the gift of beauty in our lives.

The blessing on blossoming trees comes earlier in the tractate (BT Berakhot 43b): “Rav Yehuda said: One who goes out during Nisan and sees trees that are blossoming recites: ‘Blessed are you, Adonai our God, *sheh lo chiser b’olamo*’ — Who has withheld nothing from the world.”

The first blessing is an acknowledgment of the beauty woven into the fabric of creation. I find the second one more challenging: the idea of a God “who has withheld nothing from the world,” the counter-intuitive notion that the world lacks nothing.

How could we possibly make that statement? After Oct. 7 and in the midst of war, as antisemitism and hatred mount, as recrimination and polarization rule the day? It seems the world lacks everything: peace, understanding, safety, sanity.

Yet maybe that is why we need this blessing now more than ever. First, because as observers as diverse as Steven Pinker, Jonathan Haidt and Nicholas Kristof have noted, things are not quite as bad as we now reflexively believe. In Kristof’s words, “The

truth is that if you had to pick a time to be alive in the past few hundred thousand years of human history, it would probably be now.” Advances in science and medicine have saved countless lives and global poverty has declined dramatically. One million fewer children will die in 2024 than in 2016, extreme poverty and human trafficking are in decline and adult literacy is on the rise. AIDS has become a solvable world problem.

Given our deep and understandable anxieties of the moment, we might lose sight of some of these broader trends. We might even see the big picture, but argue that it is rendered irrelevant by more proximate crises like the threat to democracy. We might contend that macro improvements do not obviate daily injustice, poverty and pain. We might insist that despair is justified.

The problem is that despair is also dangerous. When our distress paralyzes us or promotes fantasies of withdrawing from the fray, when our polarization blinds us to centrism and complexity, we lose the will and the vision to tackle the problems that beset our Jewish community, our nation and our world.

And that is where Rabbi Yehuda’s blessing comes in — to challenge us to a faith that transcends despair. “God’s world lacks nothing”: Can I own the belief that the world has what it needs — not just enough material goods (however unjustly distributed still), but enough wisdom, enough creativity, enough decency to continue to fulfill its potential as divine creation? Can I affirm that gifts abound, not as a path to evading personal responsibility, but as a challenge to make those gifts available to the too many who suffer in want? Can I say that the promise of peace is ever-present, though as flawed human beings we trample it in the dust on fields of battle and in toxic discourse? Can I say that the world lacks nothing, not as justification for blaming the have-nots for what they lack, but as a galvanizing reminder of the work ahead for us all?

According to the Talmud, we only say “Blessed are You... Who has withheld nothing from the world” upon seeing the first blossoming tree of the season. But with apologies to Rav Yehudah, I am thinking of saying it each day this summer as both reminder and affirmation: of gratitude, of responsibility and of hope.

Give Mussar a Try

Temple Emanu-El is a national leader in the practice of Mussar, a Jewish practice of self-discovery and character growth from the 18th century. While many of our members practice on their own, we are now hoping to start a new Temple group for beginners, or those who'd like to reboot their practice, facilitated by Michael Selz.

Mussar is a course of study of *middot* (character traits) such as trust, honor, humility, and patience. Students read materials to discuss in group sessions called *va'ads*. They also study in *chevruta*, with one other person, on the weeks between the *va'ad* sessions. Many find that the practice brings greater self-awareness and even sparks positive changes in how you show up in the world.

If you want to join a *va'ad* or learn more about Mussar, please contact Sammy Weyser, Engagement Event Manager, sweyser@tedallas.org.

Easy as 1-2-3!

Let's welcome our new members at three Shabbat services this summer that show the warmth, variety and beauty of Temple prayer.

All-In Shabbat and Congregational Dinner

August 23 | 6PM | Stern Chapel

An all-ages friendly service with a relaxed vibe followed by a picnic-style pizza dinner. (Note the earlier start time to accommodate families with young children!)

New Member Shabbat

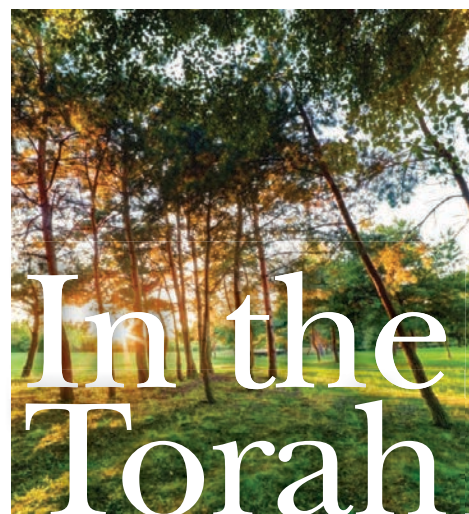
September 6 | 6:15PM | Stern Chapel

Our weekly coming together as a congregation, geared toward adults and welcoming to all. New members are invited to join at 5:30PM for a special pre-oneg.

New Member Tot Shabbat

September 14 | 9AM | Haas Amphitheater and Ratner Courtyard

For families with children up to age 5, a short, joyous, lively service crafted for our youngest members.



Weekly Readings for July/August 2024

July 5 – 6: Korach,
Numbers 16:1 – 18:32

July 12 – 13: Chukat,
Numbers 19:1 – 22:1

July 19 – 20: Balak,
Numbers 22:2 – 25:9

July 26 – 27: Pinchas,
Numbers 25:10 – 30:1

August 2 – 3: Matot/Mas-ei,
Numbers 30:2 – 36:13

August 9 – 10: D'varim,
Deuteronomy 1:1 – 3:12

August 16 – 17: Va-et'chanan,
Deuteronomy 3:23 – 7:11

August 23 – 24: Eikev,
Deuteronomy 7:12 – 11:25

August 30 – 31: Re'eh,
Deuteronomy 11:26 – 16:17



TISHAH B'AV

August 12 | 7PM | Stern Chapel

Tishah B'Av, the ninth day of the Hebrew month of Av, commemorates the destruction of both ancient temples of Jerusalem. This year's service will be led by Rabbi Debra Robbins and Cantor Hallie Weiner.



HIGH HOLY DAYS

2024 / 5785

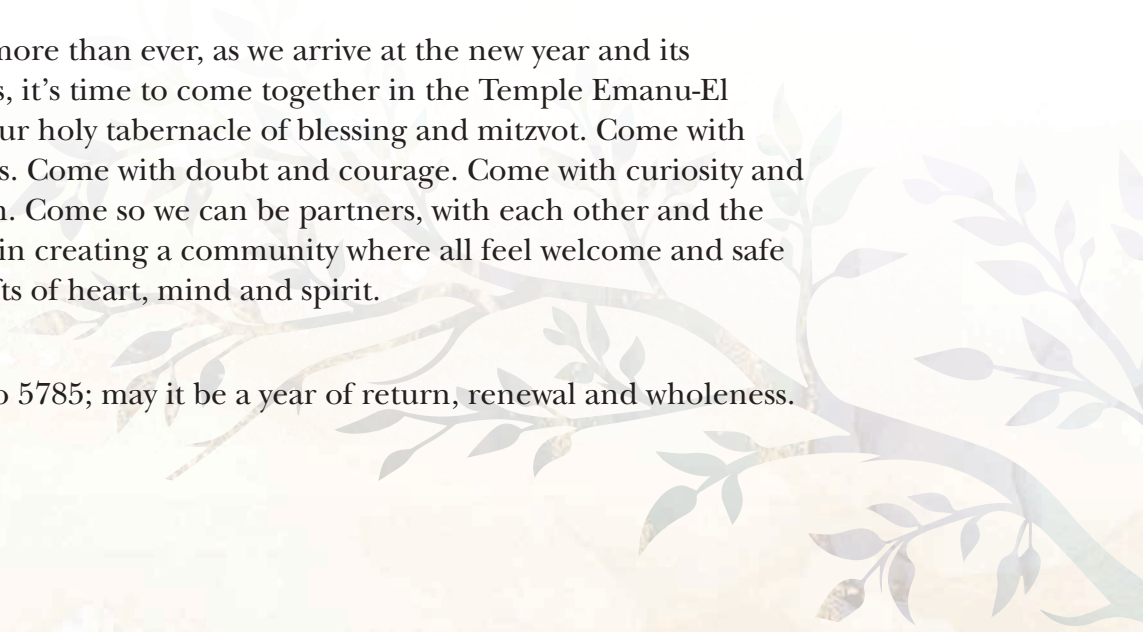
Enter the Mishkan

As 5785 draws near, we are especially grateful for Temple Emanu-El's presence as our mishkan — a haven of hope, a wellspring of strength and a source of light for our lives and our world.

It's been a difficult year for the Jewish people, since the joy and promise of new beginnings were shattered on Oct. 7. We experienced a wide range of emotions in response to worldwide events and our own more personal experiences. And while it may be hard to talk about some issues and feelings, we can come together in the mishkan, and here be seen and heard, learn and reflect, and pray for peace for ourselves, for others and our planet.

This year, more than ever, as we arrive at the new year and its possibilities, it's time to come together in the Temple Emanu-El mishkan, our holy tabernacle of blessing and mitzvot. Come with open hearts. Come with doubt and courage. Come with curiosity and compassion. Come so we can be partners, with each other and the Holy One, in creating a community where all feel welcome and safe to share gifts of heart, mind and spirit.

Welcome to 5785; may it be a year of return, renewal and wholeness.





New This Year

We are pleased to introduce significant schedule changes that reflect how our members join together in prayer, offer better opportunities for families and provide greater opportunities to learn with our clergy. Temple Emanu-El clergy and staff, in close partnership with the High Holy Days Advisory Team, have worked for many months to create meaningful, spiritual and connective experiences for all members. See below for schedule changes, highlights and the philosophy behind them.

ROSH HASHANAH DAY

- We are continuing last year's practice of offering two daytime options for prayer, one in Olan Sanctuary at 9:30AM and one in Stern Chapel at 1PM.

Philosophy: These changes recognize and reorganize how our members engage in High Holy Days services, especially since 2020. The number of participants remains the same, but our community now chooses from various modalities. Some only come in person, some only participate online, and many choose both in-person and online attendance. We continue offering two daytime options, in two different styles, instead of repeating the morning service as we have done historically.

ROSH HASHANAH AND YOM KIPPUR

- The Tots and Their Families service will begin at 9AM.
- The Family Service will begin at 10:30AM.

Philosophy: Based on feedback from families, the service times have been adjusted to be better suited to specific age ranges. We are excited that the time shifts allow for a cantor to participate in both services.

YOM KIPPUR

- A single Kol Nidre service will begin at 7:30PM.
- A single morning service will begin at 10AM.
- Temple clergy will lead expanded spiritual and study experiences from 12:30-2:15PM.
- The Prayer and Music of the Heart service will begin at 3PM.
- Yizkor will begin at 4:30PM.
- N'ilah and Havdalah will begin at 5:30PM.

Philosophy: Identifying the time for our single Kol Nidre service has been an ongoing conversation among clergy, staff and lay leadership. Our goal is to balance the traditional practice of eating before Kol Nidre with our community's diverse needs and historical experiences. We recognize the logistical challenges this presents to many and encourage all to create new traditions for this most sacred of days. During the day, we hope more members will now spend the day engaged in a variety of spiritual practices that help do the sacred work of the season in different ways. We also offer maximum flexibility with livestreaming of most services; recordings are available once the services have concluded.

High Holy Days Schedule

ELUL AND SELICHOT

We begin to prepare for Rosh Hashanah, also known as the birthday of the world, with two guest scholars who will guide us in exploring creation and protecting the environment.

Daniel Cohan, Ph.D.

Sept. 13-14: The Shabbat evening service will include the Schlinger Ethics Symposium, featuring Daniel Cohan, Ph.D., a climate change specialist. Dr. Cohan will also lead a lunch-and-learn book talk following the Shabbat morning service.

Rabbi Mike Comins

Sept. 27-28: Selichot with Rabbi Mike Comins, founder of the Center for Jewish Wildlife Spiritual and an acclaimed leader in exploring the relationship between Judaism and the natural world.

Psalms 27: Online class with Rabbi Debra Robbins

Sept. 4, 11, 18, 25; October 9, 16, 23: Psalm 27, with its 14 verses and myriad emotions, invites us to consider our place in God's creation and how we, like our Creator, can engage in acts of transformation and repair. This Elul marks the sixth season of "Opening Your Heart with Psalm 27" and we return to these words for inspiration, courage and hope.

ROSH HASHANAH OCTOBER 2-3

Erev Rosh Hashanah

6PM: Evening Service, Olan Sanctuary and online*

8PM: ATiD service, Stern Chapel

For 20s and 30s, oneg reception following

Rosh Hashanah Day

9AM: Tot Service, Stern Chapel

Ages birth through kindergarten, including a blessing for all children born since last Rosh Hashanah.

9:30AM: Morning Service, Olan Sanctuary

10:30AM: Family Service, Stern Chapel
Geared to families with children in grades K-5; siblings of any age are welcome.

1PM: Afternoon Service, Stern Chapel
Experiential service, introduced in 2023, combines traditional Rosh Hashanah prayer with poetry, reflection and contemporary music. (A pre-service oneg will be held at noon for ATiD 20s and 30s.)

Tashlich

Tashlich is the ritual tossing of sins and regrets into flowing water. We will host multiple observances throughout Dallas. While some are designed for certain groups, all are open to everyone. We request reservations (available on July 25) so that our lay facilitators will have enough materials for everyone.

Shabbat October 18-19

Bring on Shabbat and Sukkot joy with MAC artist Jacob "Spike" Kraus' irresistible blend of folk, pop and rock-inspired musicality.

October 18

6PM: All-In Shabbat with Jacob "Spike" Kraus, Temple sukkah, followed by a congregational dinner

October 19

9AM: Tot Shabbat

12PM: Shabbat Nosh

SHABBAT SHUVAH OCTOBER 4-5

The Shabbat of Return features inspirational music, reflection, silence and study.

KEVER AVOT OCTOBER 6

10:30AM: Temple Emanu-El Cemetery and Mausoleum, in person only
Join the clergy and other members in this service of reflection and memory.

YOM KIPPUR OCTOBER 11-12

Kol Nidre

7:30PM: Evening Service, Olan Sanctuary

Yom Kippur Day

9AM: Tots and Their Families, Stern Chapel

10AM: Morning Service, Olan Sanctuary

10:30AM: Family Service, Stern Chapel

12:30-2:15PM: Expanding the Tent with our Clergy — Study, Reflection and Spirit

3PM: Prayer and Music of the Heart, Olan Sanctuary

4:30PM: Yizkor, Olan Sanctuary

5:30PM: N'ilah and Havdalah, Olan Sanctuary, followed by a congregational break-the-fast

**All services will be livestreamed unless marked as "in-person only"*

SUKKOT OCTOBER 17-23

October 17

10:30AM: Morning and Festival service, Temple sukkah, in person only

SIMCHAT TORAH OCTOBER 23-24

October 23

6PM: This joyful and energetic service will feature Consecration, Torah readings by eighth-graders and prayer book presentations to b'nai mitzvah students.

October 24

10:30AM: Morning and Festival service with Yizkor



HIGH HOLY DAYS REGISTRATION

Begins July 25

All registration for High Holy Days services will be conducted online only. Temple staff and volunteers will be available to help anyone who needs technical assistance. We look forward to a pleasant and seamless registration experience. For information, call Temple's main line at 214.706.0000 or email hhd@tedallas.org.

BOOK OF REMEMBRANCE

Admissions accepted between July 25 and August 30

Temple will offer the Book of Remembrance for Yom Kippur Yizkor in print and online this year. Please submit names of the loved ones you'd like to include by scanning the QR code below and filling out the form beginning on July 25 or by contacting Mindy Butler at 214.706.0000 or mbutler@tedallas.org. It is customary to remember loved ones at this time of year and many choose to honor them with a *nedavah*, or gift, to Temple in their memories.



HUNGER RELIEF

The High Holy Days Hunger Relief Drive will resume in our annual effort to help those in need at this sacred time of year. We welcome donations of nonperishable items to our collection truck from Oct. 1-19. The food will then be distributed to North Dallas Shared Ministries. Cash donations are also accepted at tedallas.org/hungerrelief or by mailing a check to Temple indicating the Hunger Relief Fund as the recipient.

LIVESTREAMING

It's easy to participate in Temple's beautiful online services. Please visit the homepage of tedallas.org, and you'll find prominent links to the High Holy Days services. If you want to watch them on your own time, recordings will be available shortly after the conclusion of the service.

HIGH HOLY DAY RECIPROCITY

If you or your family will be attending High Holy Days services at another congregation, please contact Alexandra Horn, Director of Membership, at hhd@tedallas.org and we will help get the information you need.



CHILD CARE

Temple hopes to offer child care at High Holy Days for the first time in many years. Based on feedback from families and in consultation with the High Holy Days Advisory Team, we are pleased to provide care if there is enough interest from families. The cost is \$18 per child, per service. Payment will be collected when you register beginning July 25. In the event that not enough people sign up, you will be notified by Sept. 3 and your money will be refunded.



SH'MA EMANU-EL

A New Year of Fun and Connection

Sh'ma Emanu-El is looking forward to another great year of making new friends, exploring common interests and growing together Jewishly. Groups are forming over the summer and will start meeting in September.

This is a great time to get involved. All you need to do is decide on a topic for your group and identify a leader. Then reach out to Temple and we will help you recruit members via the Temple website. Each group listing includes a description, timing of meetings and a contact for more information.

There are currently 25 groups, including 13 actively seeking members and we look forward to adding new groups. We can't wait for you to join our growing roster of groups building meaningful relationships through Temple! See below for reflections from current participants about their groups.

Contact: Shira Stevenson, Director of Small Groups and Diversity, sstevenson@tedallas.org

Wine Tasting: Terri Rubin

We connected with individuals who wouldn't typically be part of our social circle. Beyond our regular monthly gatherings, we now have informal get-togethers because we genuinely enjoy each other's company. I wholeheartedly recommend seeking out similar groups to broaden your network of Temple friends!

Mahjong: Betsy Rosen

As a newish Temple member, co-coordinating the Mahjong Sh'ma group was a meaningful way to connect with fellow members who are friends. Our shared fondness for mahjong brought together several members who didn't previously know each other. I looked forward to our monthly "Sh'mahjong" meetings in a supportive environment. The bonus was improving my game!



Fabulous Fifties turned Savvy Sixties: Kerry Silver and Michael Selz

Our Sh'ma group began as the Fabulous 50s and 10 years later, we are about to age out of the Savvy 60s. Although we didn't all know one another in the beginning, we've formed significant and lasting friendships through the years. Our regular cadence of monthly Sunday potluck lunch meetings — hosted in members' homes — has ensured we protect the dates. We have nearly full participation every meeting! We have supported one another through celebrations and loss, the seasons and Jewish holidays. We've even planned a fabulous weekend Shabbaton for the past several years. Our Sh'ma group is completely part of our individual experience at Temple — bringing connection to Temple and one another outside the building, just as Rabbi Asher Knight intended in the beginning.

GROUPS FORMING AND SEEKING MEMBERS

Single Moms
Cultural Events
Interfaith Couples

Social Justice
Hiking
Wine Tasting
Music Learners
Young Families |
4 and under
Wise Aging
Spanish Speakers

Jewish Music
Singles Exploring
Spirituality

For more details on the groups:



ATiD
20s and 30s at Temple
Burgers & Beer

August 25 | 4PM

Come together to schmooze with ATiD and hear about the upcoming year. Gluten-free and vegetarian options will be available.

Register at tedallas.org/events



Cinema Emanu-El

Four consecutive Tuesdays

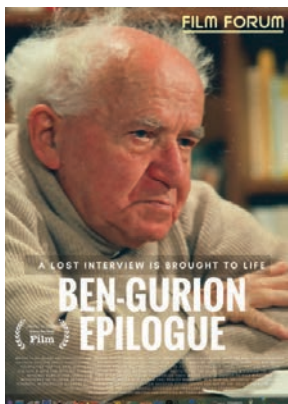
beginning July 9 at 7PM

Tobian Auditorium

\$5 PER FILM OR \$20 SERIES PASS

Register: tedallas.org/events

Contact: Sammy Weyser, sweyser@tedallas.org

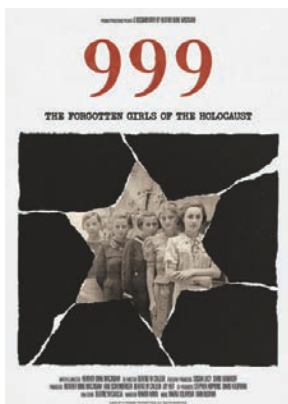


JULY 9 | Ben-Gurion Epilogue

This documentary features a 1968 interview with Israel's first prime minister, at age 82, from his desert home in Sde Boker. His crucial role in the development of the young country and his military and political legacy have resonance today as Israel grapples with the Oct. 7 attacks and their aftermath. Presented in partnership with Americans for Ben-Gurion University, Dallas Chapter. English, with subtitles.



SCAN TO
WATCH THE
TRAILER



JULY 16 | 999: The Forgotten Girls of the Holocaust

In 1942, 999 Jewish Slovak girls were lured into government service with the promise they'd be helping their families by working in a shoe factory. They became the first official Jewish transport to Auschwitz. Survivors of that transport share their stories in this gripping documentary. English, with subtitles.



SCAN TO
WATCH THE
TRAILER

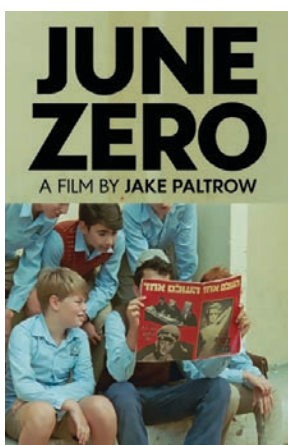


JULY 23 | Farewell, Mr. Haffmann

You'll be swept up in this tense historical drama set in the German occupation of France, based on a play by Jean-Philippe Daguerre. Jewish jeweler Joseph Haffman leaves his shop in the care of his assistant Mercier as he tries to flee to Switzerland. He ends up hiding in his own basement when his exit is blocked and he finds refuge with Mercier. French, with subtitles.



SCAN TO
WATCH THE
TRAILER



JULY 30 | June Zero

View the 1961 trial of Nazi war criminal Adolf Eichmann from the perspectives of his Jewish Moroccan prison guard, an Israeli police investigator who's also a Holocaust survivor and a 13-year-old Libyan immigrant. Hebrew, with subtitles.



SCAN TO
WATCH THE
TRAILER

Celebration and Remembrance

Compiled by Livia Stevenson

BECOMING B'NAI MITZVAH



Shayna Reister
May 18
Daughter of Anya and Rich Reister
Parish Episcopal School
Tikkun Olam: LemonAide Society



Blake Gordon
August 31
Daughter of Lauren and Phil Gordon
Coyle Middle School
Tikkun Olam: Personal items for foster children



Kate Greenberg
August 24
Daughter of Martha and Steve Greenberg
The Episcopal School of Dallas
Tikkun Olam: Vogel Alcove



Maya Belle Feldman
August 31
Daughter of Susan and Matthew Feldman
Shelton School
Tikkun Olam: LemonAide Society, Doodle Rock Rescue, CHEW Animal Clinic, and Shelton School



Olivia Gray
August 24
Daughter of Brandon and Ginafer Gray
International Leadership School
Tikkun Olam: Jill Stone Community Garden

B'NAI MITZVAH SPOTLIGHT: PIPER HEDDERICH

Piper Hedderich, who became a bat mitzvah on April 13, raised over \$3,000 to donate to the Jill Stone Community Garden and spent time volunteering and joyfully getting her hands dirty!

“My first experience in the garden was as an elective on Sunday mornings during YL+E. I chose the garden for my mitzvah project because it is a big part of Temple and sounded like a fun way to help grow the community,” she says. Piper and her family came together to learn how to plant, grow, and harvest different plants, including tomatoes, cucumbers, peppers and kale. At the end of the project, they toured the food pantry and donated produce. “My favorite memory was being able to see the different plants grow, and I also enjoyed feeding a grub to the chickens who call the garden home.”



CONVERSIONS



Neil Kaufman



Laura Pietzsch

NEW AND RETURNING MEMBERS

Jon Bakhshian, Shea Geyer and Ben Bakhshian
Blake Bergman
Scott Bruennig and Annie Rapaport
Andrew, Lucy, Vivienne and Elle Gardner
Edward and Nell Geller
Mike and Mendy Halsted
Ira and Lisa Kravitz
Jared, Ashley and Justin Lubetkin
Clea Mattingly, Bryan Jester, Ava McKelvie, Sophie and Mason Jester
Stephen and Anne Music
Laura Pietzsch
Martin Pomper, Jennifer Coughlin, Jonathan, Benjamin and Lana Pomper
Eric, Brooke and Henry Rosenstock
Jeremy, Jenny, Abigail and Ryan Rossel
Scott Streit

WEDDINGS



Andrew Hattersley and Sarah Keys



Kendyl Drayer and Joel Braby



Jessica Kruger and Neil Kaufman



Cassidy Langill and Megan Sims

IN MEMORIAM

Bill Berry

Husband of Fran Berry
 Father of Lisa Berry, William K. Berry, Darlene Moser and Leslie Torok
 Brother of Jack Berry

Ted Bogart

Husband of Marsha Bogart
 Father of Philip Bogart, Annie Kam and Susan Sweet
 Brother of Lynne Bogart

Murray Cohen

Husband of Sharon Cohen
 Father of Mark Cohen and Michael Cohen

Eli Davidsohn

Father of Jordana Bernstein, Ethan Davidsohn, Reuben Davidsohn and Amy Doty
 Brother of Brigitt Isenhour

Alan Dreeben

Husband of Barbara Dreeben,
 Father of Paige Sachs, Lisa Sechler and Allison Zeller
 Brother of Hope Dreeben and Oren Dreeben

Adrienne Epstein

Mother of Robb Steinberg

Francine Feuerstein

Sister of Sharon Taub

Dr. Marvin Gerard

Husband of Eunice Gerard
 Father of Ondria Gadd, Bret Gerard, Cameron Gerard, Clay Gerard and Quin Gerard

Laurie Gidlow

Wife of Robert Gidlow
 Mother of Hillary Levy and Mindy Rudisill

Dell Jane Kaplan

Mother of Risa Liken

Mark Kolodny

Brother of Jamie Tonkon

William Levy

Father of Allison Levy

Major Wendell Payne McCoskey

Father of Randy McCoskey, Robert McCoskey and Rebecca Sandifer

Annette Morganstern

Wife of Arthur Leon Morganstern
 Mother of Rhoni Golden and Debby Jones

Steve Oppenheimer

Husband of Audrey Pepper
 Father of Graham Oppenheimer
 Son of Irene and Larry Oppenheimer
 Brother of Lisa Kleinman and Nancy Laster

Roslyn Polakoff

Mother of Lee Adam Polakoff and Deena Fay Polakoff (z'l)

Marilyn Rich

Mother of Nicole Earich, Alan Rich and Robert Rich

Dr. Jack Rosenberg

Husband of Marjorie Sarasin
 Father of Bonnie Rosenberg and Lewis Rosenberg
 Brother of Marsha Casey and Dr. Martin Rosenberg

Joni Ross

Wife of Barry Ross
 Mother of Tory Ross

Roohi Sabeti

Mother of Armin Sabeti and Ramin Sabeti
 Sister of Maneucherhr Onidi

Jim Schendle

Father of Andrew Schendle, Jason Schendle and Matt Schendle
 Brother of H.I. Schendle and Janet Finegold
 Sidney "Sid" Stahl
 Father of Cathy Golden and Lori Stahl

Seymour Thum

Father of Sharon Bowers, Andrea Cohen, Brian Thum and Michael Thum

Stephen Louis Burtis Vogel

Son of Maguerite Burtis and Peter Vogel
 Brother of John Paul Burtis Vogel

Edith Falk Zinn

Sister of Rose Watel

BABY NAMINGS



Rose Leona Bryan
 Daughter of Haley and Jordan Bryan
 Granddaughter of Mendy and Michael Halsted
 Great-granddaughter of Minnette Klein



Grace Evyleen David
 Daughter of Marketa and Barton David



Vivienne Vale Gardner and Elle Andrews Gardner
 Daughters of Lucy and Andrew Gardner



Leo Wolf Goldman
 Son of Carly and Scott Goldman
 Brother of Beau and Ruby Goldman
 Grandson of Susie and Joel Litman



Murray Francis Gould
 Son of Elizabeth and Beau Gould



Miles Lee Stein Genecov
 Son of Breanna and Adam Genecov
 Grandson of Lisa and Jeff Genecov



Harrison McCluskey (pictured on left)
 Son of Hilary and Riley McCluskey
 Grandson of Patsy and Tom Fagadau
Benjamin Kaye (pictured on right)
 Son of Hannah and Matt Kaye
 Grandson of Patsy and Tom Fagadau



Hannah Danielle Paull
 Daughter of Elena and Andrew Paull
 Sister of Micah Paull
 Granddaughter of Connie and Ed Dufner



Winnie Jo Silverman
 Daughter of Taylor and Samuel Silverman
 Sister of Stevie Pearl

Rose Block Levy (not pictured)
 Daughter of Liz and Joe Levy

NEW MEMBER SPOTLIGHT

By Ilana Paikoff

Fifteen new member households joined the Temple family in May and June. New members Mendy and Mike Halsted are delighted to join their multigenerational family here at Temple. *B'ruchim habaim*, welcome y'all!

Mendy and Mike Halsted

Mike and Mendy Halsted met and were married in Dallas, and moved to Omaha and raised their family there for 33 years. We're so lucky that they're back in Dallas, and new members at Temple Emanu-El.

Mendy, a Dallas native, grew up at Temple, became bat mitzvah in 1973 and was confirmed in 1976. She attended UT-Austin and worked as a court reporter, paralegal and real estate agent.

Mike was raised in Omaha and attended St. Olaf College in Minnesota. He returned to Omaha for medical school and then to Dallas in 1984 for his internship, residency and fellowship training in Ophthalmology at UT-Southwestern.

The couple met through a mutual friend in Dallas and were married in 1989. They moved to Omaha, where they raised their son Max and daughter Haley. Mike was a member of a group of ophthalmology practitioners for 33 years. Mendy loved being a stay-at-home mom, being involved with the kids' many activities and volunteer work.

They moved back to Dallas a few years ago when Mike retired from private practice and accepted a position as a staff ophthalmologist at Dallas VA Medical Center, allowing him to continue to see patients and teach resident physicians. They enjoy being closer to Mendy's mom, Minnette Rose Klein, sister Celia Rose Saunders and their extended family.

Daughter Haley and son-in-law Jordan Bryan live in Dallas as well, and they just welcomed daughter Rose into their family. (See opposite page.) Max and Katty Halsted live in New Jersey with their daughter, Willa Louise.

Mike converted to Judaism in 2009 and celebrated becoming an adult bar mitzvah at Temple Israel in Omaha in 2011. He was involved in lay leadership and ultimately served as the first Jew-by-choice president of the congregation.

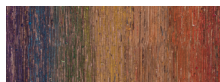


Mendy and Mike love spending time with family and friends and are dog lovers who recently rescued their third boxer, Hazel (pictured above).

They look forward to exploring Temple Emanu-El's adult learning opportunities, Women of Reform Judaism and Brotherhood in the coming months, meeting other new members and exploring everything Temple has to offer.

"We are thrilled to be members of Temple and are looking forward to many years of activities, service and friendship. Temple is only a few blocks from our home so we are excited about having activities so close," says Mendy.

Gifts of Memory, Honor and Gratitude



OUR CONGREGATION

Dora Aronson Helping Hands Fund

Distributions by Rabbi David Stern to individuals in need of financial assistance, particularly in dire situations

Memory of Ted Bogart

by Lynne Bogart

Memory of Trudy Bogart

by Lynne Bogart

Memory of Alan Gold

by Irma Grossman

by Cheryl & Randy Colen

Memory of Eric Liebling

Herzog

by Irma Grossman

Memory of Marvin Labovitz

by Joan & Jerome Skibell

Memory of Edith H. Levy

by Carol Levy

Memory of Salomon Levy

by Carol Levy

Memory of Irwin Light

by Jeff Natalie & Ellie Light

Memory of Stephen G.

Sherman

by Carla Sherman

Memory of Sid Stahl

by Irma Grossman

by Julie & David Kronick

by Cheryl & Randy Colen

Birthday of Rhea Wolfram

by Rita Sue Gold

Honor of Jim Schendle

by Connie Lust & Paul Pesek

Anne and Sam Kesner Caring Congregation Fund

Assistance for Temple members through all phases of life, including hospitalization, elder care, military service, mental health challenges and grief

Memory of Ted Bogart

by Celia Rose Saunders

Memory of Philip J. Daneman

by Gay's Mussar Friends

by Sh'ma Emanu-El Food for Thought

Memory of Ida Feldman

by Paula & Norm Feldman

Memory of Marvin Gerard

by Sh'ma Emanu-El Food for Thought

by Irene & Buddy Raden

by Candy Brown, Myra

Migicovsky, Irene Raden,

Tricia Krauss-Lehrman, Gay

Daneman, Lisa Kravitz,

Kerri Lacher, Robbe

Epstein, Donna Gerber, Gail

Lawrence, & Roz Katz

by Mel & Ozzie Klein

Memory of Jerrold Goldberg

by Adrian Goldberg

Memory of Gail B. Nusinow

by Marlene Fischer

Memory of Jim Schendle

by Irene & Buddy Raden

Honor of Meaders & Robert

Ozarow

by Women of Reform Judaism

Sisterhood

As a Contribution

by Mindy & Rick Cohen

Susan Salom Clergy Good

Works Fund

Distributions to charitable organizations, individuals in need or community causes by Temple's clergy

Memory of Burton Balkin

by Esther Balkin

Memory of Bill Berry

by Ettie & Melvin Weinberg

Memory of Ted Bogart

by Rosie Stromberg

by Frank Family

by Sheri & Larry Berk

Memory of Martin P. Brown

by Marcie & Michael Brown

Memory of Ceil (Cecile) Echt

by Dorothy Weinstein

Memory of Adrienne Epstein

by Judy & Robb Steinberg,

Lindsay & Zach Steinberg

and Karly & Michael

Nieman

by Carol & Brian Bloom

Memory of Sheryl Feinberg

by Robert Feinberg

Memory of David Foland

by Beth & Jim Gold

by Kim & Avrum Schonwald

by Lotty & Peter Casillas

by Sheryl and Gordon Bogen

Memory of Sophie Gordon

by Kim & Avrum Schonwald

Memory of Carol Greenberg

by Joy Ruth Cohen

Memory of Eric Liebling

Herzog

by Drs. Evelyn & Andrew

Rosemore

by Beth & Jim Gold

by Kim & Avrum Schonwald

by Beverly & Malcolm

Bonnheim

by Marcia Grossfeld

by Jill Stone Community

Gardeners

by Sheryl & Gordon Bogen

by Catherine & Charlie Rose

by Terry & Barry Greenberg

Memory of Ruth Kalmin

by Ettie & Melvin Weinberg

Memory of Rose Kessel

by Elaine & Ken Stillman

Memory of Christian Krippner

by Rachel & Matthew Swerdlow

Memory of Reuben R.

Lebowitz

by Helen Lebowitz

Memory of Reva Lebowitz

by Helen Lebowitz

Memory of Wolf Ozarow

by The Stalarow Family

Memory of Jacob Raboff

by Esther Balkin

Memory of Sarah Reuler

by Judy Reuler Bazarzsky &

Sharon Reuler

Memory of Betty Rosenfeld

by Ilene & Steve Sanders

Memory of Joni Ross

by Becky & Richard Waldman

Memory of Sid Stahl

by Rose Stromberg

Memory of Seymour Thum

by Rose Marie Stromberg

Memory of Samuel Toub

by Brenda Toub

Memory of Stephen Louis

Bris Vogel

by Lori & Rick Golman

Honor of the Unveiling of J.

Ronald Horowitz

by Laurence Horowitz

Honor of the Unveiling of

Nancy Horowitz

by Laurence Horowitz

Honor of Rabbi David Stern

by The Family of Alan Gold

by Kerri & Rick Lacher

Conversion of Laura Pietzsch

by Caren Upshaw

Birthday of Alexandra Streng

by Sheri & Larry Berk

Birthday of Rhea Wolfram

by Sister & Joel Steinberg

Bat Mitzvah of Brinley

Silverstein

by Judy & Russell Silverstein

Naming of Brett Lacher

by Kerri & Rick Lacher

Marriage of OriAnn Phillips &

Scott McCartney

by Julie Bleicher

Appreciation of Cantor

Vicky Glikin

by Mimi & Barry Roth

by Lisa Hasday, Josh Tate,

Charlie Tate & Ellie Tate

Appreciation of Rabbi

Kimberly Herzog Cohen

by Barbara Levy

Appreciation of Rabbi

Michael Lewis

by the family of Alan Gold

by Brenda Toub

by Suzanne & Clint David

by Lisa Hasday, Josh Tate,

Charlie Tate & Ellie Tate

by Sarah & Andrew Hattersley

Appreciation of Cantor

Leslie Niren

by The Family of Alan Gold

by Betty Jo & David Bell

Appreciation of Rabbi

Debra Robbins

by Rabbi Steinman

by Bonnie Rosenberg & Joseph

Zimmerman

Appreciation of Rabbi

David Stern

by Mimi & Barry Roth

by Gail Arbetter

by Karen J Prager-Eaves

by Marcia & Bill Raffkin

by Judy & Russell Silverstein

As a Contribution

by Cantor Julia Cadrain

As a Contribution

by Rosie Stromberg



OUR TEMPLE AND CEMETERY

Rose Marion & Lee H. Berg

Building Fund

Upkeep and maintenance of our historic building

Memory of Bessie Cohen

by Helaine Trachtenberg

Memory of Sara W. Cohen

by Helaine Trachtenberg

Memory of Adrienne Epstein

by Gary Kahn

Celebration of Susan Cooper

by Vicki & Charlie Redden

Temple Emanu-El Cemetery

Endowment Fund

Distribution from the Temple's foundation supporting the maintenance and improvement of the cemetery grounds

Memory of Ted Bogart

by Louise Bell

Dorothy & Henry Jacobus

Archives Fund

Support of special exhibits from our Archives

Memory of Raymond

Edelman

by Debbie Taub

Memory of Adrienne Epstein

by Andrea Wolf & Norm

Bleicher

by Lois Wolf

Rabbi Gerald J. Klein

Memorial Cemetery Fund

Beautification and improvements of the Temple Emanu-El Cemetery

Memory of Alan Gold

by Lois Wolf

Memory of Lewis Lamark

by Arlene Lamark

Memory of Harry S.

Morchower

by Bette & Gary Morchower

Memory of Richard Strauss

by Cathey & Jim Greenfield

As a Contribution

by Lynn & Dennis Brent

Rabbi Gerald J. Klein

Garden Fund

Maintenance of the

Klein Garden

Memory of Harold Berman

by Morey & Toni Silverman

Memory of Eric Liebling

Herzog

by Joyce & Alan Goldberg

Memory of Gail B. Nusinow

by Joyce & Alan Goldberg

Memory of Adolf Pomarantz

by Dr. & Mrs. Lawrence S.

Barzune

Birthday of Cathy Gilberg

by Linda Evans



GENERAL

Temple Emanu-El General

Operating Fund

Support of Temple's general programs and events

Memory of Herman Abrams

by Judith Lifson

Memory of Joan Beck

by Polly O. Weisberg
by Stephanie & Scott Rosuck
Memory of Harry S. Goldman
by Joe Goldman
Memory of Harold A. Goodman
by Ann Kahn
Memory of Leonard Goodman Jr.
by Karla & Larry Steinberg
Memory of Helene Greenwald
by Janet & John Eickmeyer
Memory of Eric Liebling Herzog
by Rachelle & Paul Crane
Memory of Jeffrey Hurst
by Nikki Gibson
Memory of Helen Wolff Kessler
by Barbara & Richard Massman
Memory of Sam Kessler
by Barbara & Richard Massman
Memory of Peter Levy
by Marc & Tobey Passman
Memory of Jeffrey Phillips
by Judy & Mark Jaffe
Memory of Judson Phillips
by Judy & Mark Jaffe
Memory of Kace Phillips
by Judy & Mark Jaffe
Memory of Marge Phillips
by Judy & Mark Jaffe
Memory of Ladeen Pluss
by Karla & Larry Steinberg
Memory of Edgar A. Robinson
by Edgar A. Robinson Family
Memory of Ester Rouso
by Isaac Rouso
Memory of Melanie Kusin Rowe
by Becky & Ken Bruder
Memory of Erica Savadier
by Frada & Alan Sandler
Memory of Jim Schendle
by Alan & Sherri Darver
Memory of Jim Schendle
by Becky & Ken Bruder
Memory of Morris Schwartz
by Edgar A. Robinson Family
Memory of Sid Stahl
by Lois & Ross Finkelman
by Al Ellis
by Stephanie & Dan Prescott
by James, Laura, Meredith, & Sarah Alexander
by Ed & Jamie Tonkon
by Karla & Larry Steinberg
by Becky & Ken Bruder
by Lori Glazer & Lisa and Neil Goldberg
by Karen & Richard Pollock
Memory of Barbara Steinberg
by Karla & Larry Steinberg
Memory of Seymour Thum
by Karla & Larry Steinberg

by Oliver Steinberg
by Ynette & Jimmy Hogue
Memory of Rhoda Toronto
by Barbara & Richard Toronto
Memory of Stephen Louis Brits Vogel
by Kim & Jim Chapman
Memory of Arthur Weinstein
by Dorothy & Lew Weinstein
Honor of Hallie Weiner
by Kerrie & Steven Wolfson
Birthday of Buddy Gilbert
by Felise & Harold Leidner
Birthday of Adele Ryemon
by Lillian & David Shriro
Birthday of Rhea Wolfram
by Connie Rudick
by Joan Kramer
by Mary Lee & Michael Broder
As a Contribution
by Iris Podolsky

Temple Emanu-El Endowment Fund

Distribution from the foundation supporting Temple's programs
Memory of Adrienne Epstein
by Bobbi Kornblit
Memory of Alan Gold
by Gayle Johansen
by Jan & Tom Timmons
by Marcia Grossfeld
Memory of Richard Lerer
by Phyllis & Jerry Prager
Memory of Sid Stahl
by Sister & Joel Steinberg
Memory of Seymour Thum
by Lindsay & Jeffrey Steinberg
by Suzi & Jack Greenman
Memory of Ben Williams
by Stephanie & Dan Prescott
As a Contribution
by Helen Sue Lebowitz



MUSIC AND PRAYER

Music Fund
Enhancement of Temple music programs
Memory of Marvin Gerard
by Susy & Brian Strull
by June Leib
Memory of Alan Gold
by Constance Rudick
by June Leib
by Renee & Buddy Gilbert
Memory of Evelyn Goldstein
by Barbara Miller

Memory of Sarah Hurwitz
by Marlene & Richard Marks
Memory of Dell Kaplan
by Gail & Bob Weltman
Memory of Gail B. Nusinow
by June Leib
Memory of Edward Snyder
by Sylvia & Malcolm Cohen
Memory of Sid Stahl
by Constance Rudick
by June Leib
Memory of Julius Stower
by Sharon Miller
Memory of Samson Wiener
by Nancy Wiener Marcus
Honor of the Bar Mitzvah of Austin Sacks
by Kathy Friedman
Honor of Cantor Vicky Glikin
by Barbara Levy
Honor of Rabbi Debra Robbins
by Cantor Rita Glassman
Honor of Hallie Weiner
by with Gratitude, Gail Arbetter
Appreciation of Gayle Johansen
by Karen Cheniae
As a Contribution
by Andrew Zusman



ADULT PROGRAMS

Katherine F. Baum Adult Education Fund
Support for adult education programs
Memory of Katherine F. Baum
by Peggy & Dave Millheiser
by Suzi & Jack Greenman
Memory of Curry Eaves
by Karen Prager Eaves
Honor of the 70th Anniversary of Bat Mitzvah Susan Cooper
by Betty & Douglas Brenner
Birthday of Rhea Wolfram
by Betty & Jay Lorch

Priscilla R. Stern Memorial Fund
Support of literacy projects in the general and Jewish communities
Memory of Toby Engel
by Lory Engel
Memory of Alan Gold
by Dana & Howard Feldman

by Judi & Randy Ratner
Memory of Kayce Goldberg
by Judy Roffman
Memory of Joe Rosenstein
by Joanne R. & Steve Levy
Family Philanthropic Fund
Memory of Gloria Mindes Silber
by Suellen & A.J. Rosmarin
Memory of Nancy Todes
by Julie & Michael Lowenberg
Memory of Ben Weinberg
by Ettie & Melvin Weinberg



SOCIAL JUSTICE

Disaster Relief Donation
Emergency support for domestic and world crisis
As a Contribution
by Patty & Paul Walnick
Charitable Fund

Hunger Relief Fund
Collection of funds for hunger relief throughout the year, especially during High Holy Days and Passover

Memory of Adrienne Epstein
by Celia Rose Saunders & Minnette Klein
by Helen Feldman
Memory of Charles Feldman
by Helen Feldman
Memory of Marvin Gerard
by Celia Rose Saunders
by Lisa & Jim Albert
Memory of Alan Gold
by Beverly & Malcolm Bonnheim
by Ruth & Edgar Robinson Family
Memory of Mae Guckenheimer
by Miriam Vernon
Memory of Eric Liebling Herzog
by Evey & Chip Fagadau and Fl Lauren & Jason Bender
by Joyce & Joe Rosenfield
by Leslie & Bob Krakow
Memory of Saul Israel
by Nancy & Solomon Israel
Memory of Helen Kerman
by Helen Feldman
Memory of Peter Levy
by Barbara Levy
Memory of Gail B. Nusinow
by Barbara Roseman

Memory of Kace Phillips
by Terry & Barry Greenberg
Memory of Jack Rosenberg
by Celia Rose Saunders
Memory of Marshall David Rosenfeld
by Ilene & Steve Sanders
Memory of Steven G. Ross
by Stephanie Ross
Memory of Phyllis Somer
by Lynne Bogart, Marsha & Ted Bogart
Memory of Ernst Sommer
by Helen Stettler
Memory of Sid Stahl
by Helen Feldman
Memory of Armand Y. Tobias
by Carol & Larry Tobias
As a Contribution
by Vesta Snider

The Jill Stone Tikkun Olam Fund
Support of Temple's social justice programs including initiatives, advocacy, projects and lectures

Memory of Joseph Abrams
by Joan Salzberger
Memory of Adrienne Epstein
by Tricia & Matt Gold
Memory of Marvin Gerard
by Tricia & Matt Gold
Memory of Alan Gold
by Janice Sweet & Arthur Weinberg
Memory of Eric Liebling Herzog

by Bette & Gary Marchower
by Karen & Shelby Wyl
Memory of Dustin Jopling
by Tricia & Matt Gold
Memory of Dell Kaplan
by Carl Weisbrod
Memory of Gail B. Nusinow
by Bette & Gary Marchower
Memory of Steve Oppenheimer
by Melanie Morris & Harry Granoff
Memory of Paul Salzberger
by Joan Salzberger
Memory of Sid Stahl
by Janice Sweet & Arthur Weinberg
Memory of Sid Stahl
by Sheryl Fields Bogen
Memory of Stephen Louis Brits Vogel
by Carl Weisbrod
by Julie & Ken Robinowitz and Walter J. Levy

Memory of Ben Williams
by Terry & Barry Greenberg
Honor of the Bat Mitzvah of Piper Hedderich
by Piper Hedderich
Birthday of Michael Horowitz
by Dana & Howard Feldman
Birthday of Mark Masinter
by Dana & Howard Feldman

Social Justice Youth Education Fund

Support of worthwhile educational causes for youth in need

Memory of Alan Gold
by Betsy & Todd Teitell
by Lotty & Bobby Lyle
Memory of Fanny Graff
by Lotty & Bobby Lyle
Memory of Eric Liebling Herzog
by Betsy & Todd Teitell
by Lotty & Bobby Lyle
Memory of Milton P. Levy, Jr.
by Nancy & Jerry Szor
Memory of Lillian Spitzer
by Lotty & Bobby Lyle
Memory of Sid Stahl
by Lotty & Bobby Lyle
Confirmation of Peyton Olivia Johnson
by Jerry & Ellen Jones
As a Contribution
by John Robert Cohn
Philanthropic Fund of the DJCF



YOUTH AND EARLY CHILDHOOD EDUCATION

Early Childhood Education Center (ECEC) Fund

Support of ECEC programs
Memory of Alan Dreeben
by Sara & David Gail
Memory of Adrienne Epstein
by Naomi Bloom
by Bess Hoffman
by Marcy & Michael Grossman
Memory of Marvin Gerard
by Judy & Ron Foxman
Memory of Laurie Gidlow
by Linda Smithloff Stone
by Amy & Jeff Asher
by Judy Clifford
by Abby & Joel Davis
by Aimee & Jack Small

by Jennifer & Stephen Walters
by Carla Sherman
by Susan, Daryl, Scott &
Allison Beck
by Donald R. Blum
Memory of Alan Gold
by Ethel Zale

Lomdim Project

Support of an open and inclusive
community for YL+E children
with special needs

Memory of Wendy Blum
by Beverly & Mark Naboshek

Metz Youth Fund

Scholarships for Jewish activities
sponsored by Temple or other
Jewish organizations

Birthday of Karlyn Herlitz
by Laurie Sutkin

Martin & Charlotte Weiss

Religious School Fund

Scholarships for YL+E fees,
books and additional expenses

Memory of Eric Liebling
Herzog

by Carol Hirsh

Memory of Louis Polakoff

by Richard Polakoff

Memory of Eileen Sitrin

by Richard Polakoff

As a Contribution

by Dana & Gail Lawrence

Shor/Lowenstein Youth

Scholarship Fund

Financial assistance to families
for participation in youth
programs

Memory of Louis Goldberg

by Rick & Mindy Cohen

Conversion of Amir Ellis

by Robin Kosberg

Conversion of Laura Pietzsch

by Robin Kosberg

Seth Davidow Family

Youth Fund

Distributions from the
Temple Emanu-El Foundation
supporting youth program
Birthday of Rhona Streit
by Melanie Fogel



WRJ

Funds to support activities of
Women of Reform Judaism

YES Fund of Sisterhood

Support of the Youth, Education
and Service programs of Women
of Reform Judaism

Memory of Eric Liebling

Herzog

by Susan Cooper

Memory of Dr. Jack

Rosenberg

by WRJ

Memory of Marilyn Rich

by Celia Saunders & Minnette

Klein

Honor of Jacquie Schwitzer

by Celia Saunders & Minnette

Klein

Freda Gail Stern Fund

As a Contribution

by Cathy Hirsh

Women of Reform Judaism

Memory of Joie Lynn

Dominus Reavis

by Celia Saunders & Minnette

Klein

CREATING
possibilities
TOGETHER 2023-2024
ANNUAL FUND

Thank you for helping to Create Possibilities Together
with your generous gifts to the
Temple Emanu-El 2023-2024 Annual Fund.

Because of YOU, Temple enriches the lives of our members
and strengthens the bonds that unite us.

SHINE the light

**SUPPORT AND RESOURCES
FOR SPIRITUAL AND MENTAL
WELL-BEING**

Grief Support on Zoom

First Tuesday of the month, 12-1PM: July 2,
Aug. 6, Sept. 3

In-Person Grief Support

Last Tuesday of each month, 12-1PM: July 30,
Aug. 27, Sept. 24

Jewish Family Service Support Groups

Our community partner, Jewish Family Service, helps
adults, children and families navigate mental health
challenges and coping skills through a variety of
support groups. To learn more, visit jfsdallas.org.

**Substance Abuse Support for Friends
and Families**

Thursdays every week from 5:30-6:30PM in person
and on Zoom. Contact for more information and
Zoom link: Freda Heald, fredaheald@yahoo.com

Here for You

Are you or someone you know struggling with
infertility or going through IVF? We are exploring
the possibility of a support group.
If interested please reach out to Meredith Pryzant,
mpryzant@tedallas.org.

No Barriers

Finances should never be a barrier to participation
in Temple life. Confidential financial assistance is
available for most Temple events, tuition and dues.

For information or Zoom links, please contact Meredith Pryzant, Director of Member Support,
mpryzant@tedallas.org | 214.706.0000, ext. 3802



Café
Emanu-El
SOCIAL HOUR FOR SENIORS

CAFÉ EMANU-EL

July 17 | 2-3PM

Let's build on the success of our first session and
gather for socializing and refreshing sips with new
and longtime friends.

Never too Early for Tzedakah

Our Youth Learning + Engagement students are bringing their Jewish values to life every week as they bring tzedakah to class and raise money for special events. As part of their curriculum, each grade selects a Jewish charitable organization that connects to their grade’s learning theme for the year. In addition to the contributions, classes practice social justice in many ways throughout the year.

Kindergarten: Jewish Family Service of Greater Dallas

1st Grade: Vickery Meadow Food Pantry

2nd Grade: Temple Emanu-El Hunger Relief Program

3rd Grade: ADL Texoma Region

4th Grade: Temple Emanu-El Hunger Relief Program

5th Grade: Temple Emanu-El Cemetery Fund

6th Grade: Jewish War Veterans

Israel Social Justice Elective: Friends of the IDF and Magen David Adom

Bake Sale: Vickery Meadow Food Pantry and Magen David Adom

Grand Total: \$2,631.15



Fifth grade at the Temple Emanu-El Cemetery



Seventh grade at North Dallas Shared Ministries



EVERY VOICE, EVERY VOTE

In this election year, your voice matters more than ever. In partnership with the Religious Action Center of Reform Judaism, Temple is looking for individuals or families interested in writing postcards to Texas residents in communities impacted by barriers to voting. This nonpartisan effort encourages all individuals to exercise their rights as voters.

For more information and to get involved, contact Erica Matsil, Director of Social Justice and Young Adult Engagement, at ematsil@tedallas.org

Every Voice Every Vote
2024

School's Out For Summer!

By Livia Stevenson

While our students enjoy summer vacation, our school directors are busy preparing for the fall. We chatted with Andrew Paull, Director of Youth Learning and Engagement, and Meagan Friedman, Senior Director of Early Childhood Education, to reflect on a great year and look ahead to 2024-2025.

Congrats on a great year! What's a highlight or proudest moment for you?

Andrew: Youth Learning + Engagement launched many new programs to expand our work with families, teens and partnerships inside of Temple. From K-3 family programs that allow parents to learn with students and clergy on a Sunday morning to communal art projects and our elective with the Jill Stone Community Garden, it was a great year.

Meagan: Looking back on this year, my first year with the ECEC, I am honored to be part of this amazing community that came together for the good of the children in hard times and exciting times.

YL+E had its highest enrollment in seven years! Andrew, can you reflect on the program's growth?

A: Yes! This past year, we had 602 students enrolled with lots of growth in kindergarten through second grade, which is exciting as it sets up a long-term and vibrant Jewish education environment for the years ahead. Our Madrichim program also expanded to grades 7-12 and includes tracks that allow students to select their interests and work with faculty in a mentorship way.

What three words would you use to describe YL+E/ECEC?

A: Educational, Community, Creative

M: Magical, Jewish, Inspiring



Andrew Paull



Meagan Friedman



Meagan with young fans at the ECEC sports-themed day



Andrew Paull, second row, far right, pictured with the Confirmation Class of 2024

Meagan, you got the opportunity to travel to Italy with some ECEC educators. Tell us more about your trip.

M: Five educators and I went to Italy in April and visited early childhood schools to learn more about social constructivism in the classroom. Social constructivism is the view that learning occurs through social interaction and the help of others. It was a great trip, and it was so impactful to see social constructivism in action and speak with the educators in Italy.

Andrew, your turn to kvell about the faculty!

A: It takes an army of mensches to help our students engage in Jewish learning and our community here at Temple. Our faculty of more than 50 teachers ranges from college students to retirees, people who grew up at Temple and are new to Dallas and even some who have completed their conversions and want to continue their own Jewish learning alongside their students. Whether you teach weekly or are a sub, it makes a huge impact!

What are you each looking forward to for the 2024-2025 school year?

M: With my first school year with the ECEC under my belt, I'm excited to start with more institutional knowledge and a relationship with the community. I look forward to working with the educators who joined me in Italy to bring fresh ideas and new experiences to the ECEC while strengthening our curriculum across grade levels.

A: The YL+E team is excited to continue and improve on the new things implemented this year, like family programs and all-school events. I can't wait to start off the year strong and welcome our faculty back on Aug. 18 and the entire school back for Opening Day on Aug. 25!

What are the biggest takeaways from the difficult parts of this year?

M: Although it was a stressful and scary time for adults, it was beautiful to see our community come together to minimize stress for the students and continue to offer them the same great experiences they are used to.

A: It is a critical moment in our time to be engaged in a vibrant Jewish life and that's exactly what students in YL+E are doing. Although they have to be up early on a Sunday, students leave with a smile on their faces thanks to their connection to the Jewish community and a heightened sense of Jewish identity.



Meagan and team on their trip to Italy

Fun in the Sun

Compiled by Livia Stevenson

Summer is officially here and our Temple campers at Camp Emanu-El and our partner URJ Greene Family Camp are having a blast soaking up the sun, splashing in the water and making lifelong memories with friends.



URJ Greene Family Camp



Celebrating Shavuot at Greene Family Camp

Camp Emanu-El



Exploring and learning with light and shadow



Welcome to camp! Jude Manaster snaps a photo with his family before saying good-bye.



Nola Oshman: Paint, sunshine and waterslides oh my!



Penny Bernstein shows compassion for even the smallest of God's creatures



Kibbutznik (oldest campers at GFC) Ori Birk works with his Bonim (youngest campers) Buddy during Kibbutz-Bonim Day.



Brody Krause learns through splashing at Camp Emanu-El.



The Shabbat dinosaur makes its first visit to camp.



Noa with Gil Dor and Ruslan Sirota

Waving the Blue & White

Temple turned out in full for a joyous Yom HaAtzmaut week of celebrating Israel and showing our support. The fun started with a school-wide celebration on May 14 at the Early Childhood Education Center. We shared Shabbat under the stars at the All-In Shabbat and congregational dinner on May 17. Members enjoyed two exhibits showing a range of Israeli art from photographer Lavi Lipshitz, z”l, and highlights of Temple’s collection in “Israel Illuminated.” And on May 19, we welcomed Israel superstar Achinoam Nini, or Noa, to Stern Chapel for an amazing benefit concert that raised more than \$18,000 for three communities in Israel.



Kol Shir singers make their voices heard at All-In Shabbat.



ECEC celebrates Yom HaAtzmaut.



Opening of the Israel Illuminated exhibit in the Pamela & Steven Pluss Gallery

The Window (USPS #017-824) is published six times per year by Temple Emanu-El Congregation, 8500 Hillcrest Road, Dallas, TX 75225-4204. Periodicals Postage Paid at Dallas, Texas.

POSTMASTER, send address changes to:

Temple Emanu-El Window
8500 Hillcrest Road
Dallas, Texas 75225-4204.

PERIODICALS
Time Sensitive Material

