

# The Window

וְעָשׂוּ לִי מִקְדָּשׁ וְשָׁכַנְתִּי בְּתוֹכָם

Let them make Me a holy  
place that I may dwell among them.  
Exodus 25:8

High Holy Days 5785

---

Sukkot with Spike

---

Temple Forward:  
Bylaws Task Force

# CONTENTS

## PRAYER AND SPIRITUALITY

- A Message from Rabbi David Stern 3
- High Holy Days 5785 5



## LEARNING

- Schlinger Ethics Scholar-in-Residence with Daniel Cohan, Ph.D. 26



## SOCIAL JUSTICE

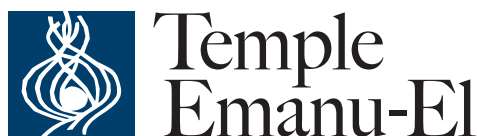
- Vote! 24
- Showing Up for Our Neighbors 25

## ISRAEL

- One Year After October 7 27

## COMMUNITY

- A Review of Temple Bylaws 8
- MAC 2024-2025 Season 10
- Take A Spin with Spike Kraus 12
- Passport to Hanukkah with WRJ 13
- Tailgate & Treats with Brotherhood 13
- Celebration and Remembrance 14
- How to Navigate the Pollock Family Media Wall 18
- Telling your Temple Story 19
- Tributes 20
- Bar Mitzvah: Samuel Leybovich-Glikin 22
- Annual Fund Spotlight: Lindsay Shipp 23



Founded in 1872  
8500 Hillcrest Road | Dallas, Texas 75225  
214.706.0000 | tedallas.org

Temple President  
Bob Krakow

Executive Director  
Meredith J. Fried

Clergy  
Rabbi David E. Stern  
Rabbi Debra J. Robbins  
Cantor Vicky Glikin  
Rabbi Amy Rossel  
Rabbi Kimberly Herzog Cohen  
Cantor Leslie Niren  
Rabbi Michael Lewis

Department of  
Congregational Advancement  
Sandy Diamond, Senior Director

The Window  
Connie Dufner, Senior Director of Communications  
Ann Wilson, graphic designer  
Thomas Booe, writer  
Livia Stevenson, writer

# The Joyful Noise of Second Chances



Rabbi David Stern

The sounds emanating from the room on the third floor of Building 6 at MASS MoCA, the Massachusetts Museum of Contemporary Art, land somewhere between joy and cacophony. It's my favorite room in this sprawling complex of 19th century buildings by the Hoosic River in North Adams that once housed

textile mills and an electronics plant. In it, you will find the instruments created by Gunnar Schonbeck (1917-2005), accomplished classical musician and longtime professor of music at Bennington College.

But don't expect anything resembling a slender Stradivarius or a fine horsehair bow. Schonbeck created his instruments from found materials: rebar, car parts, plumbing, aircraft fuselages, bellows — all of which have their own interesting sonic properties. And best of all, you get to play everything that's there: 10-foot-tall congas made of airplane parts (with steps and a platform to reach the top), a rack of chimes that looks like a deconstructed Calder mobile, irregular steel drums, an outsize lyre, or pretty much anything you can hit with a mallet. Originally used in community concerts on campus and in the town of Bennington, these brightly colored instruments invite play in every sense of the word.

Like the strips of discarded Mylar balloons that Suzanne Tick wove to create the magnificent ark doors in the Stern Chapel, the scraps of metal and wire that make up Schonbeck's creations gain a second life, and their story a second telling. Scrap metal from a junkyard now makes music and joy. If that rebar could talk, I bet it would sing.

Schonbeck's instruments make the messy sound of second chances — just like the shofar that we will begin to sound each day in the month of Elul, multiple times on Rosh Hashanah, and again to conclude Yom Kippur. *T'kiah/Shevarim/T'ruah/T'kiah Gedola* — in ragged majesty, the shofar offers the Jewish sound of second chances. We come to services at the High Holy Days to examine our souls and deeds, and with the fundamental faith that *t'shuvah* — repentance and return — are possible. We have all erred in the past year — we have hurt people we love, we have let selfishness trump compassion and impatience outstrip awareness. We struggle for compass in a world that can frighten and overwhelm us. We have judged others too harshly, and ourselves.

We have all wandered, but now the shofar comes to call us home — to relationship, to community, to love, to the essence of goodness that God has implanted in every one of us. In the words of author Bryan Stevenson, "Each of us is more than the worst thing we've ever done." Our faults and flaws are real, but now we have another story to tell: from recognition to repair, from condemnation to forgiveness, from apathy to engagement. Another story: from spirits cramped with pettiness and fear to a sense of commonality and communion with all that is, and hope for what can be.

It's hard work — the music of second chances does not make for a pretty ditty. It requires dissonance, changing rhythms and unfamiliar registers. But like the sounds emanating from that third-floor studio in North Adams, Massachusetts, it makes a joyful noise.

The shofar sounds. Our second telling awaits. *Shanah Tovah!*



# HIGH HOLY DAYS

2024/5785

## ELUL

Elul is the month we prepare to repair our world as we prepare ourselves to enter the New Year.

**Daniel Cohan, Ph.D.** (see page 26 for details)

**Sept. 13 | 6:15PM**

Out of Our Comfort Zone: Climate Change and Judaism

**Sept. 14 | 12PM**

Lunch-and-learn with Daniel Cohan

## Selichot

**Sept. 28 | 7:30PM**

Join us for text study, music and reflection led by Rabbi Kimberly Herzog Cohen and Cantor Leslie Niren.

## Psalm 27 Online Class with Rabbi Debra Robbins

Wednesdays at 9AM, Sept. 4-Oct. 13

This Elul marks the sixth season of "Opening Your Heart with Psalm 27" and we return to these words for courage and hope.

## ROSH HASHANAH | OCTOBER 2-3

All Rosh Hashanah and Yom Kippur services will be livestreamed unless marked as "in person only."

### Erev Rosh Hashanah

**6PM:** Olan Sanctuary

**8PM:** ATiD service, Stern Chapel

For 20s and 30s, oneg reception following

### Rosh Hashanah Day

**9AM:** Tots and Their Families Service, Stern Chapel

Ages birth through kindergarten, including a blessing for all children born since last Rosh Hashanah

**9:30AM:** Olan Sanctuary

**10:30AM:** Family Service, Stern Chapel

Especially for families with children in grades K-5; siblings of any age are welcome

**1PM:** Stern Chapel

Experiential service, introduced in 2023, that combines traditional Rosh Hashanah prayer with poetry, reflection and contemporary music. (A pre-service oneg will be held at noon for ATiD 20s and 30s.)

## Tashlich

Tashlich is the ritual tossing of sins and regrets into flowing water. We will host multiple observances throughout Dallas. While some are designed for certain groups, all are open to everyone.

We request reservations so that our lay facilitators will have enough materials for everyone.

**10AM:** Caruth Park, 7801 Hillcrest Ave., especially for tots

**12:30PM:** Caruth Park, especially for families

**3:30PM:** Caruth Park

**4PM:** Twin Lakes Park, 7400 Campbell Road

**4PM:** White Rock Lake, 4600 W. Lawther Drive, especially for ATiD, 20s and 30s

## KEVER AVOT | OCTOBER 6

**10:30AM:** Temple Emanu-El Cemetery and Mausoleum, in person only

Join the clergy and other members in this service of reflection and memory.

## YOM KIPPUR | OCTOBER 11-12

### Kol Nidre

**7:30PM:** Olan Sanctuary

### Yom Kippur Day

**9AM:** Tots and Their Families Service, Stern Chapel

**10AM:** Olan Sanctuary

**10:30AM:** Family Service, Stern Chapel

**12:30-2:15PM:** Expanding the Tent: Study, Reflection, Rest and Spirit (see next page for details)

**3PM:** Prayer and Music of the Heart, Olan Sanctuary

**4:30PM:** Yizkor, Olan Sanctuary

**5:30PM:** N'ilah and Havdalah, Olan Sanctuary, followed by a congregational break-the-fast

# YOM KIPPUR AFTERNOON

## *Expanding the Tent*

This year, with our new schedule, we hope you will spend the day at Temple, moving from place to place along the journey toward wholeness in our lives and healing in our souls. This year we are Expanding the Tent on Yom Kippur afternoon, and there are times and places to learn and to listen, to express your creativity and open your heart. Take a guided tour of the Barbara Zale Center for Living History and visit with friends in Tycher Gathering Space. Seek a quiet place for reflection in the Celebration Garden and other spaces around Temple. We invite you to relax and recharge in our *mishkan* on this Sabbath of Sabbaths.

Please join us as we deepen our connections and embrace this sacred time together as a *kehillah kedoshah*, a holy community.

### A PEACEFUL PLACE

A quiet zone to put down your phone and put up your feet will be available from 12-3PM. Watch Temple communications for locations of all Yom Kippur afternoon experiences.



### EXPANDING THE TENT

**12:30-1:15PM**

#### Notes of Resilience and Forgiveness

Cantor Leslie Niren and Ben Loeb

Let the music performed and created in Czechoslovakia's Theresienstadt Camp inspire and guide you at Yom Kippur.

#### Nafshi Y'shoveiv, My Restored Soul

Rabbi Debra Robbins

The enduring words of Psalm 23 (in various translations) guide us from the valleys of shadow into the light of a new year.

#### The Soul's Sanctuary

Cantor Vicky Glikin and Rabbi Kimberly Herzog Cohen

Through meditation, song, silence, poetry and gentle movement, we will seek greater attunement of mind, body and spirit.

#### Yom Kippur for Teens: Forgive or Forget?

Rabbi Michael Lewis and Megan Sims

Temple teens are invited to a conversation to explore how we can forgive our friends, our family and ourselves.

**1:30-2:15PM**

#### Notes of Resilience and Forgiveness

Cantor Vicky Glikin and Ben Loeb

Let the music performed and created in Czechoslovakia's Theresienstadt Camp inspire and guide you at Yom Kippur.

#### The Soul Returns: A T'shuvah Workshop

Rabbi Amy Rossel and Rabbi Michael Lewis

Jewish sources will guide us to greater awareness of who we are and who we want to be.

#### Mapping Our Journey

Cantor Leslie Niren and Aya Margalit, Jewish Agency  
Community Sh'lichah

With visual arts to center us, we will use the themes of Yom Kippur to help process our emotional journey since October 7.

**12-3PM**

#### Barbara Zale Center for Living History

Docents will be available to help you learn about this exciting new space at Temple.

## SUKKOT | OCTOBER 17-23

### *Sukkot Festival Service*

Thursday, Oct. 17 | 10:30AM | Temple sukkah, in person only

### *Sukkot Weekend with MAC Artist Jacob Spike Kraus*

Oct. 18-20 | Register to attend at [tedallas.org/events](https://tedallas.org/events)

Bring on the joy of Sukkot with Jacob Spike Kraus' spirited blend of folk, pop and rock. Learn more about Spike and his music on page 12.

### *All-In Shabbat, Congregational Dinner and Concert*

Friday, Oct. 18 | 6PM | Nasher-Haemisegger Family Atrium and online

Celebrate Sukkot together as a community in a Shabbat service, followed by a congregational dinner and art activities for all ages. After dinner, keep the festive spirit flowing at an exciting concert with Spike!

### *Shabbat Morning Concert with Spike*

Saturday, Oct. 19 | 9AM | Nasher-Haemisegger Family Atrium, in person only

Calling our Tot Shabbat community and all families with young children! Enjoy a lively Shabbat of music and prayer with Spike for the whole family, complete with a bagel breakfast.

### *Shabbat Nosh*

Saturday, Oct. 19 | 12PM | Temple sukkah, Nasher-Haemisegger Family Atrium

Following the Shabbat morning service, welcome new members to Temple with a special Shabbat Nosh in the sukkah. Thank you WRJ for supporting our Shabbat Nosh lunches this year.



### *Order Your Lulav and Etrog by September 25*

Enjoy the beautiful symbols of Sukkot in your own sukkah or here at Temple. Order your set for \$54 by Sept. 25. Orders will be available for pick-up at Temple Emanu-El.

To order: [bit.ly/lulav2024](https://bit.ly/lulav2024)

Contact: Tal Drori, Education and Engagement Event Manager, [tdrori@tedallas.org](mailto:tdrori@tedallas.org)

### *Reserve Time in the Temple Sukkah*

Fulfill the mitzvah of dwelling in the sukkah by organizing a meal or gathering to take place in the Temple sukkah.

Reserve your timeslot today at [bit.ly/sukkah24](https://bit.ly/sukkah24)



## SIMCHAT TORAH | OCTOBER 23-24

### *Simchat Torah Evening Service*

Wednesday, Oct. 23 | 6PM | Stern Chapel and online

Join us for a joyful and energetic evening that will include consecration of our youngest learners, unrolling the Torah from beginning to end, singing and dancing with the Torah and our sixth grade siddur ceremony.

### *Simchat Torah Morning and Festival Service with Yizkor*

Thursday, Oct. 24 | 10:30AM | Stern Chapel and online

This service includes the opportunity to remember your loved ones.



## HUNGER RELIEF

The High Holy Days Hunger Relief Drive will resume in our annual effort to help those in need at this sacred time of year. We welcome donations of nonperishable items to our collection truck from Oct. 1-19. The food will then be distributed to North Dallas Shared Ministries. Cash donations are also accepted at [tedallas.org/hungerrelief](https://tedallas.org/hungerrelief) or by mailing a check to Temple indicating the Hunger Relief Fund as the recipient.



# Helpful Details

## HIGH HOLY DAYS REGISTRATION

All registration for High Holy Days services is being conducted online only. Temple staff will be available to help anyone who needs technical assistance. For information, call Temple's main line at 214.706.0000 or email [hhd@tedallas.org](mailto:hhd@tedallas.org).

## LIVESTREAMING

It's easy to participate in Temple's beautiful online services. Please visit the homepage of [tedallas.org](http://tedallas.org), and you'll find prominent links to the High Holy Days services. If you want to watch them on your own time, recordings will be available shortly after the conclusion of the service.

## DAY-OF ADMISSION AND SECURITY

- Admission to High Holy Days services is tied to the QR code that you received when you completed your online registration, it will give you access to all services you registered for this year. **Everyone has an individual QR code, which will be resent to the email provided at registration prior to the day of the service.** If you need assistance locating each QR code for those you registered for, please contact us at [hhd@tedallas.org](mailto:hhd@tedallas.org).
- There will be three entrances to the building during the High Holy Days. The main entrance ramp facing Hillcrest, the doors into Tycher Gathering Space through Nasher-Haemisegger Family Atrium and the access entrance for drop-offs at the back of Olan Sanctuary.
- Security is a priority at Temple. To keep everyone safe and keep the entry process as quick as possible, please refrain from bringing large handbags, backpacks or duffel bags to Temple. Occasional searches may be necessary at the discretion of security personnel.

## ACCESSIBLE TO ALL

- Our access entrance in the back of Olan Sanctuary will be open for drop-offs for those who need mobility assistance or a shorter walk. When you arrive, let our security team know that you are looking for the access entrance and they will guide you.
- Also at the back of Olan Sanctuary, Temple staff and lay leaders will help our guests with wheelchair entry, hearing-assisted devices and large-print prayer books.
- For those who would like, an elevator is available to the left of the Lefkowitz Chapel doors outside of the Tycher Gathering Space Hillcrest entrance. An elevator is also available in the rear foyer of Stern Chapel to access the balcony.

## HIGH HOLY DAY RECIPROCITY

If you or your family will be attending High Holy Days services at another congregation, please contact High Holy Days Team at [hhd@tedallas.org](mailto:hhd@tedallas.org) and we will help get the information you need.

## PARKING AND TRANSPORTATION

- There is plenty of parking available at Temple and the satellite location at NorthPark Center. Please leave yourself time for transit and plan your choice of parking according to the service schedule. Also be aware that Temple has increased security measures and only one entrance will be used; the entrance will be monitored by Dallas police and Temple's own security staff.
- **Temple parking lot:** Be prepared to show your QR code for entry at checkpoints before entering the lot. Parking access will be available at the middle entrance on Hillcrest Road. We will do our best to accommodate those with handicapped parking tags, either from Temple or state-issued, with closer parking spaces. There will be multiple golf carts in the parking lot to offer rides to people from their cars to the doors.
- **NorthPark Center:** Parking is also available at NorthPark Center, just north of Macy's, facing Park Lane. Be prepared to show your QR code before boarding the bus which will drop you off at the main entrance ramp facing Hillcrest.

# TEMPLE FORWARD

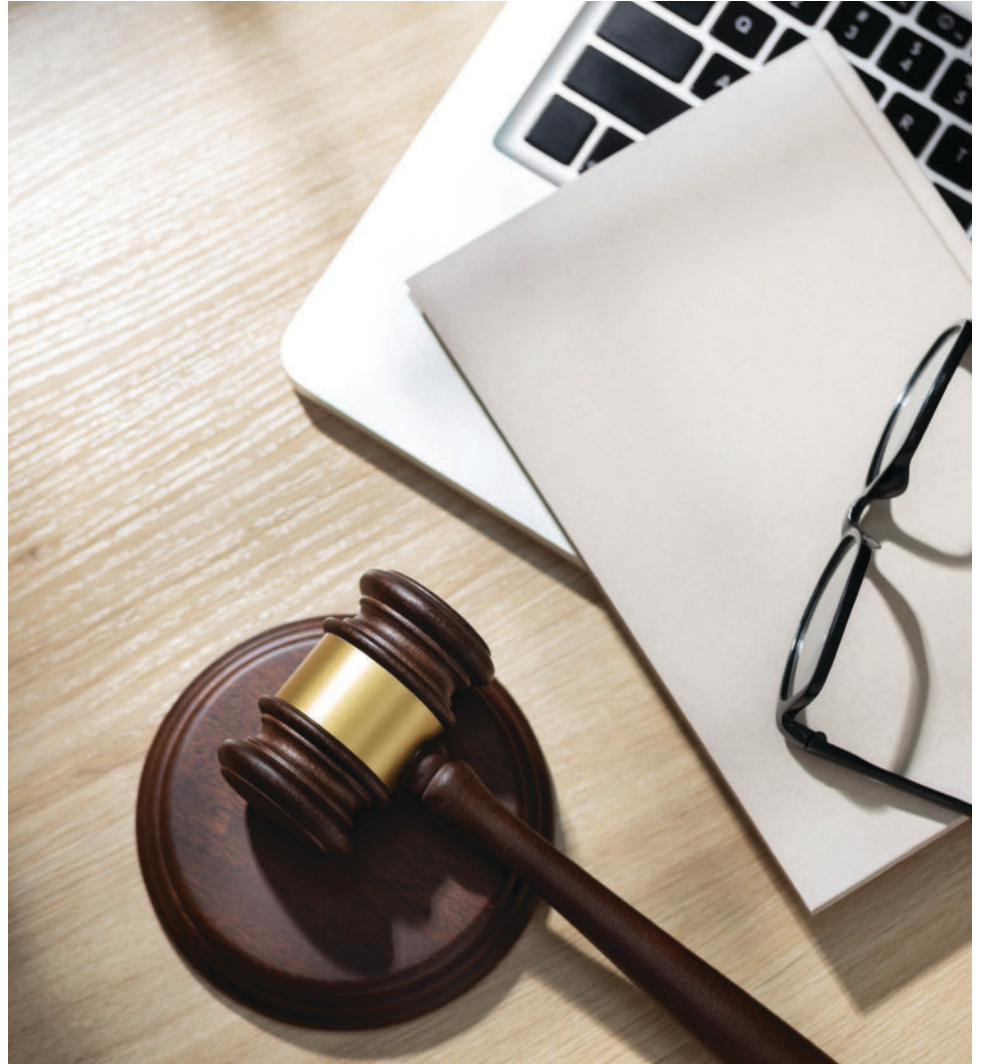
## A New Look at Governance

Temple has been fortunate to benefit from 150-plus years of committed lay leadership. In a congregation of more than 2,500 households, our best moments come when we work together to make the best decisions for Temple. Being a Temple leader means countless hours in committee meetings, coffee dates, parking lot huddles, phone calls, Zoom screens and more, collaborating on the best ways to chart a course for Temple's future.

As we look toward the future in the aftermath of TE150, the bylaws, or policies determining how we govern, are 50 years old. While they have served us well over the years, they are outdated concerning Texas nonprofit law, Reform movement practices, and our own growth as a congregation. (In 1974, for example, Temple did not have a preschool!)

"Although there have been some revisions along the way, this is the first opportunity to take a comprehensive look and see where there are opportunities to make some enhancements that will serve our temple well for the future," says Greg Gerstenhaber, co-chair of the Bylaws Task Force convened by President Bob Krakow.

"Through the bylaws, the congregation delegates to the Board of Trustees the responsibility for managing the affairs of Temple," says Bob. "This includes critical items such as the hiring of clergy and the Executive Director, as well as the management of Temple's finances. I formed the bylaws task force to address the longstanding need to review our current bylaws and, in the process, our entire governance structure."



The task force has been working for 14 months on a thorough audit of Temple's bylaws, a review of the current governance model and a proposal for new bylaws. In the coming months, the congregation will have many opportunities to learn about the task force's work and give input before voting next January on bylaws revisions and proposed changes to our governance model.

Greg Gerstenhaber and Sara Albert are the Temple officers who lead the task force, which includes Flauren Bender, Harlan P. Cohen, Larry Ginsburg, Mark Kleinman, Katherine Krause, Nancy Rivin, Scott Rosuck, Jeff Zlotky, Bob Krakow ex officio, and Julie Meyer as staff liaison.

"We have a phenomenal task force comprised of thoughtful leaders with substantial Temple experience, leadership roles at other prominent Dallas nonprofits,



and expertise in nonprofit governance. They are hard at work to present for approval first to the Board and then the congregation the bylaws we need for 2024 and beyond,” says Bob.

The task force researched the governance structure of 13 congregations of 1,500 or more members, conducted interviews with current and former Temple lay leaders, identified areas of improvement and presented different concepts for the governance structure.

“The task force has been exhaustive in its approach to this work, including interviews with many from within our Temple community, as well as benchmarking of trends and best practices from other congregations in our size range across the country,” says Greg.

Stakeholder interviews identified many positive aspects of Temple’s leadership practices, including collaboration among lay leaders, clergy, and staff; participatory decision-making, the importance of committees and task forces; and flexibility to adjust to changing conditions.

“We have taken a fresh look at such things as the size of our Board, the role of our Executive Committee, the engagement of Board members, the critical role of our vast committee structure, and how we develop our next generation of leaders,” says Sara, co-chair of the task force and Temple’s first vice president.

“We are imagining whether there is an alternative model that might enhance governance at Temple, strengthen

decision-making, increase satisfaction with engagement in leadership, and bring more congregants into the leadership tent. Raising these questions has taken us on an exciting journey of learning from our current and past lay leaders, Temple staff and clergy, and from peer congregations across the country,” she says.

The Task Force will be presenting a draft of new bylaws to the Executive Committee and Board of Trustees later this fall. The Board will then vote on a recommendation to present to the congregation in a special meeting to approve the bylaws. Any changes would then be implemented with the new Board term in 2025.

“The entire process has been incredibly thoughtful, thorough and collaborative,” says task force member Lauren Bender. “The group deliberated the various options for change with the goal of building on what has made our governance so effective to date. Everyone was heard and there was a lot of give and take. The proposed updated bylaws reflect best practices, the diligence and care of this dedicated group, and the pulse of a broad representation of past and current Temple leadership.”



Greg Gerstenhaber



Bob Krakow



Lauren Bender



Sara Albert

---

## SH’MA EMANU-EL

### Join a Group Today!

It’s time to sign up to be a part of a 2024-2025 Sh’ma group! From groups that explore cultural events to hiking to book clubs and mah jong you are sure to find the group that is right where you belong. Visit [tedallas.org/shmagroups](https://tedallas.org/shmagroups) to use the online group finding system to express your interest in joining a group.

Questions? Contact Shira Stevenson at [sstevenson@tedallas.org](mailto:sstevenson@tedallas.org)





# 2024-2025 SEASON

OCTOBER 18-20, 2024

## SUKKOT WITH SPIKE

Bring on the joy of Sukkot with Jacob Spike Kraus' spirited blend of folk, pop and rock. An electrifying performer, passionate educator and innovative composer, Spike mesmerizes audiences with his singable, modern melodies grounded in Jewish tradition.



DECEMBER 17, 2024 | 6PM

## HANUKKAH AT NORTHPARK

Celebrate Hanukkah and show your pride in this beloved annual concert, featuring the Temple Emanu-El Adult Choir, Kol Shir Youth Choir and special guests. Join Temple and the greater Dallas community for a fun-filled celebration for all ages!



NOVEMBER 17, 2024 | 4PM

## THE MARCY & ZINA SHOW

Broadway comes to Stern Chapel as award-winning duo lyricist Marcy Heisler and composer Zina Goldrich take center stage in The Marcy & Zina Show, a musical theater cabaret. Marcy and Zina's romantic comedy songs have been featured in venues across the world and recorded by top artists across many genres, but no one does them better than Marcy and Zina themselves!

*Sponsored in part by Beverly Goldman Charitable Fund*



FEBRUARY 7-8, 2025 SHABBAT SHIRAH

## NIGUNIM ENSEMBLE

We welcome Rabbi Cantor Shani Ben-Or and Boaz Dorot straight from Israel and the Israel Movement for Reform and Progressive Judaism. This pioneering ensemble creates, arranges, and performs sacred music to accompany prayer throughout Israel. Experience their uniquely Israeli sound for the first time in Dallas!

APRIL 23, 2025 | 7:30PM  
 YOM HASHOAH  
 MORTON H. MEYERSON SYMPHONY CENTER



## DEFIANT REQUIEM: VERDI AT TEREZÍN

Experience the power of music as spiritual resistance in this multimedia concert-drama about courageous Jewish prisoners in the Theresienstadt Concentration

Camp (Terezín) during World War II, who performed the Verdi Requiem 16 times, including one performance before SS officials from Berlin and the Red Cross. Presented on Yom HaShoah and the 80th anniversary of the liberation of Terezín, this Dallas premiere features video and narrated testimony by Terezín choir members and their extraordinary conductor Raphael Schächter.

The production is conducted by Temple member Benjamin Loeb, narrated by Defiant Requiem Foundation founder Murry Sidlin and Cantor Vicky Glikin, and features the Temple Emanu-El Choir, the Dallas Symphony Orchestra and Chorus, and guest soloists Allison Charney, Scott Conner, Eleni Matos and Bruce Sledge, with participation by Cantors Leslie Niren and Hallie Weiner.



*"We will sing to the Nazis what we cannot say to them."*

Conductor Rafael Schächter (1905-1945)



# Take a Spin with Spike

By Livia Stevenson



We can't wait to celebrate Sukkot on Oct. 18-20 with Jacob Spike Kraus, one of Reform Judaism's leading young musicians. Spike spent some time with the Window to share his creative journey, inspirations and what drives his passion for Jewish music.

As the son of a Reform rabbi, Judaism has always been prominent in your life. How has your upbringing played a part in your musical path?

Growing up, I was immersed in Judaism through Jewish day school, religious school, URJ Eisner Camp and NFTY. This constant exposure made Judaism feel like a given, and I took it for granted. By high school, I started song leading, which transformed my relationship with my Jewish knowledge and allowed me to engage with it and with others. Music made Judaism exciting for me, and now I write Jewish music hoping to inspire and open doors for others.

Where does the inspiration for your music come from?

I first attended Havah Nashira in 2010, a gathering that celebrates Jewish community through song. Meeting incredible Jewish musicians there made me realize that Jewish music was a path I could pursue. I'm inspired by the rich legacy of Jewish music and how artists build on the work of those who came before them. My goal is not to replace their contributions but to continue the tradition and open doors to Judaism, just as music has done for me.

What can we expect from our upcoming weekend with you?

You can look forward to an engaging experience built on three core elements: energy, musicianship, and education. I bring a high energy leadership that encourages participation and makes you want to lean into the experience. With a background in music, I offer a diverse sound and top-notch production while also being creative and having something for everyone. And finally, I aim to do more than song lead. I'm excited to share the knowledge I have about not only what we are saying but also why we are saying it.

One more thing: the nickname Spike?

One summer at Camp Eisner I was in a cabin with four or five Jacobs in it and the counselors needed a way to tell us all apart. I used to spike my hair, so that summer I became Spike. It stuck!

Register for Sukkot with Spike at [tedallas.org/events](https://tedallas.org/events)

  
JACOB SPIKE KRAUS





# Passport to Hanukkah

Celebrate and Shop  
Presented by Women of Reform Judaism

SUNDAY, NOVEMBER 10  
— 9AM-3PM —

You're invited to a feast for the senses and a spectacular gathering for the community. Choose from an exceptional gallery of gift merchandise – many from local Jewish artisans – that will offer hours of browsing and schmoozing fun. Mark your calendars now!

## COWBOYS GAME DAY TAILGATE & TREATS AT TEMPLE

Presented by Temple Emanu-El Brotherhood  
November 10 | 9AM-3PM  
Nasher-Haemisegger Family Atrium

Fuel up for the Cowboys/Eagles match at Brotherhood's pregame experience with a daylong menu of delicious foods including breakfast, burgers, hot dogs and all the classic fixings. It's a touchdown for everyone and a game day to remember!



# Celebration and Remembrance

Compiled by Thomas Booe

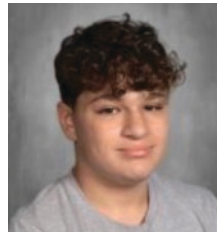
## BECOMING B'NAI MITZVAH



**Liam Calder**  
September 7  
Son of Stacy and Eric Calder  
St. Mark's School of Texas  
Tikkun Olam: Austin Street  
Center



**Sarah Federick**  
September 7  
Daughter of Deborah and  
Travis Federick  
Fowler Middle School  
Tikkun Olam: Lemon  
Aide Society



**Ethan Shrayber**  
September 7  
Son of Tatyana Kravets and  
Felix Shrayber  
Frankfurt Middle School  
Tikkun Olam: Shepton  
High School



**Hannah Beckman**  
September 14  
Daughter of Lauren and  
Joshua Beckman  
Greenhill School  
Tikkun Olam: VNA Meals  
on Wheels



**Chloe Netanya Hoffer**  
September 14  
Daughter of Caron Hoffer  
and Matthew Hoffer  
Shelton School  
Tikkun Olam: Feed My  
Starving Children, Operation  
Kindness, Temple Emanu-El  
ECEC camp



**Avia Winski**  
September 14  
Daughter of Ronnie Shalev  
and Ben Winski  
McCulloch Intermediate  
School/Highland Park  
Middle School  
Tikkun Olam: East Lake  
Pet Orphanage, Vickery  
Meadow Food Pantry



**Libby Opal Beck and Judah  
Morison Beck**  
September 21  
Children of Amanda and  
Scott Beck  
Libby: Parish Episcopal  
Judah: Greenhill  
Tikkun Olam:  
Libby: Friendship Circle  
Judah: Feed My  
Starving Children



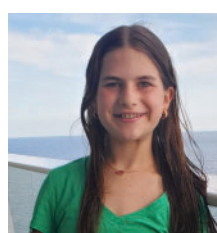
**Harper Segal**  
October 19  
Daughter of Wendy and  
David Segal  
Parkhill Junior High School



**Ava Greer Whitman**  
October 19  
Daughter of Michelle and  
Craig Whitman  
Parish Episcopal School  
Tikkun Olam: Lemon Aide  
Society and Operation  
Kindness



**Abigail Goldman**  
October 26  
Daughter of Caroline and  
Mark Goldman  
Highland Park Middle  
School



**Alexandra Claire Leib**  
October 26  
Daughter of Michelle and  
Eric Leib  
Renner Middle School  
Tikkun Olam: North Texas  
Food Bank

## NEW AND RETURNING MEMBERS

Allison, Scott, Kaley and Danielle Anderson  
Dan Berlin  
Mark Brown, Audrey and Scarlett Westlauer  
Yolanda Brunson  
Peter, Arielle, Noah and Eli Derman  
Adam Falkauff and Alexis Caldwell  
Kari, Gregory and Paloma Forero  
Blair, Eric and Henry Freedman  
Holly, Elliott and Isabel Friedman  
Mickey and Lori Goldberg  
Leah Goldsmith  
Samantha, Scott, Sadie and Sawyer Goldstein  
Bud Krause  
Andrew, Kimberly, Anna and Alexandra Mabel  
Ryan, Shauna, Brayden and Ellie Milstein  
Alex, Kelsey, Nelson and Florence Radunsky  
Arlene Stein  
Alyson and Joshua Treistman

## WEDDINGS



Rachel Wilk and Sam Ross

## BABY NAMINGS



**Jules Maximus Bettes**  
 Son of Erin Tonkon and Brent Bettes  
 Grandson of Jamie and I. Edward "Ed" Tonkon



**Bronwyn "Winnie" Cohen**  
 Daughter of Vanessa and Lee Cohen



**Julianna Blake Dandes**  
 Daughter of Ali and Ryan Dandes



**Jacob "Jake" O'Boyle English**  
 Son of Jaime Crowley and Nicholas English  
 Brother of Bennett, Violet and Ives English  
 Grandson of Bobbie and Geoff Crowley



**Miles Knox Freedman**  
 Son of Blair and Eric Freedman  
 Grandson of Lori and Richard Golman



**Amelia Eliora Geld**  
 Daughter of Kiandra and Zach Geld



**Jordy Dude Goldberg**  
 Son of Lexi and Brandon Goldberg  
 Grandson of Lori and Miles Goldberg



**Samuel Abram Jakubowich**  
**Elly Selah Jakubowich**  
**Leah Marian Jakubowich**  
 Children of Sophie and Alex Jakubowich



**Connor Lewis Kline**  
 Son of Madeleine and Ryan Kline  
 Grandson of Stephanie and Scott Rosuck, Samara Kline and  
 Andy McCarthy and Scott and Michele Kline



**Charlotte Brooke "Lottie" Morchower**  
 Daughter of Megan and Andrew Morchower  
 Granddaughter of Bette and Dr. Gary Morchower



**Annie Leona Williams**  
 Daughter of Peyton and Aaron Williams  
 Granddaughter of Marla and George Williams



**Vienna Pauska**  
 Daughter of Czarina and Adam Pauska



**Lior Kolni-Reed**  
 Son of Miriam Kolni and Lindsey Reed  
 Brother of Jude Kolni-Reed and Ayla Kolni-Reed  
 Grandson of Leah Beth and Harold Kolni

## IN MEMORIAM

**Jim Baron**  
 Husband of Liz Baron  
 Father of Zak Baron and Kate Stewart  
 Brother of Daniel Baron

**Jerry Barshop**  
 Father of Bruce Barshop and Celia Barshop

**Paul Bierbrier**  
 Father of Eric Bierbrier, Stewart Cohen, Nancy Israel, Lisa Rezensoff and Shari Tobin

**Norman Bleicher**  
 Husband of Andrea Wolf  
 Brother of Bob Bleicher, Dan Bleicher, Joel Bleicher, Jon Bleicher, Paul Bleicher and Rebecca Bleicher  
 Former spouse of Julie Bleicher  
 Father of Noah Bleicher and Zachary Bleicher  
 Stepfather of Gabriela Jones

**Becca Bowen**  
 Sister of Deborah Jones-Hurd

**Peter Casillas**  
 Husband of Lotty Casillas

**Ruth Chafetz**  
 Mother of Michael Chafetz, Nelson Chafetz and Ronald Chafetz  
 Sister of Sarah Yarrin

**Lois Miller Daneman**  
 Mother of Michael Daneman, Neal Daneman, Phillip Daneman and Scott Daneman

**Harriet Ann McCartney Duke**  
 Mother of Scott McCartney

**June Biber Freeman**  
 Mother of Andrew Freeman, David Freeman, Eric Freeman and Gretchen Freeman  
 Sister of Barbara Brous

**Jeff Friedensohn**  
 Father of Chad Friedensohn, Jesse Friedensohn, Joshua Friedensohn, Lance Friedensohn and Zachary Friedensohn  
 Sister of Stephanie Adams

**Wolf Gloger**  
 Husband of Quinnie Gloger  
 Father of Ethan Gloger, Hannah Gloger and Isaac Gloger

**Harvey Goldsmith**  
 Brother of Ann Wolovits

**Martin "Marty" Golman**  
 Husband of Susan Szafir Golman  
 Father of Stacey Baer, Max Golman and Robin Unterberg  
 Brother of Ida Ann Zweig

**Millicent "Millie" Gorsky**  
 Wife of Leonard Gorsky  
 Mother of Bob Gorsky and Richard Gorsky

**Elizabeth Heald**  
 Mother of Jill Bahen, John Heald, Joy McGarry and Hope Merritt  
 Sister of Elmer Keaton and Dot Tompkins

**Suzanne "Suzie" Platt Kornblit-Rosenberg**  
 Sister of Mel Platt

**Joy Mankoff**  
 Mother of Doug Mankoff and Jeff Mankoff

**Arthur Morganstern**  
 Father of Rhoni Golden and Debby Jones

**George Nachman**  
 Husband of Marilyn Nachman  
 Stepfather of Brooke Rawdin Arce and Blake Rawdin

**Earl Barry Pachter**  
 Husband of Rosemary Pachter  
 Father of Stacey Hoppenstein and Allison Rosen  
 Brother of Sue Crawford

**Henry R. Pearson**  
 Husband of Rebecca C. Pearson  
 Father of Lisa N. Pearson  
 Brother of Janie Pearson

**Patricia "Pat" Peiser**  
 Mother of Nancy Krieger and Richard Peiser

**Joie Lynn Dominus Reavis**  
 Sister of Marc Dominus  
 Mother of Ananda Reavis Bankoff  
 Stepmother of Caroline Geis and Martin Reavis

**Marion Rosemore**  
 Mother of Margaret Freeman, Susan Rosemore Gravlee, Dr. Martha Rosemore Morrow, Dr. Andrew Rosemore and Lance Rosemore

**Kitty Satinsky**  
 Mother of Ellen Larkin and Mark Satinsky

**Susan Schwartz**  
 Mother of Alec Schwartz, Danielle Schwartz, Dara Schwartz, Derek Schwartz, Carlee Schwartz and Dana Sutton

**David Teichman**  
 Partner of Georgie Miara  
 Father of Valerie Darpa and Laurent Teichman  
 Brother of Charles Teichman and Simon Teichman



## CONVERSIONS



Yolanda Brunson



Amir Ellis

## MAZEL TOV



Natalie Vilensky at blessing before making *aliyah*



Stephanie Fine



Kimberly Rosenberg

## SHINE *the light*

### SUPPORT AND RESOURCES FOR SPIRITUAL AND MENTAL WELL-BEING

#### Grief Support on Zoom

First Tuesday of the month, 12-1PM: Sept. 3,  
Oct. 1, Nov. 5

#### In-Person Grief Support

Last Tuesday of each month, 12-1PM: Sept. 24,  
Oct. 29

#### Jewish Family Service Support Groups

Our community partner, Jewish Family Service, helps adults, children and families navigate mental health challenges and coping skills through a variety of support groups. To learn more, visit [jfsdallas.org](http://jfsdallas.org).

#### Substance Abuse Support for Friends and Families

Thursdays every week from 5:30-6:30PM in person and on Zoom. Contact for more information and Zoom link: Freda Heald, [fredaheald@yahoo.com](mailto:fredaheald@yahoo.com)

#### Here for You

Are you or someone you know struggling with infertility or going through IVF? We are exploring

the possibility of a support group. If interested please reach out to Meredith Pryzant, [mpryzant@tedallas.org](mailto:mpryzant@tedallas.org).

#### No Barriers

Finances should never be a barrier to participation in Temple life. Confidential financial assistance is available for most Temple events, tuition and dues.

For information or Zoom links, please contact Meredith Pryzant, Director of Member Support, [mpryzant@tedallas.org](mailto:mpryzant@tedallas.org) | 214.706.0000, ext. 3802



# Take a Tour of the Pollock Family Media Wall

The Pollock Family Media Wall brings Temple’s core values to life in creative ways. We encourage you to dig in and explore using the easy touch screen. Just tap the screen anywhere and the following five pathways will lead you to an exciting presentation of Temple’s history, values and people.



## Our influence

An up-to-date view of the profound impact our Temple members have had on Dallas since its earliest days.

## Our Story

Explore important milestones in Temple’s history, the history of Dallas and Texas, and U.S. and world history. Test your knowledge of Temple’s history with a fun, interactive quiz. Temple members share their unfolding story of through their own digital keepsake pages, with photos, text and genealogical information.



## Our Sacred Values

Learn and experience more about Temple’s Clergy, Spaces, Art, Community and Social Justice. Focus on Temple’s connections to Israel, Confirmation classes through the decades and adult b’nai mitzvah cohorts.

## Our People

Photo essay of 102 black-and-white portraits of Temple members, sharing another dimension of our story through text and images.



## Our Supporters

Comprehensive list of the generous donors to the TE150 Endowment Campaign and Temple Emanu-El Annual Fund.



Annabel Brooklyn Wilson  
Daughter of Rachel and Scott Wilson

My favorite thing about ECEC is that I have a really nice friends and teachers and something I remember from ECEC is when I would have recess and I would play in the playhouse or on the small hill.

I had a baby naming on August 9, 2015 when I was 1. It was in my house. The Rabbi was Rabbi Kimberly Herzog Cohen. A memory that my dad has is how much I loved clapping and how much I smiled, especially when I saw my mom and my dad. My mom remembers that my favorite toy was a butterfly, so my baby naming was butterfly-themed, and we celebrated my first birthday, too.

My first name Annabel came from my mom's Grandma Alice and my middle name Brooklyn came from my mom's other grandma, Grandma Bea (short for Beatrice). Also, a lot of my mom's family was born in Brooklyn.

I like being Jewish because you have a lot of fun holidays and traditions.

TAP HERE TO CONTINUE

G K L M S R W Our Story Trivia My Temple Story

# Share Your Temple Story

BE PART OF THE BARBARA ZALE CENTER FOR LIVING HISTORY!

**W**e're creating a vibrant tapestry of our community's history, and we need your unique stories to bring it to life. The Pollock Family Media Wall has a section for congregants to share their family photos, Temple stories and list the generations of their family.

### Why Your Temple Story Matters

- **Celebrate Our Past:** Your memories capture the essence of our shared journey.
- **Inspire Future Generations:** Let your experiences guide and motivate the next generation.
- **Strengthen Our Bond:** Sharing stories fosters deeper connections within our community.

### What We're Looking For

- **Memorable Events at Temple:** Unforgettable moments from Temple celebrations, holidays or services.
- **Personal Milestones:** Your family's special milestones and experiences within our community.
- **Everyday Joys:** Small, heartwarming moments that capture the spirit of our Temple life.
- **Photos:** Family photos, memorable events of different stages of life, and other activities you enjoy at Temple.

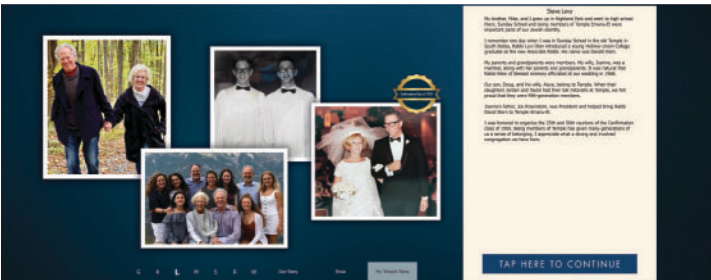
### How to Contribute

1. **Write It Down:** Jot down your story in a few paragraphs of about 400 words or less.
2. **Add Photos:** Include any photos that help tell your tale.
3. **Visit the My Temple Story Submission Form:** Submit your contributions by completing the form on our website.



**Need Help?** We're here to assist! If you need help writing or digitizing photos, contact Thomas Booe at [tbooe@tedallas.org](mailto:tbooe@tedallas.org). Let's preserve our rich history together. Your story is a vital piece of our collective memory.

Thank you for being an essential part of our Temple community! The Barbara Zale Center for Living History will be open from 9AM to 1PM on Rosh Hashanah and from 12-3PM on Yom Kippur Day and docents from the Center for Living History will help you explore.



# Gifts of Memory, Honor and Gratitude



## OUR CONGREGATION

### Dora Aronson Helping Hands Fund

*Distributions by Rabbi David Stern to individuals in need of financial assistance, particularly in dire situations*

### Memory of Bill Berry

by Cheryl and Randy Colen

### Memory of Paul Bierbrier

by Julie & David Kronick

### Memory of Hilda Burtis

by Marguerite Burtis & Peter Vogel

### Memory of Joy Mankoff

by Irman Grossman

### Memory of Joy Mankoff

by Cheryl & Randy Colen

### Memory of Si Sherman

by Carla Sherman

### Memory of Philip Silverberg

by Cathy & Jim Greenfield

### Memory of Joseph Solomon

by Sister & Joel Steinberg

### Memory of Roslyn Sureck

by Sureck/Chiu Family

### Appreciation of Cantor

### Vicky Glikin

by Marguerite Burtis & Peter Vogel

### Appreciation of Rabbi

### David Stern

by Peter Vogel & Marguerite Burtis

### Anne and Sam Kesner Caring Congregation Fund

*Assistance for Temple members through all phases of life, including hospitalization, elder care, military service, mental health challenges and grief*

### Memory of Norm Bleicher

by Kemberly Merritt

### Memory of George Nachman

by Anita Samuel

### Memory of Ida Mintz Nuzie

by Martin Mintz

### Memory of Stephen Louis

### Brtis Vogel

by Irene and Buddy Raden

### Susan Salom Clergy Good

### Works Fund

*Distributions to charitable organizations, individuals in need or community causes by Temple's clergy*

### Memory of Jim Baron

by Martin Sinkoff

by Liz Baron

### Memory of Jim Baron

by Frada & Alan Sandler

### Memory of Irwin B. Behrendt

by Lynn & Bob Behrendt

### Memory of Bill Berry

by Eilene & Thomas Toughey

### Memory of Paul Bierbrier

by Shari & Jay Tobin, Nancy & Solomon Israel, Stewart Cohen & Kimberly Eting, Eric Bierbrier & Kristy Parker

### Memory of Norm Bleicher

by Kimberly & Avrum B. Schonwald Charitable Fund

by Andrea Wolf

### Memory of Peter Casillas

by Bobbie & David Repp

by Kim & Avrum Schonwald

by Rosie Stromberg

### Memory of Lois Miller

### Daneman

by Gay & Philip Daneman and Family

### Memory of Millicent Gorsky

by Carl Weisbrod

### Memory of Suzanne Platt

### Kornblit-Rosenberg

by Jody & Mel Platt

### Memory of Bill Levy

by Allison & Alan Levy

### Memory of George Nachman

by Marilyn Nachman

by Ellen & Lee Salzberger

### Memory of Earl Pachter

by Pachter, Hoppenstein, & Rosen Families

### Memory of Hank Pearson

by Ettie & Melvin Weinberg

### Memory of Patricia Peiser

by Nancy Krieger, Richard Peiser, and Family

### Memory of Joni Ross

by Shari & Ira Nevelow

Philanthropic Fund of DJCF

### Honor of Rabbi Kimberly

### Herzog Cohen

by Fran Berry

### Conversion of Laura Pietzsch

by Jennifer Morin Cassell

by Judy & Russell Silverstein

by Mike Kunen & Brian Stock

by Joel Weinthal

by Bonnie Rosenberg & Joseph

Zimmerman

### Bris of Lior Kolni-Reed

by Leah Beth & Harold Kolni

### Birth of Connor Kline

by Wendy & George Palmer

### Bar Mitzvah of William

### Silberman

by The Silberman Family

### Appreciation of Cantor Vicky

### Glikin

by Lynn & Bob Behrendt

by Wendy & Marc Stanley

### Appreciation of Rabbi

### Kimberly Herzog Cohen

by Nancy & Solomon Israel

by Evelyn & Andy Rosemore

### Appreciation of Rabbi Michael

### Lewis

by Susie and Joel Litman

by Patricia & Richard Prager

### Appreciation of Cantor Leslie

### Niren

by Congregation B'Nai Jehoshua

Beth Elohim

by Richard & Patricia Prager

### Appreciation of Rabbi Debra

### Robbins

by Lynn & Bob Behrendt

by The Essenfeld Girls

by Harriet & Larry Meyerson

by Elaine & Ken Stillman

### Appreciation of Rabbi David

### Stern

by Lynn & Bob Behrendt

by Patricia Fagadua

by Amber Pierce & Sam

Johnson

by Nancy Krieger, Richard Peiser, and Family

by Wendy & Marc Stanley

by Maddy & Mark Unterberg

### Appreciation of Cantor Hallie

### Weiner

by Nancy Krieger, Richard Peiser, and Family

### Speedy Recovery of Wes Hart

by Ettie & Melvin Weinberg

### Naming of Julianna Dandes

by The Dandes Family

### Naming of Leo Goldman

by Susie and Joel Litman

### Naming of Leo Kahn

by Shelby & Kyle Kahn

### Naming of Hannah Paull

by Elena & Andrew Paull



## OUR TEMPLE AND CEMETERY

### Rabbi Gerald J. Klein

### Memorial Cemetery Fund

*Beautification and*

*improvements of the Temple*

*Emanu-El Cemetery*

### Memory of Mimi Goldman

by Lawrence Goldman

### Memory of Sylvia Rosenberg

### Hoffman

by Arlene Lemark

### Memory of Mark Kolodny

by Jane & Marc Cohen

### Memory of Sallie Frauman

### Leventhal

by Milton Leventhal

### Memory of Jeff Phillips

by Sandy Phillips and family

### Memory of Kace Phillips

by Sandy Phillips and Family

### Memory of William N.

### Reisfeld

by Donna Schuback

### Memory of Elena Weinstein

by Helga & Gerardo Weinstein

### Memory of Herbert Weinstein

by Helga & Gerardo Weinstein

### Rabbi Gerald J. Klein

### Garden Fund

*Maintenance of the*

*Klein Garden*

### Memory of Maria Lola Gomez

by Dolores & Lawrence Barzune

### Memory of Milton Levy

by Joanne & Steve Levy

### Memory of George Nachman

by Joanne R. & Steve Levy

Family Philanthropic Fund

### Memory of Esther Stein

by Dr. & Mrs. Lawrence

Barzune



## GENERAL

### Temple Emanu-El General

### Operating Fund

*Support of Temple's general*

*programs and events*

### Memory of Jim Baron

by Sally & Bob Rosen

by Jackie & Steve Waldman

### Memory of Maurice Beck

by Jay Beck

### Memory of Paul Bierbrier

by Risa Gross

by Jan & Tom Timmons

### Memory of Norm Bleicher

by Jan & Tom Timmons

### Memory of Morris Blyweiss

by Marlene & Richard Marks

### Memory of Eugene Bock

by Fonda Glazer

### Memory of Peter Casillas

by Carl Weisbrod

### Memory of Myron Fine

by Brooke Fine

### Memory of Marsha S.

### Fischman

by Lawrence Fischman

### Memory of Marvin Gerard

by Jan & Tom Timmons

### Memory of Wolf Gloger

by Dawn Shogren

### Memory of Harvey Sheldon

### Goldsmith

by Macki & Paul Ellenbogen

### Memory of Herbert Goldstein

by Susan & Larry Goldstein

### Memory of Martin Golman

by Kim & Jeff Chapman

### Memory of Martin Golman

by Stephanie & Scott Rosuck

### Memory of Frank Graff

by Lotty & Bobby Lyle

### Memory of Lester A. Levy Sr.

by Karen & Walter Levy

### Memory of Eve K. Lipinsky

by Jo Ann & Bob Becker

### Memory of Beatrice Malow

by Barbara Toronto

### Memory of Joy Mankoff

by Brad Blumenthal

by Sandy & Barry Diamond

by Beth & Jim Gold

by Marilyn Golman

by Karla & Larry Steinberg

### Memory of Mildred Munves

by Lois Golman

### Memory of George Nachman

by Barbara & Richard Toronto

### Memory of Marion Rosemore

by Jan & Tom Timmons

### Memory of Sam Rubenstein

by Fonda Glazer

### Memory of Irving Sheinfeld

by Debbie & David Sheinfeld

### Memory of Archie Skibell

by Andrea & Richard Skibell

### Memory of Bertha Skibell

by Andrea & Richard Skibell

### Memory of Jack Sobol

by Carol & Barry Sobol

### Memory of Joseph Solomon

by Karla & Larry Steinberg

### Memory of Nita Spitzer

by Lotty & Bobby Lyle

### Memory of Sig Spitzer

by Lotty & Bobby Lyle

### Memory of Sid Stahl

by Juliette & Harold Goodman

### Memory of Janelle Sterry

by Milford Sterry

### Memory of David Teichman

by Patricia Fagadua

### Memory of Stephen Louis

### Brtis Vogel

by Jan & Tom Timmons

**Memory of Henry D. & Norma Schlinger**  
by Henry D. Schlinger Trust  
**Memory of Helen Weitman**  
by Laurie Spitz



## MUSIC AND PRAYER

### Music Fund

*Enhancement of Temple music programs*

**Memory of Bill Berry**  
by Jan & Tom Timons  
**Memory of Norm Bleicher**  
by JoAnn & Bob Becker  
**Dianne & Kevin Owens**  
by Vicki & Charlie Redden  
by Jacque & Myron Schwitzer  
by Barbara & Edward Stone  
**Memory of Peter Casillas**  
by Susan Regan Donnerfield  
and Family  
**Memory of Gertrude M. Davis**  
by Joan Salzberger  
**Memory of Wolf Gloger**  
by Betsy & Todd Teitell  
**Memory of Elizabeth Heald**  
by Jan & Tom Timons  
**Memory of Dell Kaplan**  
by Wendy & George Palmer  
by Joyce & Joe Rosenfield  
**Memory of Suzanne Platt Kornblit-Rosenberg**  
by Jan & Tom Timons  
**Memory of Joy Mankoff**  
by Connie Rudick  
**Memory of Lisa Mellow**  
by Nancy Wiener Marcus  
**Memory of Earl Pachter**  
by Connie Rudick  
by Jan & Tom Timons  
**Memory of Hank Pearson**  
by Carl Weisbrod  
**Memory of Marilyn Rich**  
by Jacque & Myron Schwitzer  
**Memory of Marion Rosemore**  
by Michelle & Ricky Rickoff  
**Memory of Helen Blyweiss Rosenberg**  
by Marlene & Richard Marks  
**Memory of Roberto Vela**  
by Alan D Budman  
by Gary M Smith  
**Honor of Cantor Hallie Weiner**  
by Ettie & Melvin Weinberg  
**Birthday of Mike Sheff**  
by Jacque & Myron Schwitzer

**Appreciation of Cantor Hallie Weiner**  
by Fran Berry  
by Michael, Sharon, Joshua & Danny Karno



## ADULT PROGRAMS

### Katherine F. Baum Adult Education Fund

*Support for adult education programs*

**Memory of Norm Bleicher**  
by Peggy & Dave Millheiser  
**Memory of Wolf Gloger**  
by Don & Joanne Epstein  
**Memory of Charles Marks**  
by Marlene & Richard Marks

### Henry D. Schlinger Ethics Symposium Endowment Fund

*Support of the ethics symposium*

**Memory of Marvin Gerard**  
by Sylvia & Malcolm Cohen  
**Memory of Phyllis Somer**  
by Sylvia & Malcolm Cohen

### Priscilla R. Stern Memorial Fund

*Support of literacy projects in the general and Jewish communities*

**Memory of Joie Lynn Dominus Reavis**  
by Judi & Randy Ratner  
**Memory of Irene Edelman**  
by Sheila & Stephen Stieglitz  
**Memory of Richard Lerer**  
by Harriet & Steve Goodman  
**Memory of Joy Mankoff**  
by Lynn & Bob Behrendt  
**Memory of Max Rosmarin**  
by Suellen & A.J. Rosmarin  
**As a Contribution**  
by Felicia & David Morris  
**Appreciation of Rabbi David Stern**  
by Shari, Steve, Reghan, Sloane  
and Brady Goldberg

### (ATiD) Young Adults Fund

*Support of Jewish engagement of young adults in their 20s and 30s*

**Memory of Julius Palefsky**  
by Kathy & Morris Palefsky

**Memory of Sammy Rosenblum**  
by Sylvia & Malcolm Cohen



## SOCIAL JUSTICE

### Hunger Relief Fund

*Collection of funds for hunger relief throughout the year, especially during High Holy Days and Passover*

**Memory of Jack Michael Abramson**  
by Faye & Howard Polakoff  
**Memory of Paul Bierbrier**  
by Pam & Robert Karpel  
**Memory of Joseph Marvin Bloom**  
by Jacque & Fred Roberts  
**Memory of Jeffrey Scott Donsky**  
by Linda, Robin, Matt & Joy Donsky  
**Memory of Ida Fox**  
by Evelyn & Eugene Fox  
**Memory of Martin Golman**  
by Helen Feldman  
**Memory of Gloria Kersh**  
by Susan & Daryl Beck  
**Memory of Joy Mankoff**  
by Ruth Robinson  
**Memory of George Nachman**  
by Debbie Levy & Barry Rothschild  
**Memory of Steve Oppenheimer**  
by Tricia & Jim Krohn  
**Memory of Meyer Rachofsky**  
by Helen Feldman  
**Memory of Jordan Roseman**  
by Barbara Roseman  
**Memory of Marion Rosemore**  
by Helen Feldman  
**Bat Mitzvah of Marin Rosenberg**  
by Jacque & Fred Roberts  
**Bar Mitzvah of Landry Rosenberg**  
by Jacque & Fred Roberts  
**Appreciation of Rabbi Kimberly Herzog Cohen**  
by Jacque & Fred Roberts  
**Appreciation of Roz Katz**  
by Jacque & Fred Roberts  
**Appreciation of Cantor Leslie Niren**  
by Jacque & Fred Roberts  
**Speedy Recovery of Arlene Steinfeld**  
by May Sebel

### The Jill Stone Tikkun Olam Fund

*Support of Temple's social justice programs including initiatives, advocacy, projects and lectures*

**Memory of Beverly Tobian**  
by Julie Ann Cohn & David Rolston

**Memory of Paul Bierbrier**  
by Debbie & Howard Haile  
by Lynn & Bob Behrendt  
**Memory of Norm Bleicher**  
by Sheryl & Gordon Bogen  
by Suzi & Jack Greenman  
**Memory of Alan Gold**  
by Lynn & Bob Behrendt  
**Memory of Harvey Sheldon Goldsmith**  
by Carl Weisbrod  
**Memory of Joy Mankoff**  
by Betty & Jay Lorch  
by Gary Kahn

by Maddy & Mark Unterberg  
**Memory of George Nachman**  
by Maddy & Mark Unterberg  
**Memory of Gail B. Nusinow**  
by Sylvia & Malcolm Cohen  
**Memory of Patricia Peiser**  
by Maddy & Mark Unterberg  
by Sylvia Sue Owens  
**Memory of Ann Zar Taub**  
by Rabbi Joshua & Debbie Taub  
**Memory of Arthur L. Taub**  
by Rabbi Joshua & Debbie Taub  
**Memory of David Teichman**  
by Jill & Gary Stolbach  
**Memory of Bridget Tulbert**  
by Mindy & Mark Tulbert  
**Conversion of Laura Pietzsch**  
by Sheryl & Gordon Bogen  
**Appreciation of Rabbi David Stern, Bob Krakow, & Jeana Foxman**  
by Temple Sinai Atlanta  
**Appreciation of Rabbi Debra Robbins**  
by Julie Ann Cohn & David Rolston

**Appreciation of Joshua Taub**  
by Mackie & Alan Kazdoy  
**As a Contribution**  
by Cathy & Howard Gilbert

### Social Justice Youth Education Fund

*Support of worthwhile educational causes for youth in need*

**Memory of Jim Baron**  
by Betsy & Todd Teitell

**Memory of Martin Golman**  
by Cathy Bernstein  
**Memory of Joy Mankoff**  
by Gayle Johansen  
by Joan Salzberger  
**Memory of George Nachman**  
by Joan Salzberger  
by Suzi & Jack Greenman  
**Memory of Julie Reichl**  
by Betty & Jay Lorch

### Vickery Meadow Food Pantry

*Support of food and fresh produce to Vickery Meadow residents*

**Memory of Lester Adler**  
by Annette Corman  
**Memory of Robert Adler**  
by Annette Corman  
**Memory of Joy Mankoff**  
by Annette Corman



## YOUTH AND EARLY CHILDHOOD EDUCATION

### David B. Shalom Religious Education Fund

*Financial assistance for religious education of Temple members*  
**Memory of Norm Bleicher**  
by Linda & Garry Kahalnik

### Early Childhood Education Center (ECEC) Fund

*Support of ECEC programs*  
**Memory of Norm Bleicher**  
by Marcy & Michael Grossman  
**Memory of Cary Friedlander**  
by Fonda & Gary Gossen  
**Memory of Marvin Gerard**  
by Cindy & Barry Zale and Julie & George Tobolowsky

**Memory of Laurie Gidlow**  
by Doran Beckman  
by Janie & Bruce Bitterman  
by Joan Scott Curtis  
by Mary Beth Dimijian  
by Jimmy & Dale Glenn  
by Paige Pando Kirkman  
by Michele & Mike Lattman  
by Hillary Levy & Family  
by Julie & Jay Liberman  
by Cathy Maier  
by Joyce & Joe Rosenfield  
by Anita & Bob Samuel  
by Marcia B Smith  
by Harriet & Vic Velevis  
by Carol Wickstrom  
by Doris Willis

**Memory of Leonard Kolodny**  
by Randi Cohen  
by Jamie & Ed Tonkon  
**Memory of Mark Kolodny**  
by Kathryn & David Seay  
**Memory of Mark Kolodny**  
by Lynn & Jay Staub  
**Memory of Lenore H. Litman**  
by Susie & Joel Litman  
**Memory of Harold Novin**  
by Franchelle & Richard Hirsch

### Gina Rosenfield Levy Greene Family Camp Scholarship Fund

*Financial assistance to families for Greene Family Camp*  
**Memory of Carol Dickey Watson**  
by Marti, Max, and Jake Rosenfield

### Lomdim Project

*Support of an open and inclusive community for YL+E children with special needs*  
**Memory of Wendy Blum**  
by Beverly & Mark Naboshek

### Metz Youth Fund

*Scholarships for Jewish activities sponsored by Temple or other Jewish organizations*  
**Birthday of Karlyn Herlitz**  
by Laurie Sutkin

### Martin & Charlotte Weiss

**Religious School Fund**  
*Scholarships for YL+E fees, books and additional expenses*  
**Memory of Norman Chaiken**  
by Lynn & Jay Staub  
**Memory of Robert Stuart Chaiken**  
by Lynn & Jay Staub  
**Memory of Martin Golman**  
by Carol Hirsch & Family

### Paul and Nethie Lande Summer Camp Scholarship Fund

*Scholarships for children to attend a Jewish summer camp*  
**Memory of Martin Golman**  
by Cathy & Alvin Miller

### Shor/Lowenstein Youth Scholarship Fund

*Financial assistance to families for participation in youth programs*  
**Memory of Jim Baron**  
by Ruthie & Alan Shor

WITH GREAT LOVE, JOY AND PRIDE

CANTOR VICKY GLIKIN &  
VLAD LEYBOVICH

INVITE YOU TO JOIN THEM AS THEIR SON

# SAMUEL NOAM

IS CALLED TO THE TORAH AS A BAR MITZVAH

SATURDAY, NOVEMBER 2, 2024

10:30AM | STERN CHAPEL

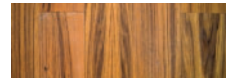
SHABBAT NOACH | שבת נח

RSVP: [tedallas.org/events](https://tedallas.org/events) | Luncheon following.  
Please bring a canned good to feed the hungry.

**Memory of Alan Gold**  
by Judy & Benton Markey  
**Memory of Joy Mankoff**  
by Judy & Benton Markey  
**Memory of Ronald Mankoff**  
by Judy & Benton Markey  
**Memory of Sid Stahl**  
by Judy & Benton Markey  
**Honor of Debbie Andres**  
by Ruthie & Alan Shor  
**Honor of Jamie Hayden**  
by Ruthie & Alan Shor  
**Honor of Lisa Lieberman**  
by Ruthie & Alan Shor  
**Conversion of Yolanda  
Brunson**  
by Robin Kosberg  
**Conversion of Kim Rosenberg**  
by Robin Kosberg  
**Birthday of Mike Ablon**  
by Ruthie & Alan Shor  
**Birthday of Michelle Brown**  
by Ruthie & Alan Shor  
**Birthday of Julie Fields**  
by Ruthie & Alan Shor  
**Birthday of Danna Hayden**  
by Ruthie & Alan Shor  
**Birthday of Rabbi Nancy  
Kasten**  
by Ruthie & Alan Shor  
**Birthday of Betsy Kleinman**  
by Ruthie & Alan Shor  
**Birthday of Steven Lieberman**  
by Ruthie & Alan Shor  
**Birthday of Mark Masinter**  
by Ruthie & Alan Shor  
**Birthday of Rebecca Masinter**  
by Ruthie & Alan Shor  
**Birthday of Wendy Stanley**  
by Ruthie & Alan Shor  
**Birthday of Larry Steinberg**  
by Judy & Benton Markey  
**Anniversary of Debbie &  
Marc Andres**  
by Ruthie & Alan Shor  
**Anniversary of Julie &  
David Fields**  
by Ruthie & Alan Shor  
**Anniversary of Beth &  
Jim Gold**  
by Ruthie & Alan Shor  
**Anniversary of Rebecca &  
Mark Masinter**  
by Ruthie & Alan Shor

**David Jay Leibs Video  
Collection**  
*Support to purchase media  
of Jewish content in the  
Alex F. Weisberg Library*  
**Memory of Norm Bleicher**  
by Arlene Leibs

**As a Contribution**  
by Pauline Weisberg & Harris  
K. & Lois G. Oppenheimer  
Foundation



**WRJ**  
*Funds to support activities of  
Women of Reform Judaism*

**YES Fund of Sisterhood**  
*Support of the Youth, Education  
and Service programs of  
Women of Reform Judaism*  
**Memory of Peter Casillas**  
by Minnette Klein  
by Celia Saunders  
**As a Contribution**  
by Emily Atlas  
by Tammy Cancela  
by Bonnie Rosenberg  
by Barbara Stone  
by Jacquie Schwitzer

**Freda Gail Stern Fund**  
**As a Contribution**  
by Emily Atlas  
by Tammy Cancela  
by Bonnie Rosenberg  
by Jacquie Schwitzer  
by Bonnie Rosenberg

**Yolanda Clark Fund**  
**As a contribution**  
by Emily Atlas  
by Tammy Cancela  
by Bonnie Rosenberg  
by Barbara Stone  
by Jacquie Schwitzer

**Women of Reform Judaism**  
**Memory of Peter Casillas**  
by Minnette Klein  
by Celia Saunders  
**As a Contribution**  
by Emily Atlas  
by Tammy Cancela  
by Bonnie Rosenberg  
by Jacquie Schwitzer  
by Bonnie Rosenberg

# ANNUAL FUND SPOTLIGHT

By Livia Stevenson

The Temple Emanu-El Annual Fund is Temple's highest fundraising priority every year. The dollars raised help supplement Temple's operating budget and help provide support to all our community. Each issue, the Window features Annual Fund leaders and supporters who give generously of their time and financial resources.

## Lindsay Shipp

**L**indsay Shipp and her husband, Blake, joined Temple in 2017 with their two children, Poppy and Coco, and have felt at home ever since. As she begins her role as the 2024-2025 Annual Fund Chair, we caught up with Lindsay to learn more about her Temple story.

### **Tell us more about you and your family's connection to Temple. How has Temple impacted your life?**

My mom grew up in Dallas, where her family was active at Temple. We had the joy of attending our cousins' bar and bat mitzvahs and weddings here, and I loved bringing my University of Texas friends to Temple during the High Holy Days.

When I met my husband, Blake, Temple played a crucial role in educating him about Judaism and in our journey to start a Jewish family. Temple has been a part of our lives through our happiest and saddest moments.

Blake and I joined Temple when we married and started considering expanding our family. Our involvement deepened when our daughter, Poppy, began at the Early Childhood Education Center at age 2. We fell in love with the staff, the grounds, the family gatherings and the friendships we formed. Temple soon became our second home.

### **What made you say yes to chairing the 2024-2025 Annual Fund?**

When Mary Lee Broder, Beth Gold and my fearless leaders, Staci Mankoff and Sandy Diamond, asked me to be the vice chair of the 2023-2024 Annual Fund and then the chair of the 2024-2025 Annual Fund, I immediately said yes. I admired these VERY strong women who had shared this role before me and who were so involved in the Annual Fund — I feel fortunate to have the opportunity to work and learn alongside each of them.

### **Please share a favorite Temple memory?**

Hearing the squeals of excitement and giggles that my girls get EVERY TIME we pull into the Temple parking lot and hearing them say, 'we are home'.



# Your Voice Matters: Vote!

The right to fair and open elections is not only an American value; it's a Jewish value expressly stated in the Talmud: "A ruler is not to be appointed unless the community is first consulted."

Temple Emanu-El continues to advocate for 100% voting by all members of the congregation, and has been working on a variety of nonpartisan activities to support this goal. See below for the ways you can get involved!

For information, contact Erica Matsil, Director of Social Justice and Family Engagement, [ematsil@tedallas.org](mailto:ematsil@tedallas.org)

## Write Postcards

The Religious Action Center of Reform Judaism is partnering with the Center for Common Ground's Reclaim Our Vote Campaign to send postcards to voters in states where there is a significant number of people of color and racial gaps in voter participation. [rac.org/take-action/every-voice-every-vote](https://rac.org/take-action/every-voice-every-vote)

## Attend Forums

Learn the issues and get to know the candidates in various forums in the area. Jeff Kitner, a Temple member and Chief Operating Officer of the North Dallas Chamber of Commerce, is moderating at least three forums with candidates from both parties in federal and state races. All events are held at the Chamber, 5710 Lyndon B. Johnson Freeway, Ste. 100, from noon to 1 PM:

- **October 4** | US House of Representatives, District 32: Julie Johnson and Darrell Day
- **October 9** | Texas Legislature, District 115: Cassandra Hernandez and John Jun
- **October 15** | Texas State Board of Education, District 12: Pam Little and George King

**Register at [northdallastxcoc.weblinkconnect.com/atlas/calendar](https://northdallastxcoc.weblinkconnect.com/atlas/calendar)**

## Become a Volunteer Deputy Registrar

Texas residents can help increase voter registration by becoming Volunteer Deputy Registrars. This designation allows adults to register voters.

[votetexas.gov/register-to-vote](https://votetexas.gov/register-to-vote)

Temple contact: Erica Matsil, [ematsil@tedallas.org](mailto:ematsil@tedallas.org)



## Join March to the Polls

Founded in 2018, March to the Polls is a voter empowerment organization that works in the schools and greater community to register voters and provide voter education. Temple members Robert Elkin and Sheila Steiglitz are involved in leadership. [marchtothepolls.org](https://marchtothepolls.org)

## Stay Informed

Voting resources are available on the Temple website and [dallascountyvotes.org](https://dallascountyvotes.org), both great places to learn more about polling places, voter registration and the Jewish value of voting. [tedallas.org/outreach/your-voice-your-vote](https://tedallas.org/outreach/your-voice-your-vote)



# Showing Up for Our Neighbors

Temple has been recognized by the North Texas Food Bank and HIAS for its efforts to make the world a better place. Additionally, Temple will be a satellite drop-off site for Jewish Family Service's annual diaper drive. For information on all three projects, contact Erica Matsil, Director of Social Justice and Family Engagement, [ematsil@tedallas.org](mailto:ematsil@tedallas.org).

## Good to Grow: North Texas Food Bank

The hunger relief organization has awarded a grant of \$18,350 to the Jill Stone Community Garden at Temple Emanu-El. The money will be used to expand the garden's capacity by adding more controlled environments such as a hoop house and additional greenhouse for the year-round production of nutritious foods for the diverse Vickery Meadow community.

The grant also provides funds to continue the Nudge Pantry in the Vickery Meadow community, a program that provides nutrition education and community building in a food pantry setting. The congregation and community partners for the garden are invited to a celebration information session at 9:30AM on Sunday, September 8 in the garden. Register at [tedallas.org/events](http://tedallas.org/events)

## 'Beacon of Light and Hope:' HIAS

HIAS has awarded Temple its Pathways Leadership Award for our efforts to help refugees resettle in Dallas. The organization was founded to help Jewish people fleeing pogroms in Europe and has evolved into an international organization to help refugees, asylum seekers and forcibly displaced people. For many years, Temple has assisted in efforts to find housing and employment for refugees.

"Knowing how hard this past year has been for the Jewish people, you have been a steadfast and unwavering beacon of light and hope," HIAS said in awarding the honor to Temple. "You have embraced a central tenet of Torah to welcome the stranger. Communities like yours represent the best of Jewish values lived in the world."

## Comfort for Babies and their Parents: Jewish Family Service

Temple has been invited to be a satellite site for the 14th annual Diaper Shower for Jewish Family Service. During the month of September, please bring donations of disposable diapers and wipes to Temple's bin on the Hillcrest entrance ramp. The organization has set a goal of collecting 100,000 diapers and wipes.



**"You have embraced a central tenet of Torah to welcome the stranger. Communities like yours represent the best of Jewish values lived in the world."**



# Out of our Comfort Zone: Climate Change and Judaism



Join Daniel Cohan, Ph.D., climate change specialist and author of “Confronting Climate Gridlock: How Diplomacy, Technology, and Policy Can Unlock a Clean Energy Future,” for a weekend of learning and conversation drawing on lessons from his book and connecting them to our Jewish values.

**Shabbat Evening Service including the Schlinger Ethics lecture:  
Out of our Comfort Zone: Climate Change and Judaism**  
Sept. 13 | 6:15PM

**Lunch-and-learn with Daniel Cohan**  
Sept. 14 | 12PM | Weiss Youth Wing

Dr. Cohan, who grew up at Temple, is an associate professor of environmental engineering at Rice University. He leads a research group that studies the connections among air pollution, climate change and energy.

“What makes confronting climate change so central to the environmental dimension of *tikkun olam* is that it touches so many aspects of our lives — the cleanliness of our air and water, our safety from storms and droughts, our own health and the survival of other species. And because what we emit today can warm the climate for centuries, taking action now is part of our obligation to our children and future generations, *l’dor vador*.”

*In gratitude: This scholar-in-residence Shabbat honors the memory of Henry D. Schlinger, z”l, known for his personal integrity and outstanding service to the congregation and community. Schlinger served as president of Temple Emanu-El and the Dallas Bar Association.*

# One Year Later

HEARTBREAK AND HOPE BOOKEND THE SOLEMN ANNIVERSARY OF OCTOBER 7.

Each of us approaches the arrival of October 7, 2024 in a different way. But none of us is immune to the human tragedy that occurred on this day in 2023, and the unfolding events of the year that has passed.

We invite you to join Temple in supporting the Jewish Federation of Greater Dallas community commemoration event at 7PM on October 7 at Congregation Shearith Israel. We'll come together to honor the memories of those we have lost, stand in solidarity with Israel and pray for a peaceful resolution.

Registration is required to attend, and multiple layers of security will be provided.

**Register:** [bit.ly/oct7commemoration](https://bit.ly/oct7commemoration)

## Thinking of Them Always

The following prayer is recited often at Shabbat services and Temple gatherings. Keep it in your hearts as we approach the one-year anniversary of the Hamas attack on Israel.

## Prayer for Redemption of Hostages

By CCAR members Rabbis Ofer and Rachel Sabath Beit Halachmi

*Our God, the One who raised Joseph up from the pit, be  
“a refuge for the oppressed, a refuge in times of trouble.”  
(Psalm 9:10)*

Send complete rescue and full redemption to all those held captive by the enemy.

Strengthen their spirit and bring them our prayers that they be protected from all harm.

Implant understanding in the heart of the enemy that they may return the captives in wholeness of body and spirit.

Grant wisdom to the Israel Defense Forces that they may secure freedom for the captives without loss of life. Grant strength of spirit and courage of heart to all the sons and daughters of Abraham, Sarah and Hagar to release bonds of captivity and allow us all to live in freedom.

*“They shall call upon Me, and I will answer them; I will be with them in distress; I will rescue them, and honor them.”  
(Psalm 91:15).*



### ARMS OPEN WIDE FOR ISRAEL

**2023**

- October 7: Memorial service at Temple...
- October 8: Community gathering...
- October 9: Prayer service...
- October 10: Educational program...
- October 11: Art exhibition...
- October 12: Music performance...
- October 13: Sermon...
- October 14: Learning session...
- October 15: Sharing of information...

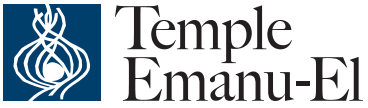
### 2024

- January: Community meeting...
- February: Educational program...
- March: Art exhibition...
- April: Music performance...
- May: Sermon...
- June: Learning session...
- July: Sharing of information...
- August: Community gathering...
- September: Prayer service...
- October: Memorial service...
- November: Educational program...
- December: Community meeting...

## THE ISRAEL FOOTPRINT

Temple provided multiple programs, art exhibitions, learning, music, sermons, performances and sharing of information over the past year. For a comprehensive timeline of events and response to the October 7 attacks, scan for the article in the 2023-2024 Impact Report, which is arriving in congregants' homes in September.





8500 Hillcrest Road | Dallas, Texas 75225  
214.706.0000 | tedallas.org

**The Window** (USPS #017-824) is published six times per year by Temple Emanu-El Congregation, 8500 Hillcrest Road, Dallas, TX 75225-4204. Periodicals Postage Paid at Dallas, Texas.

**POSTMASTER, send address changes to:**  
Temple Emanu-El Window  
8500 Hillcrest Road  
Dallas, Texas 75225-4204.

PERIODICALS  
Time Sensitive Material



COME  
into the  
Mishkan!